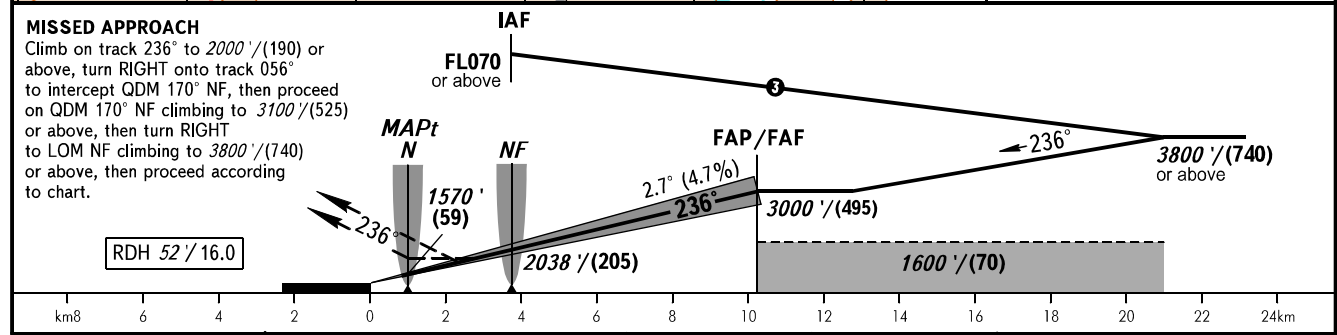
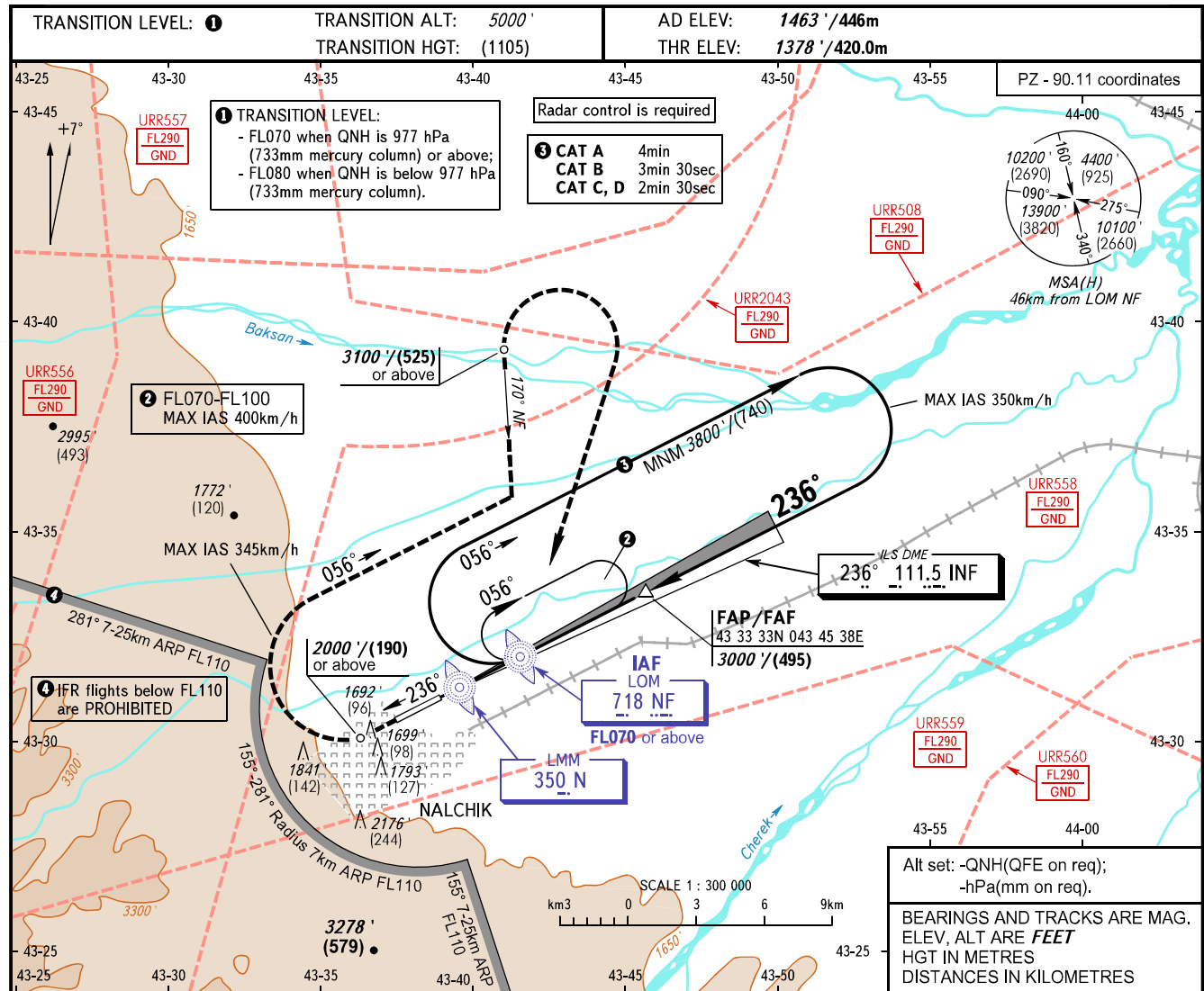


**INSTRUMENT
APPROACH
CHART - ICAO**

NALCHIK, RUSSIA
NALCHIK
ILS Y, LOC Y RWY 24

START **118.300**



OCA(H)		MNM climb gradient	A	B	C	D					
Straight-in Approach	ILS	2.5%	1814' (436')/(133)	1826' (448')/(137)	1834' (456')/(139)	1845' (467')/(143)					
		3.0%	1743' (365')/(111)	1752' (374')/(114)	1762' (384')/(117)	1772' (394')/(120)					
		4.0%	1670' (292')/(89)	1680' (302')/(92)	1690' (312')/(95)	1700' (322')/(98)					
		5.0%	1611' (233')/(71)	1621' (243')/(74)	1631' (253')/(77)	1641' (263')/(82)					
	LOC		1860' (490')/(150)	1860' (490')/(150)	1860' (490')/(150)	1880' (510')/(155)					
Circling			2390' (930')/(285)	2610' (1150')/(351)	3570' (2100')/(640)	4160' (2690')/(820)					
GROUND SPEED		km/h	150	180	210	240	270	300	330	360	390
RATE OF DESCENT		m/s	2.0	2.4	2.7	3.1	3.5	3.9	4.3	4.7	5.0
		ft/min	385	463	540	617	694	771	848	925	1002

WARNING:
1. MAPt at LMM N. Timing not authorized for defining MAPt.
2. Turn before passing MAPt is PROHIBITED.
3. When URR508, URR556, URR557, URR558, URR559, URR560, URR2043 are active, the chart is not AVBL.

CHANGE: Heading, OBST, OCA(H)