

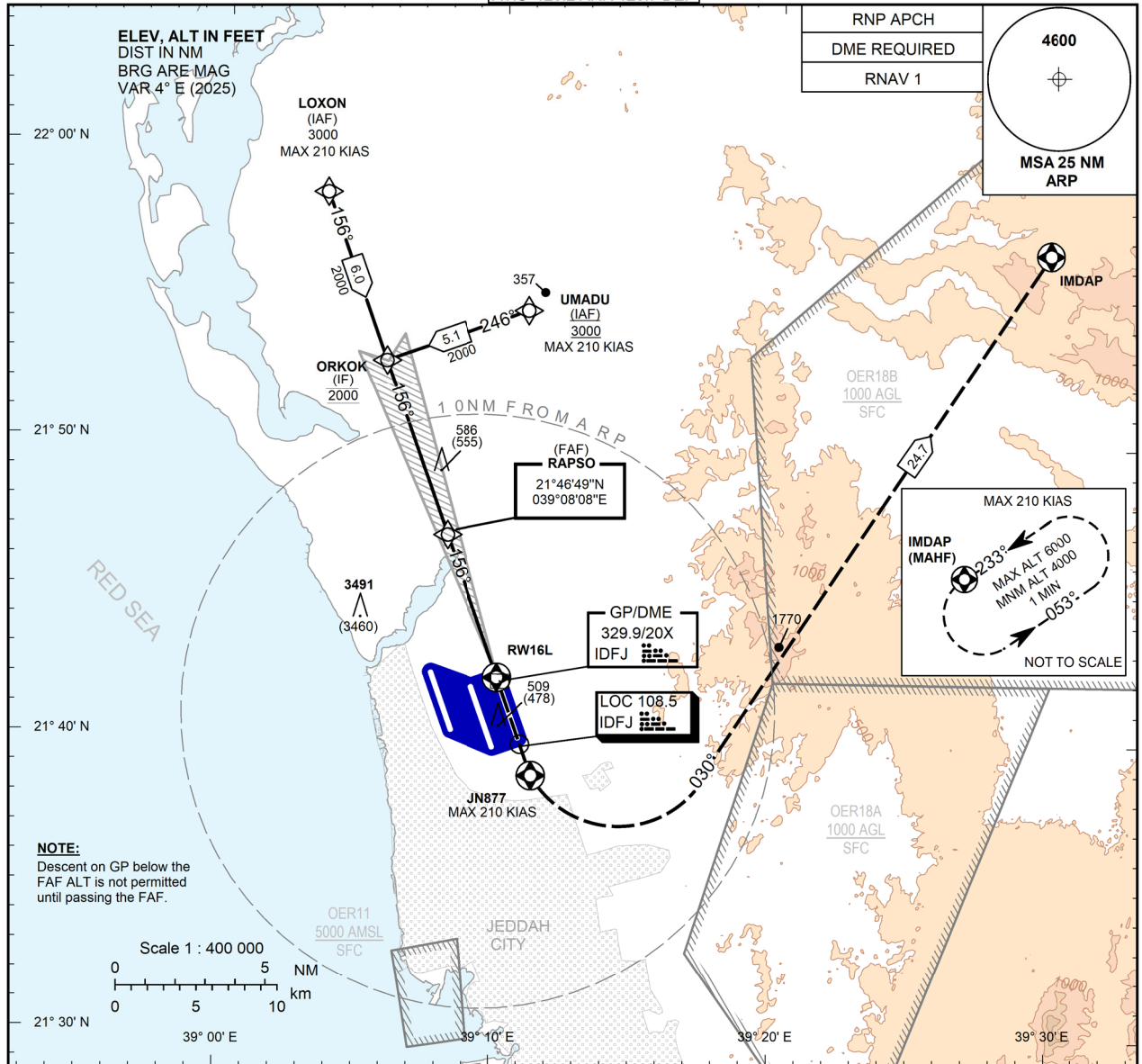
**INSTRUMENT
APPROACH
CHART - ICAO**

**AERODROME ELEV 50 FT
HEIGHTS RELATED TO
THR RWY 16L - ELEV 31 FT**

APP 123.8 124.0
TWR 118.2(W) 118.3(W)
118.5(E) 124.3(E)
UHF 345.6
ATIS 126.2 ARR 128.7 DEP

JEDDAH/King Abdulaziz Intl (OEJN)

ILS Y RWY 16L



**TRANSITION ALT 13000
TRANSITION LEVEL FL 150**

MISSED APPROACH:

Climb direct to **JN877**, turn left to intercept course 030° to **IMDAP** and join the **IMDAP** hold. Climb to **4000 FT**, (MAX 210 KIAS).

ILS RDH 52

**ORKOK
IF
2000**
11.5 DME IDFJ

**RAPSO
FAF
1700**
5.2 DME IDFJ

**2000
(1969)**

**1700
(1669)**

**1100
(1069)**

RW16L

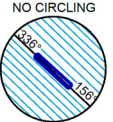
**THR ELEV 31
(THR RWY 16L)**

	ACFT CAT	A	B	C	D/DL
Straight-in Approach	CAT I *(MACG 5.0%)		240 (209)		
			550		
Circling	CAT I *(MACG 2.5%)		470 (439)		
			1300		
	OCA(H)		N/A		
	VIS(m)				

NOTE

NM to/from THR RWY 16L

Ground Speed	Knots	70	90	110	130	150	170	190
		min:s	4:21	3:23	2:46	2:21	2:02	1:48
FAF-THR 5.1 NM								
Rate of Descent	ft/min	370	480	580	690	800	900	1010
DME IDFJ NM		2	3	4	5			
ALT (HGT) 3.0° APCH		668 (637)	987 (956)	1305 (1274)	1624 (1593)			



- CIRCLING NOT AUTHORIZED
- RVR/VIS RELATED TO DA(H) = OCA(H)
*MACG: Missed approach climb gradient

CHANGE: New Chart

AMDT: Original, 26 DEC 24

ICAO PANS OPS