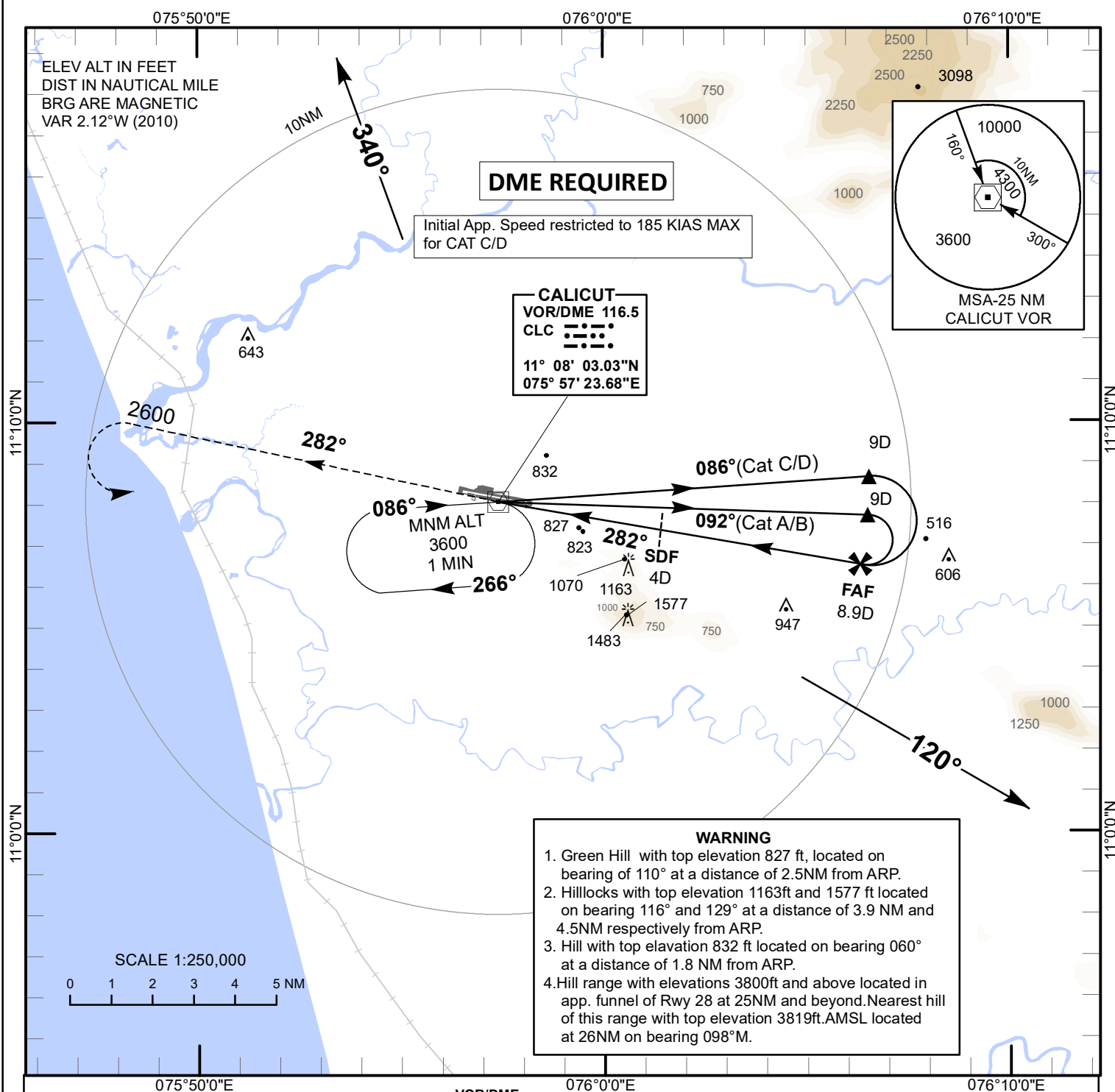


**INSTRUMENT
APPROACH
CHART****AERODROME ELEV 343 ft**
HEIGHT RELATED TO
THR RWY 28 ELEV 326 ft**APP 122.950 / 119.150**
TWR 123.350**CALICUT (VOCL)**
INDIA
VOR RWY 28

Transition Altitude 10000

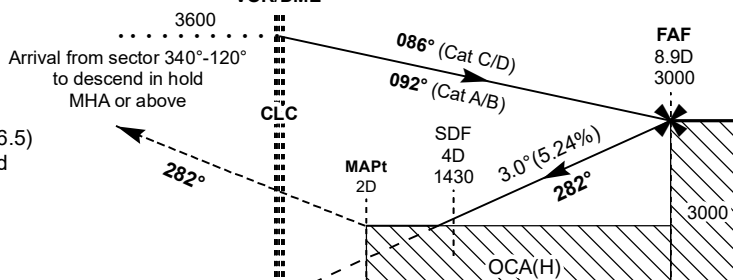
MISSED APPROACH

Climb straight to 2600 ft, then
climbing turn LEFT to VOR(CLC 116.5)
to join hold at 3600 ft or as instructed
by ATC.

THR ELEV 326

NAUTICAL MILES FROM THR RWY 28

VOR/DME



OCA(H)			Distance/Altitude information								
Acft Category	A/B	C/D	Distance (CLC-DME)	NM	8.9D(FAF)	8D	7D	6D	5D	4D(SDF)	
STRAIGHT-IN	1380(1054)	1380(1054)	Altitude	Ft	3000	2700	2390	2070	1750	1430	
DRG.NO. AAI/62-IALC/23/14/02/2024			Rate of Descent/Ground speed information								
			Ground Speed		Kt	80	100	120	140	160	180
			Rate of Descent (5.24%)		Ft/MIN	425	530	635	745	850	955

DRG.NO. AAI/62-IALC/23/14/02/2024