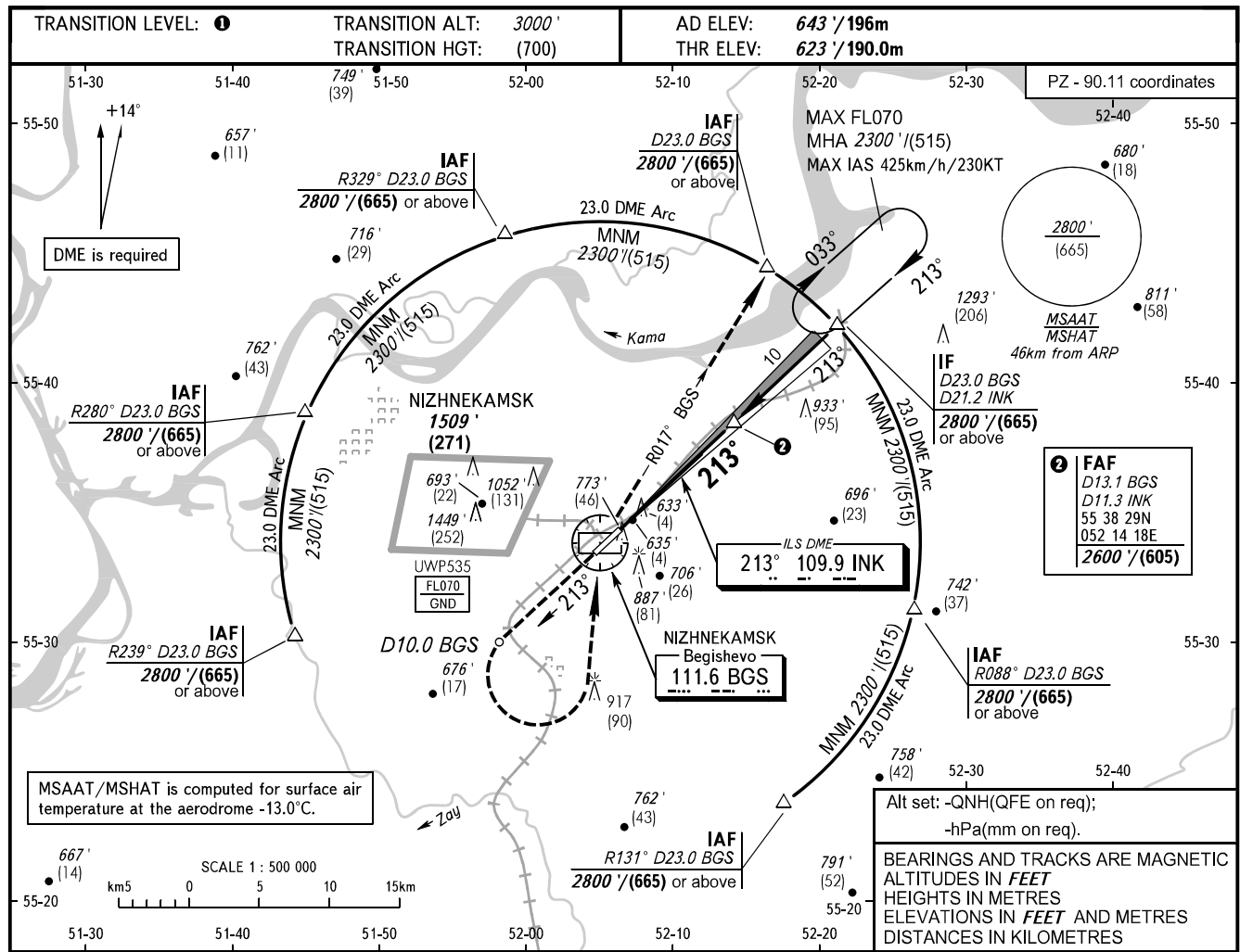


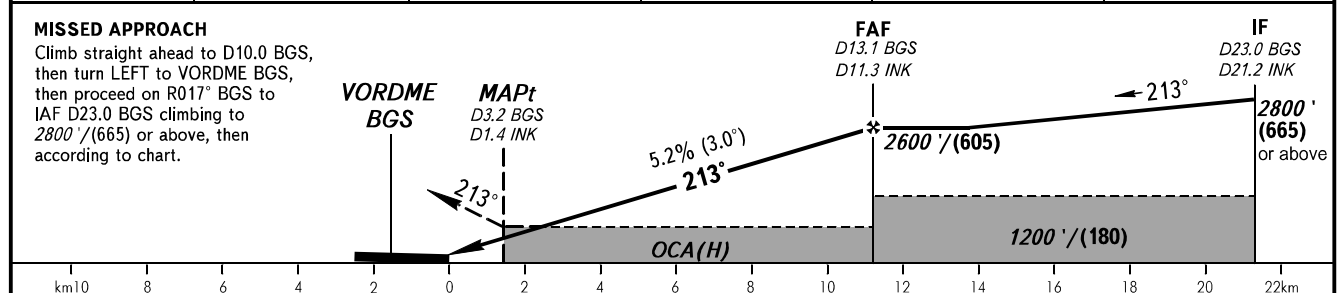
**INSTRUMENT
APPROACH
CHART - ICAO**

**NIZHNEKAMSK, RUSSIA
BEGISHEVO
LOC Y RWY 21**

RADAR	127.900
TOWER	127.900
START	121.200



DME INK	2.0	4.0	6.0	8.0	10.0
DME BGS	3.8	5.8	7.8	9.8	11.8
ALTITUDE	1020' / 310	1360' / 415	1700' / 520	2040' / 625	2380' / 725
HEIGHT	(400') / (120)	(740') / (225)	(1080') / (330)	(1420') / (435)	(1760') / (535)



OCA(H)		A	B	C	D							
Straight-in	Approach	910' (290') 280 (90)	910' (290') 280 (90)	910' (290') 280 (90)	910' (290') 280 (90)							
	Circling	1070' (430') 330 (130)	1190' (540') 365 (165)	1290' (640') 395 (195)	1340' (690') 410 (210)							
GROUND SPEED	km/h	150	180	210	240	270	300	330	360	390	420	450
RATE OF DESCENT	kt	81	97	113	130	146	162	178	194	211	227	243
	m/s	2.2	2.6	3.0	3.5	3.9	4.3	4.8	5.2	5.6	6.1	6.5
	ft/min	427	512	597	682	768	853	938	1024	1109	1194	1280

1 TRANSITION LEVEL:
 - FL040 when QNH is 1013 hPa (760mm mercury column) or above;
 - FL050 when QNH is 977 hPa (733mm mercury column) or above, but less than 1013 hPa (760mm mercury column);
 - FL060 when QNH is less than 977 hPa (733mm mercury column).

WARNING:
 1. MAPt at D3.2 BGS, D1.4 INK. Timing not authorized for defining MAPt.
 2. Zero range of DME INK is indicated at RWY 21 THR.
 3. Visual manoeuvring in sector 228°-018° is PROHIBITED.