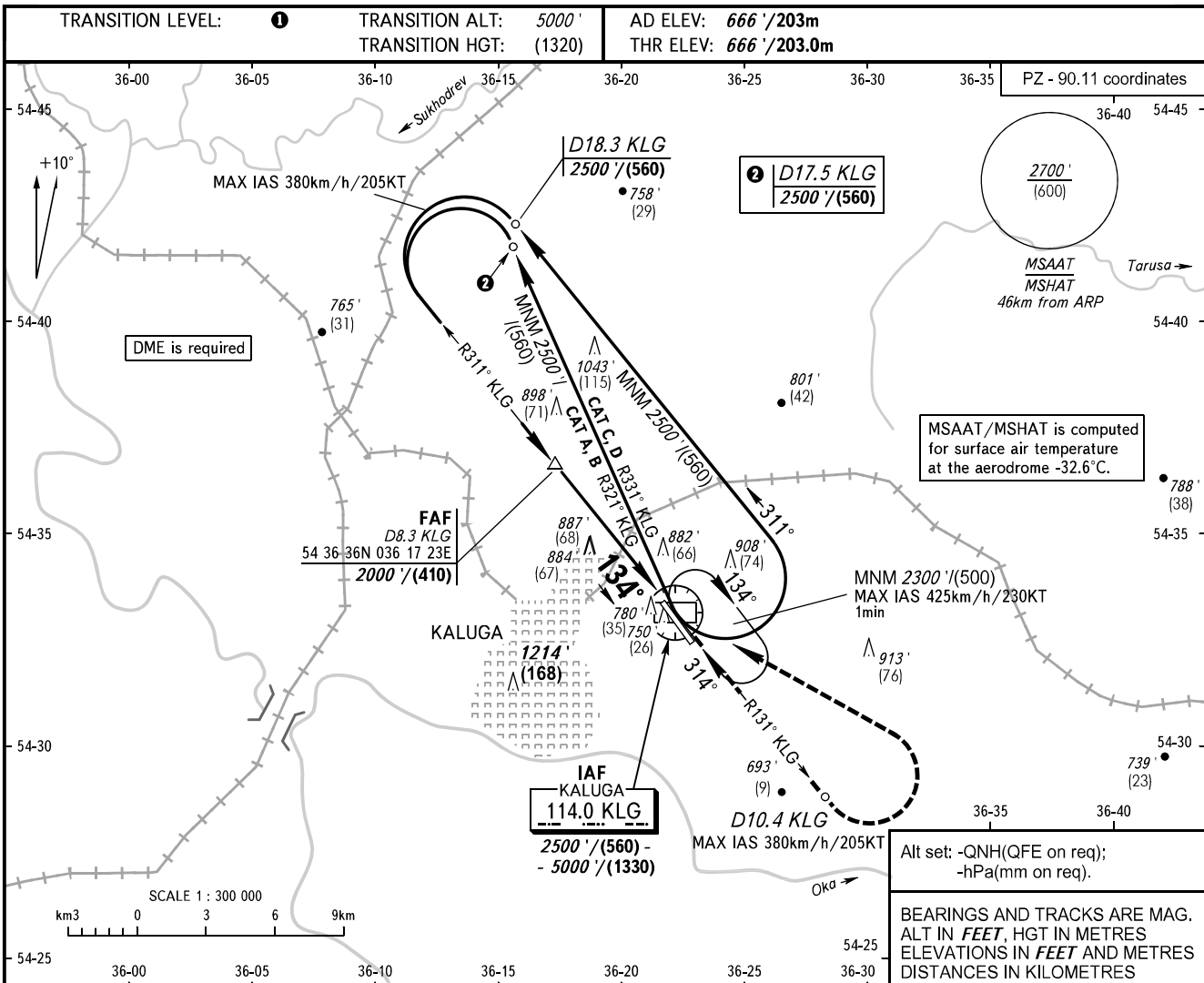


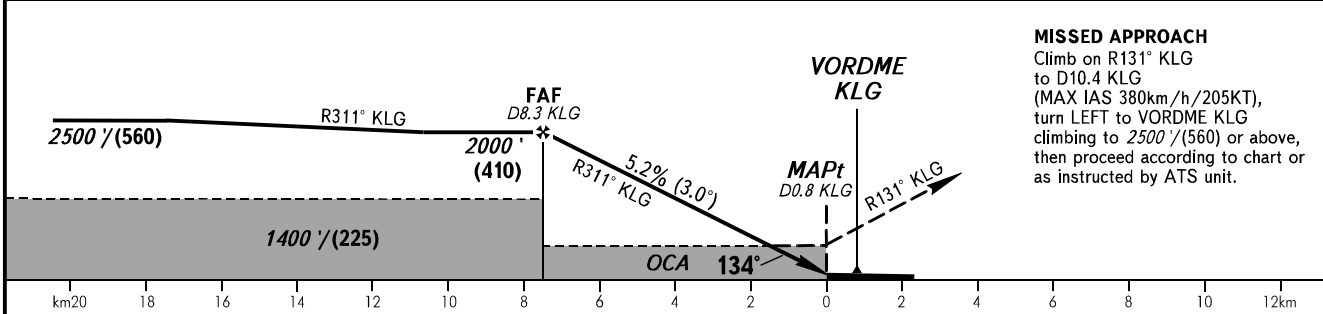
**INSTRUMENT
APPROACH
CHART - ICAO**

KALUGA TOWER 120.300

**KALUGA, RUSSIA
GRABTSEVO
VOR RWY 13**



DME KLG	8.0	6.0	4.0
ALTITUDE/HEIGHT	1960'/(595)	1620'/(290)	1280'/(190)



OCA(H)		A	B	C	D
Straight-in Approach		1130' (470') (145)	1130' (470') (145)	1130' (470') (145)	1130' (470') (145)
Circling		1180' (520') (160)	1210' (550') (170)	1310' (650') (200)	1360' (700') (220)

1 TRANSITION LEVEL:
- FL060 when QNH is 1013 hPa (760mm mercury column) or above;
- FL070 when QNH is 977 hPa (733mm mercury column) or above,
but less than 1013 hPa (760mm mercury column);
- FL080 when QNH is less than 977 hPa (733mm mercury column).

WARNING:
1. Visual manoeuvring west of AD is PROHIBITED.
2. Final approach track is offset by 3° from RCL.
3. MAPt at D0.8 KLG. Timing not authorized for defining MAPt.

GROUND SPEED	km/h	150	180	210	240	270	300	330	360	390
	kt	81	97	113	130	146	162	178	194	211
RATE OF DESCENT	m/s	2.2	2.6	3.0	3.5	3.9	4.3	4.8	5.2	5.6
	ft/min	427	512	597	682	768	853	938	1024	1109

CHANGE: New chart