

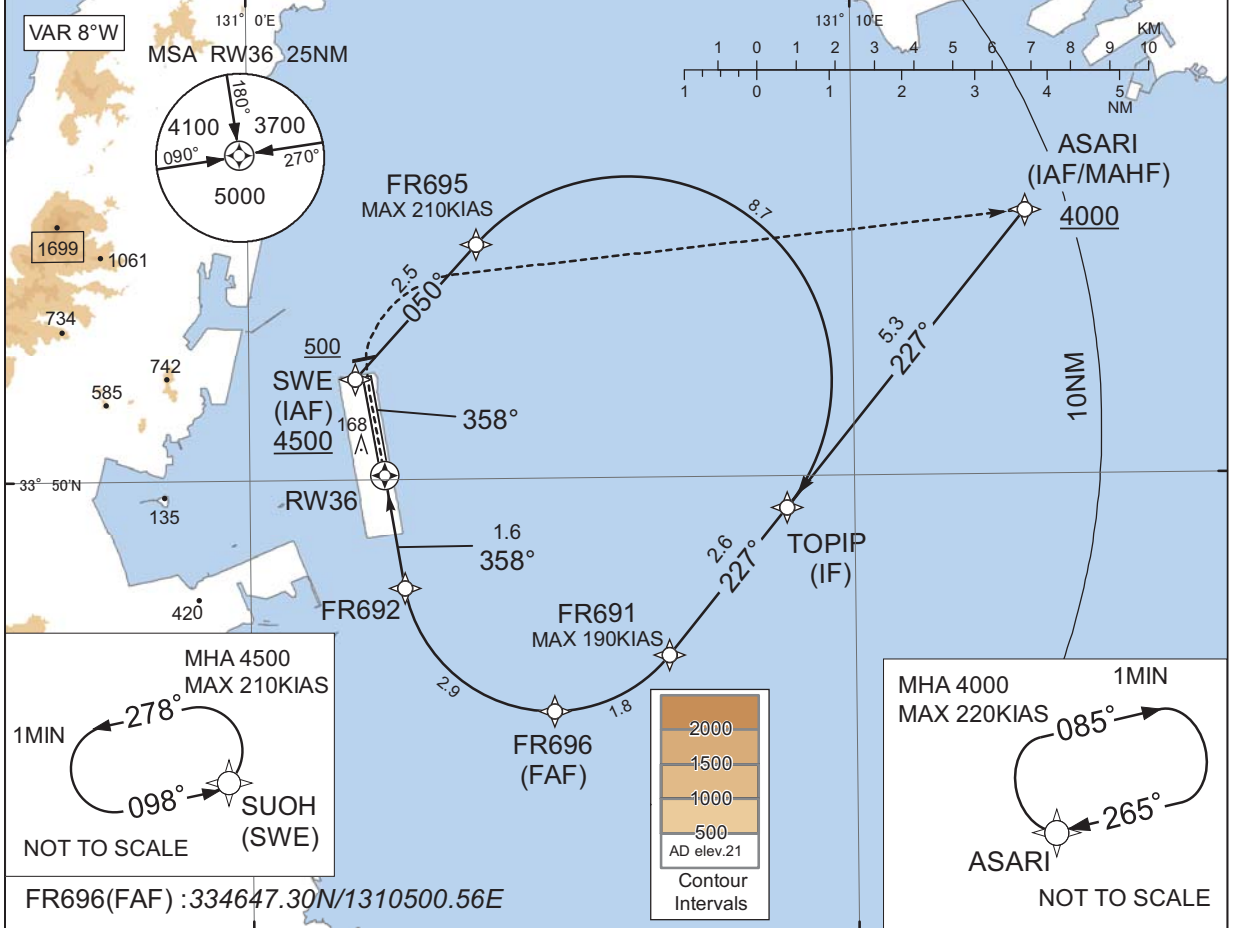
INSTRUMENT APPROACH CHART

RJFR / KITAKYUSHU

RNP RWY36(AR)

TSUIKI APP 119.225 - 315.9	RNP AR RF required.	KITAKYUSHU TOWER 118.85 - 126.2	1315 - 2245(UTC) KITAKYUSHU RADIO 118.85 AFIS provided by Fukuoka Airport Office	RADAR AVBL CALL TSUIKI APP
-------------------------------	------------------------	------------------------------------	--	----------------------------------

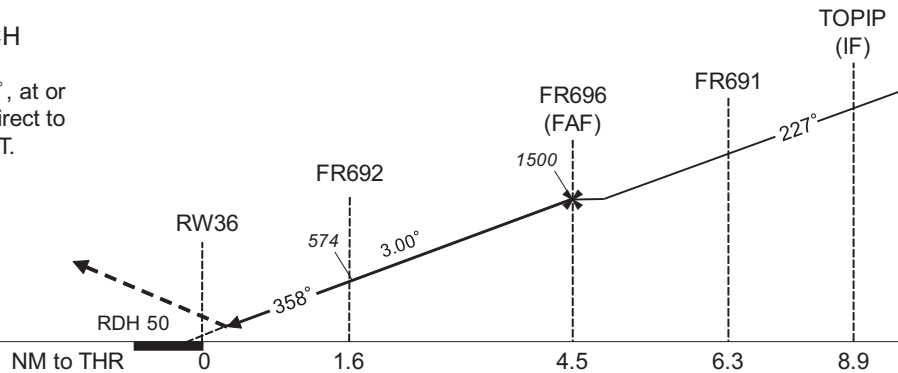
For uncompensated Baro-VNAV systems, procedure not authorized below -5°C / above 45°C



FR696(FAF) : 334647.30N/1310500.56E

MISSED APPROACH

From RW36 on track 358°, at or above 500FT turn right, direct to ASARI and hold at 4000FT. Contact TSUIKI APP.



Missed APCH climb gradient MNM 5.0%

MINIMA	THR elev. 23	AD elev. 21
CAT	RNP 0.30	
	DA(H)	CMV
A	-	-
B	-	-
C	319(296)	1200
D	329(306)	1600

**Authorization Required**

MINIMA with Missed APCH climb gradient of 2.5% are not established.

CHANGE : PROC course. TOPIP, FR695, FR696 established. FR690 abolished. FR690 abolished. NM to THR. MINIMA. Speed at FR691. HLDG pattern for SUOH(SWE), ASARI established.

INSTRUMENT APPROACH CHART

RJFR / KITAKYUSHU

RNP RWY36(AR)

CHANGE : TOPIP, FR695, FR696 established. FR690 abolished. PROC course. VAR. ALT restriction. Hold at ASARI, SWE, Waypoint Coordinates established.

Coding Table

Serial Number	Path Descriptor	Waypoint Identifier	Fly Over	Course °M(°T)	Magnetic Variation	Distance (NM)	Turn Direction	Altitude (FT)	Speed (KIAS)	VPA/ RDH (°/FT)	RNP Value
001	IF	ASARI	-	-	-8.1	-	-	+4000	-	-	-
002	TF	TOPIP	-	227 (219.1)	-8.1	5.3	-	-	-	-	0.3
001	IF	SWE	-	-	-8.1	-	-	+4500	-	-	-
002	TF	FR695	-	050 (042.2)	-8.1	2.5	-	-	-210	-	0.3
003	RF Center: FRRF5 r=2.81NM	TOPIP	-	-	-8.1	8.7	R	-	-	-	0.3
001	IF	TOPIP	-	-	-8.1	-	-	-	-	-	-
002	TF	FR691	-	227 (219.0)	-8.1	2.6	-	-	-190	-	0.3
003	RF Center: FRRF2 r=2.06NM	FR696	-	-	-8.1	1.8	R	1500	-	-3.00	0.3
004	RF Center: FRRF2 r=2.06NM	FR692	-	-	-8.1	2.9	R	574	-	-3.00	0.3
005	TF	RW36	Y	358 (350.4)	-8.1	1.6	-	73	-	-3.00/50	0.3
006	FA	-	-	358 (350.4)	-8.1	-	-	+500	-	-	1.0
007	DF	ASARI	-	-	-8.1	-	R	4000	-	-	1.0

Path	Waypoint Identifier	Inbound Course °M(°T)	Magnetic Variation	Outbound Time (MIN)	Turn Direction	Minimum Altitude (FT)	Maximum Altitude (FT)	Speed (KIAS)	RNP Value
Hold	ASARI	265 (256.4)	-8.1	1.0 (-14000)	R	4000	FL140	-220 (-14000)	1.0
Hold	SWE	098 (090.0)	-8.1	1.0 (-14000)	L	4500	FL140	-210 (-14000)	1.0

Waypoint Coordinates

Waypoint Identifier	Coordinates	RF Arc Center Identifier	Coordinates
ASARI	335338.98N / 1311252.32E	FRRF5	335120.78N / 1310616.38E
SUOH(SWE)	335123.82N / 1310145.84E	FRRF2	334851.32N / 1310459.78E
FR695	335314.57N / 1310346.97E		
TOPIP	334934.23N / 1310853.21E		
FR691	334733.05N / 1310655.02E		
FR696	334647.30N / 1310500.56E		
FR692	334830.46N / 1310233.32E		
RW36	335004.08N / 1310214.17E		