

**PANS-OPS
 INSTRUMENT APPROACH CHART**

AD ELEV 140

**ILS or LOC Y RWY 27
 LAAGE (ETNL)**

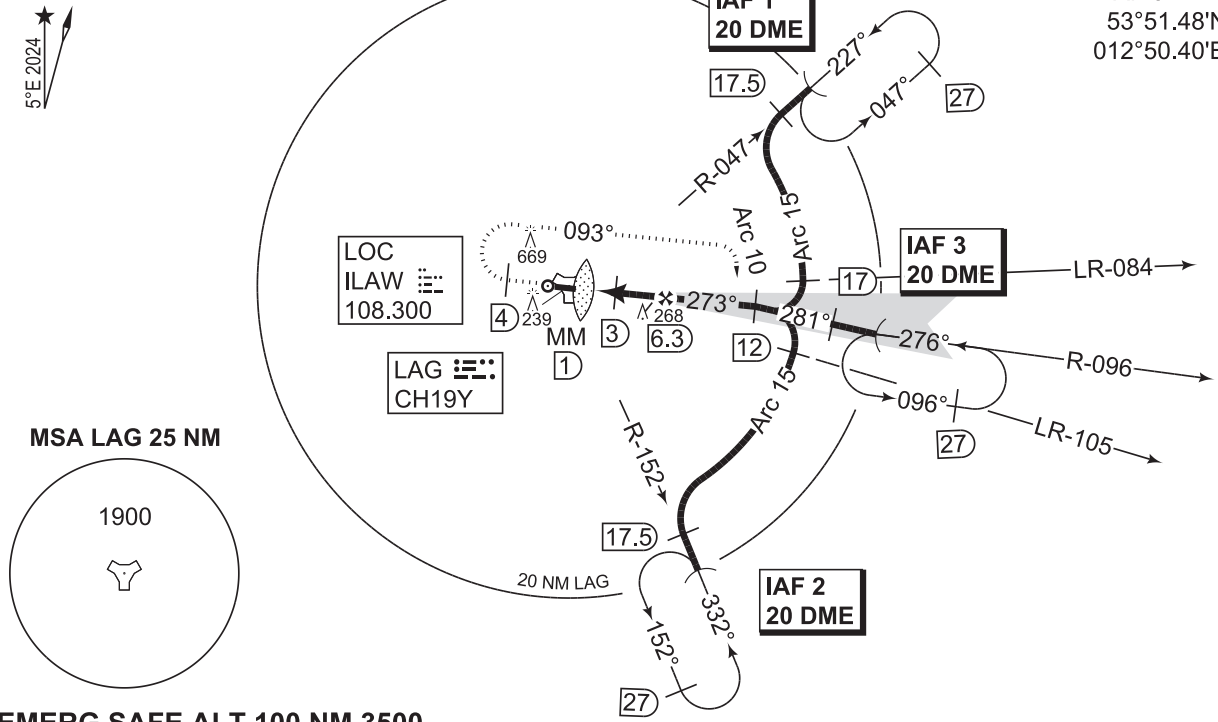
BREMEN RADAR 259.825 124.175	LAAGE RADAR 376.400 133.105	LAAGE TOWER 336.400 118.430	LAAGE ATIS 134.605
TACAN/LOCALIZER LAG CH19Y/ILAW 108.300	APP COURSE 273°	GS INTCP ALT 2000	GS 3.0° / 5.2%
		DA See CAT	TDZE 135
		ALS-LENGTH 900 M	LDA 8268

NOTE:

- a) TIMING NOT AUTHORIZED FOR DEFINING THE MAPT.
- b) NON STANDARD PROCEDURE (DEAD RECKONING INTERCEPTS LOC WITH 8.0° ONLY).
- c) FOR MILITARY USE ONLY.
- d) PAPI AND ILS GLIDEPATH DO NOT COINCIDE.
- e) TACAN REQUIRED.
- f) CIRCLING NOT AUTHORIZED NORTH OF RWY 09/27.
- g) HPMAs

IFR PROFILES WITHIN AIRSPACE CLASS "E" WATCH OUT FOR VFR TRAFFIC UNKNOWN TO ATC.

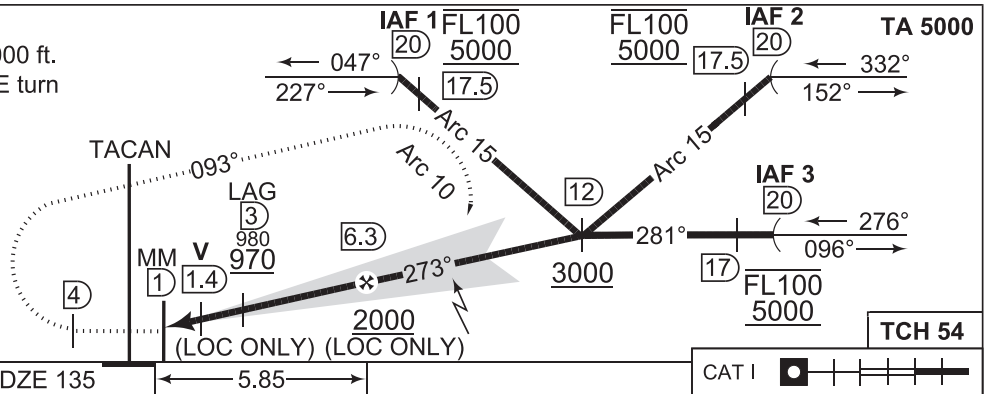
- IAF 1
54°07.43'N
012°43.97'E
- IAF 2
53°36.80'N
012°30.31'E
- IAF 3
53°51.48'N
012°50.40'E



EMERG SAFE ALT 100 NM 3500

MISSED APPROACH

Climb straight ahead to 2000 ft.
 When passing LAG/4 DME turn right to track 093°.
 Intercept LAG Arc 10 and return to final.



CHANGE: VAR. LR (376/23)

CATEGORY	A	B	C	D	E
ILS Y 27	335 - 0.8 200 (200-0.8/1.6)				NOT AUTHORIZED
LOC Y 27	480 - 0.8 345 (400-0.8/1.6)	480 - 1.2 345 (400-1.2/1.6)		480 - 1.2 345 (400-1.2/2.0)	NOT AUTHORIZED
f CIRCLING	550 - 1.9 410 (500-1.9)	640 - 2.3 500 (500-2.3)	1180 - 4.9 1040 (1100-4.9)		1070 - 4.3 930 (1000-4.3) g

ILS or LOC Y RWY 27

53°55.09'N
 012°16.76'E

LAAGE (ETNL)