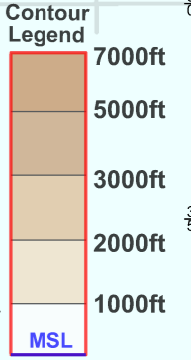
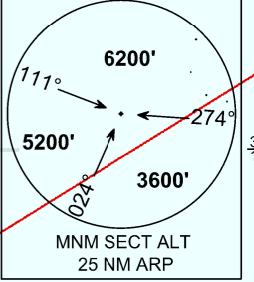
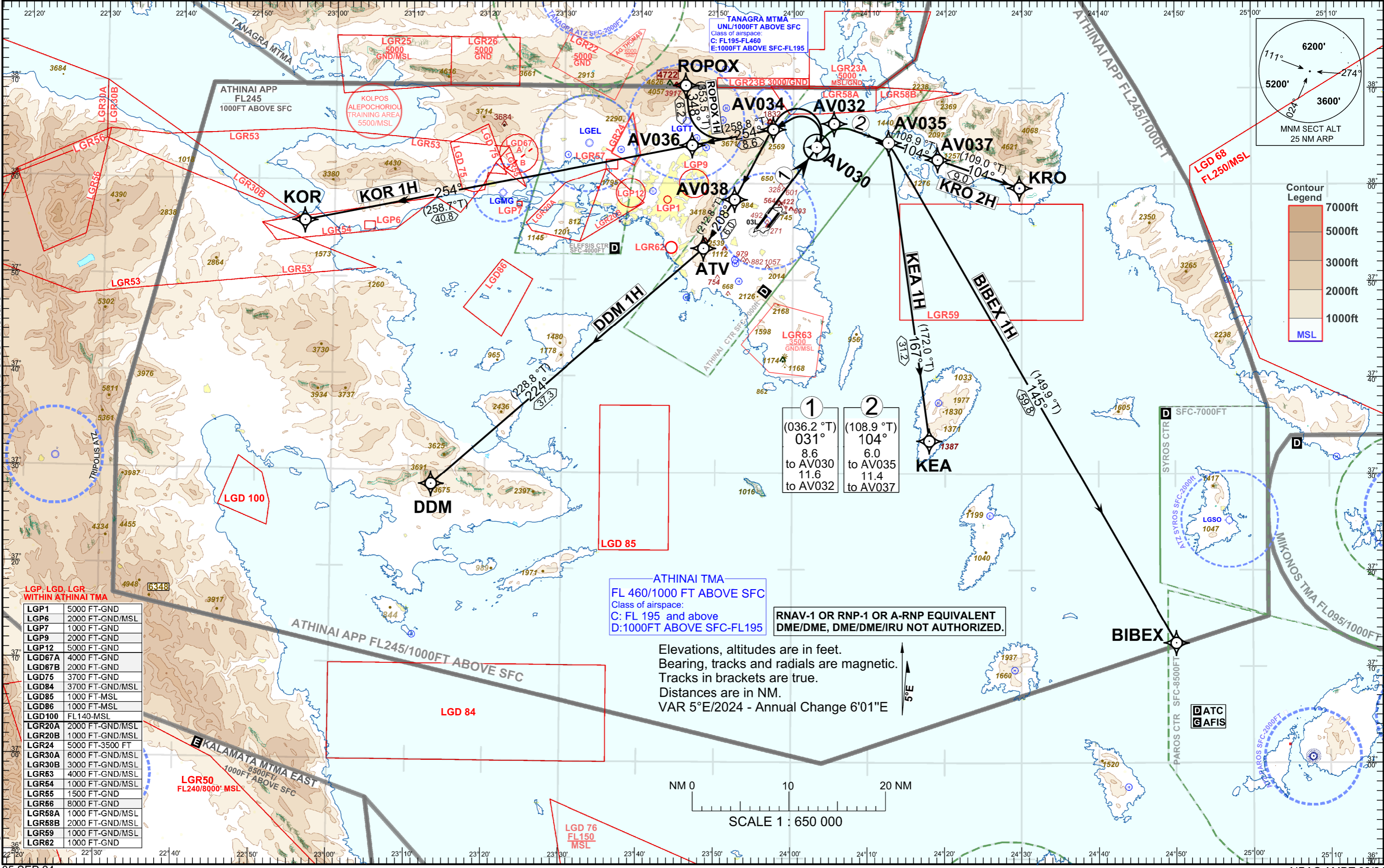


TRANSITION ALTITUDE 9000 ft	ATIS 136.125	TOWER WEST 136.275	ATHINAI DEPARTURE 128.950
		TOWER EAST 118.625	

BIBEX 1H, DDM 1H, KEA 1H, KOR 1H, KOR 2H, ROPOX 1H



1	2
(036.2° T)	(108.9° T)
031°	104°
8.6 to AV030	6.0 to AV035
11.6 to AV032	11.4 to AV037

ATHINAI TMA  
FL 460/1000 FT ABOVE SFC  
Class of airspace:  
C: FL 195 and above  
D: 1000FT ABOVE SFC-FL195

RNAV-1 OR RNP-1 OR A-RNP EQUIVALENT  
DME/DME, DME/DME/IRU NOT AUTHORIZED.

Elevations, altitudes are in feet.  
Bearing, tracks and radials are magnetic.  
Tracks in brackets are true.  
Distances are in NM.  
VAR 5°E/2024 - Annual Change 6'01"E



SCALE 1 : 650 000

LGP, LGD, LGR WITHIN ATHINAI TMA

LGP1	5000 FT-GND
LGP6	2000 FT-GND/MSL
LGP7	1000 FT-GND
LGP9	2000 FT-GND
LGP12	5000 FT-GND
LGD67A	4000 FT-GND
LGD67B	2000 FT-GND
LGD75	3700 FT-GND
LGD84	3700 FT-GND/MSL
LGD85	1000 FT-MSL
LGD86	1000 FT-MSL
LGD100	FL140-MSL
LGR20A	2000 FT-GND/MSL
LGR20B	1000 FT-GND/MSL
LGR24	5000 FT-3500 FT
LGR30A	6000 FT-GND/MSL
LGR30B	3000 FT-GND/MSL
LGR63	4000 FT-GND/MSL
LGR64	1000 FT-GND/MSL
LGR65	1500 FT-GND
LGR66	8000 FT-GND
LGR68A	1000 FT-GND/MSL
LGR68B	2000 FT-GND/MSL
LGR69	1000 FT-GND/MSL
LGR62	1000 FT-GND

**SID RWY03L**

**BIBEX1H**

Sequence Number	Waypoint Identifier	Coordinates	Path Terminator	Fly Over	Distance (NM)	Course °M (°T)	Turn Direction	Altitude (FT/FL)	Speed Limit (kt)	Navigation Specification	RNP
010	AV032	N 38°06'18.2976" E 024°05'18.7596"	CF	-	11.6	031 (036.0)	-	-	235-	RNAV 1	1
020	AV035	N 38°04'21.1797" E 024°12'30.1250"	TF	-	6.0	104 (108.9)	-	-	-	RNAV 1	1
030	BIBEX	N 37°12'29.0000" E 024°50'04.0000"	TF	-	59.8	145 (149.9)	-	-	-	RNAV 1	1

**Climb on course 031° to AV032; to AV035; to BIBEX.**

Climb with MIN PDG 3,8%(235 ft/NM) until passing 700 due to obstacles.

MAX IAS 235 KT until inbound AV035.

RMK: This SID should be used for destination PAROS (LGPA).

**DDM1H**

Sequence Number	Waypoint Identifier	Coordinates	Path Terminator	Fly Over	Distance (NM)	Course °M (°T)	Turn Direction	Altitude (FT/FL)	Speed Limit (kt)	Navigation Specification	RNP
010	AV030	N 38°03'53.0872" E 024°03'04.2608"	CF	Y	8.6	031 (036.2)	-	-	235-	RNAV 1	1
020	AV038	N 37°58'22.4311" E 023°52'22.1948"	DF	-	-	-	L	-	-	RNAV 1	1
030	ATV	N 37°53'19.2400" E 023°48'16.1900"	TF	-	6.0	208 (212.7)	-	-	-	RNAV 1	1
040	DDM	N 37°28'39.6100" E 023°13'01.8100"	TF	-	37.3	224 (228.8)	-	-	-	RNAV 1	1

**Climb on course 031° to AV030; LT, direct to AV038; to ATV; to DDM.**

Climb with MIN PDG 4.1%(250 ft/NM) until 3300 due to obstacles.

MAX IAS 235 KT until inbound AV038.

(Sample: AV030 fly-over waypoint)

**KEA1H**

Sequence Number	Waypoint Identifier	Coordinates	Path Terminator	Fly Over	Distance (NM)	Course °M (°T)	Turn Direction	Altitude (FT/FL)	Speed Limit (kt)	Navigation Specification	RNP
010	AV032	N 38°06'18.2976" E 024°05'18.7596"	CF	-	11.6	031 (036.2)	-	-	235-	RNAV 1	1
020	AV035	N 38°04'21.1797" E 024°12'30.1250"	TF	-	6.0	104 (108.9)	-	-	-	RNAV 1	1
030	KEA	N 37°33'25.7900" E 024°17'55.3200"	TF	-	31.2	167 (172.1)	-	-FL240	-	RNAV 1	1

**Climb on course 031° to AV032; to AV035; to KEA. Cross KEA at or below FL240.**

Climb with MIN PDG 3.8% (235 ft/NM) until passing 700 due to obstacles.

MAX IAS 235 KT until inbound AV035

**KOR1H**

Sequence Number	Waypoint Identifier	Coordinates	Path Terminator	Fly Over	Distance (NM)	Course °M (°T)	Turn Direction	Altitude (FT/FL)	Speed Limit (kt)	Navigation Specification	RNP
010	AV030	N 38°03'53.0872" E 024°03'04.2608"	CF	Y	8.6	031 (036.2)	-	-	235-	RNAV 1	1
020	AV034	N 38°05'41.4564" E 023°57'22.4564"	DF	-	-	-	L	+6000	-	RNAV 1	1
030	AV036	N 38°04'00.9906" E 023°46'43.6860"	TF	-	8.6	254 (258.8)	-	-	-	RNAV 1	1
040	KOR	N 37°55'49.4800" E 022°56'09.2400"	TF	-	40.8	254 (258.7)	-	-	-	RNAV 1	1

**Climb on course 031° to AV030; LT, direct to AV034; to AV036; to KOR.**

Climb with MIN PDG 4.7% (285 ft/NM) until 4600 due to obstacles.

Climb with MIN PDG 5.8% (355 ft/NM) to cross AV034 at or above 6000 due to Dekelia LGTT ATZ.

MAX IAS 235 KT until in bound AV034.

**KRO2H**

Sequence Number	Waypoint Identifier	Coordinates	Path Terminator	Fly Over	Distance (NM)	Course °M (°T)	Turn Direction	Altitude (FT/FL)	Speed Limit (kt)	Navigation Specification	RNP
010	AV032	N 38°06'18.2976" E 024°05'18.7596"	CF	-	11.6	031 (036.2)	-	-	235-	RNAV 1	1
020	AV037	N 38°02'35.8536" E 024°18'55.9680"	TF	-	11.4	104 (108.9)	-	+9000	-	RNAV 1	1
030	KRO	N 37°59'38.9000" E 024°29'41.6700"	TF	-	9.0	104 (109.1)	-	-	-	RNAV 1	1

**Climb on course 031° to AV032; to AV037; to KRO.**

Climb with MIN PDG 3.8% (235 ft/NM) until passing 700 due to obstacles.

Climb with MIN PDG 6.4% (390 ft/NM) to cross AV037 at or above 9000.

MAX IAS 235 KT until inbound AV037.

**ROPOX1H**

Sequence Number	Waypoint Identifier	Coordinates	Path Terminator	Fly Over	Distance (NM)	Course °M (°T)	Turn Direction	Altitude (FT/FL)	Speed Limit (kt)	Navigation Specification	RNP
010	AV030	N 38°03'53.0872" E 024°03'04.2608"	CF	Y	8.6	031 (036.2)	-	-	235-	RNAV 1	1
020	AV034	N 38°05'41.4564" E 023°57'22.4564"	DF	-	-	-	L	+6000	-	RNAV 1	1
030	AV036	N 38°04'00.9906" E 023°46'43.6860"	TF	-	8.6	254 (258.8)	-	-	-	RNAV 1	1
040	ROPOX	N 38°10'12.0000" E 023°45'50.0000"	TF	-	6.2	348 (353.5)	-	-	-	RNAV 1	1

**Climb on course 031° to AV030; LT, direct to AV034; to AV036; to ROPOX.**

Climb with MIN PDG 4.7% (285 ft/NM) until 4600 due to obstacles.

Climb with MIN PDG 5.8% (355ft/NM) to cross AV034 at or above 6000 due to Kotroni LGKN ATZ.

MAX IAS 235 KT until inbound AV034.