

STANDARD DEPARTURE CHART -INSTRUMENT

RJKA / AMAMI

SID

CHANGE : PROC renamed(KASARI REVERSAL THREE DEPARTURE). Note added. POMAS FOUR DEPARTURE abolished.

KASARI REVERSAL THREE DEPARTURE

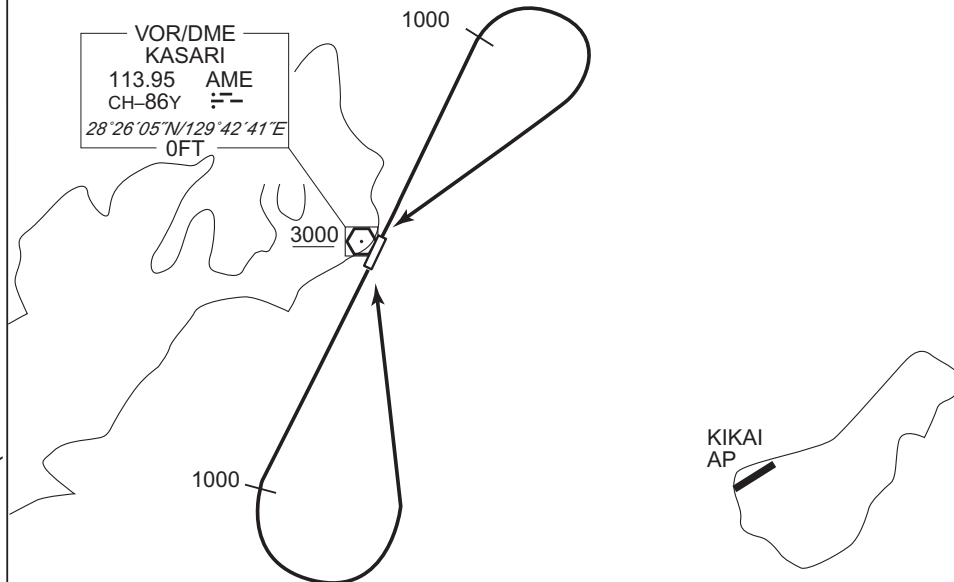
RWY03 : Climb RWY HDG to 1000FT,turn right,...

RWY21 : Climb RWY HDG to 1000FT,turn left,...

...direct to AME VOR/DME. Cross AME VOR/DME at or above 3000FT.

NOTE RWY03 : 3.5% climb gradient required up to 1000FT.

OBST ALT 197FT located at 1.1NM 015° FM end of RWY03.



INTENTIONALLY LEFT BLANK