

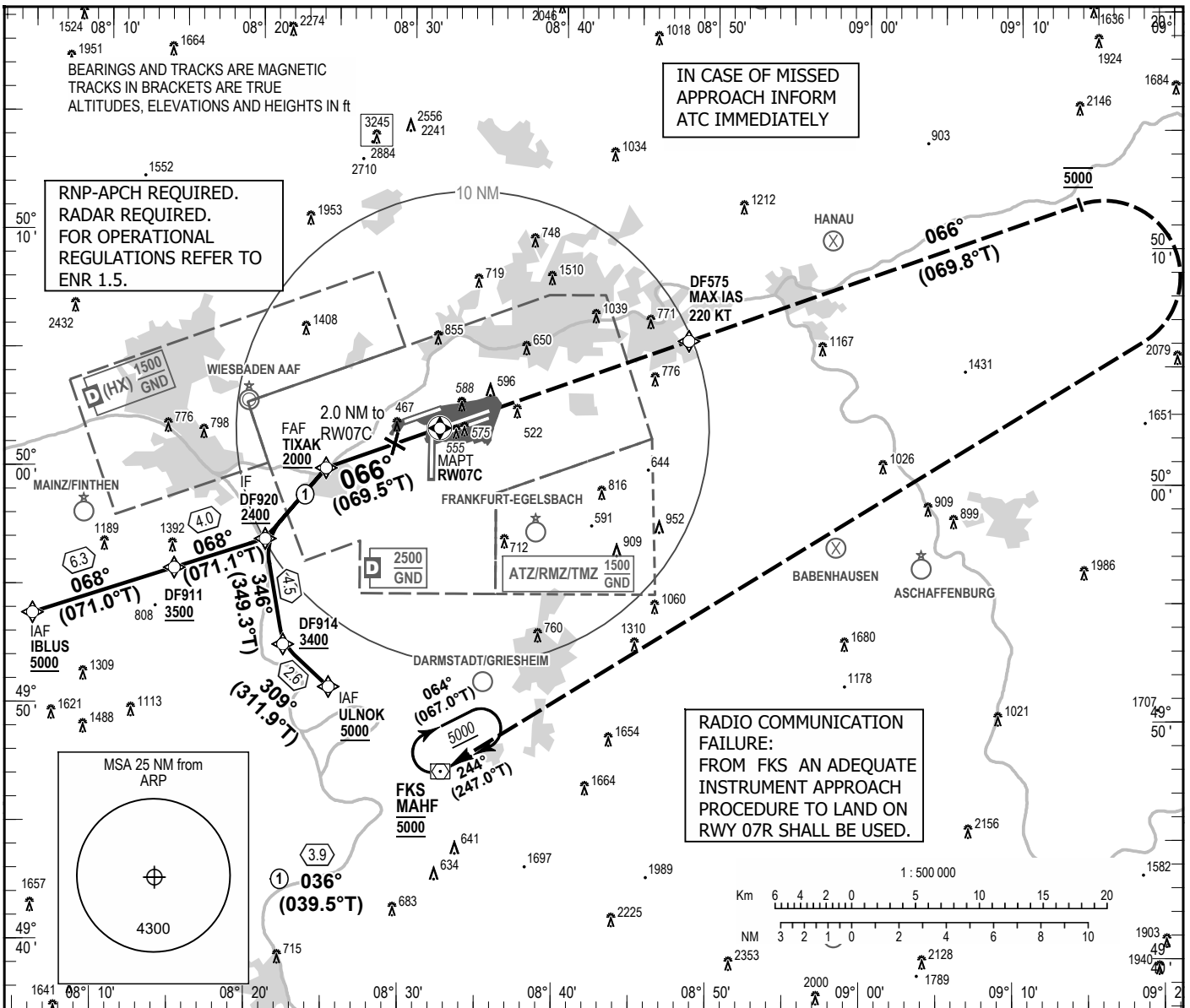
INSTRUMENT
APPROACH
CHART - ICAO

VAR 3° E

ELEV 363
OCH RELATED TO
THR 07C ELEV 328

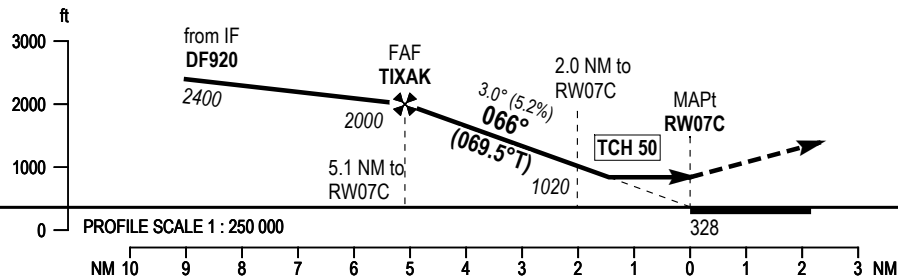
FRANKFURT ATIS	118.030	FRANKFURT TOWER	119.905
LANGEN RADAR	120.805	FRANKFURT GROUND	121.805
LANGEN RADAR	125.355	FRANKFURT APRON	121.755
FRANKFURT ARRIVAL	127.280	FRANKFURT APRON	121.855
FRANKFURT TOWER	118.780	FRANKFURT APRON	121.955

FRANKFURT MAIN
RNP X
RWY 07C



MISSED APPROACH PROCEDURE

Direct to DF575; climb on course 066°, at 5000 turn right, max. speed 220 kts; direct to FKS at 5000, max. speed 250 kts.



OCA (OCH)	A	B	C	D
LNAV	780 (460)	820 (490)	820 (490)	840 (510)

DIST THR / RWY07C	5	4	3	2
ALTITUDE	1970	1660	1340	1020

GS	kt	80	100	120	140	160	180
TIXAK - RWY07C (5.1 NM)	MIN:SEC	3:49	3:03	2:33	2:11	1:55	1:42
Rate of descent (5.2%)	ft/MIN	420	530	640	740	850	960

Correction: Callsign.