

STANDARD ARRIVAL CHART -INSTRUMENT

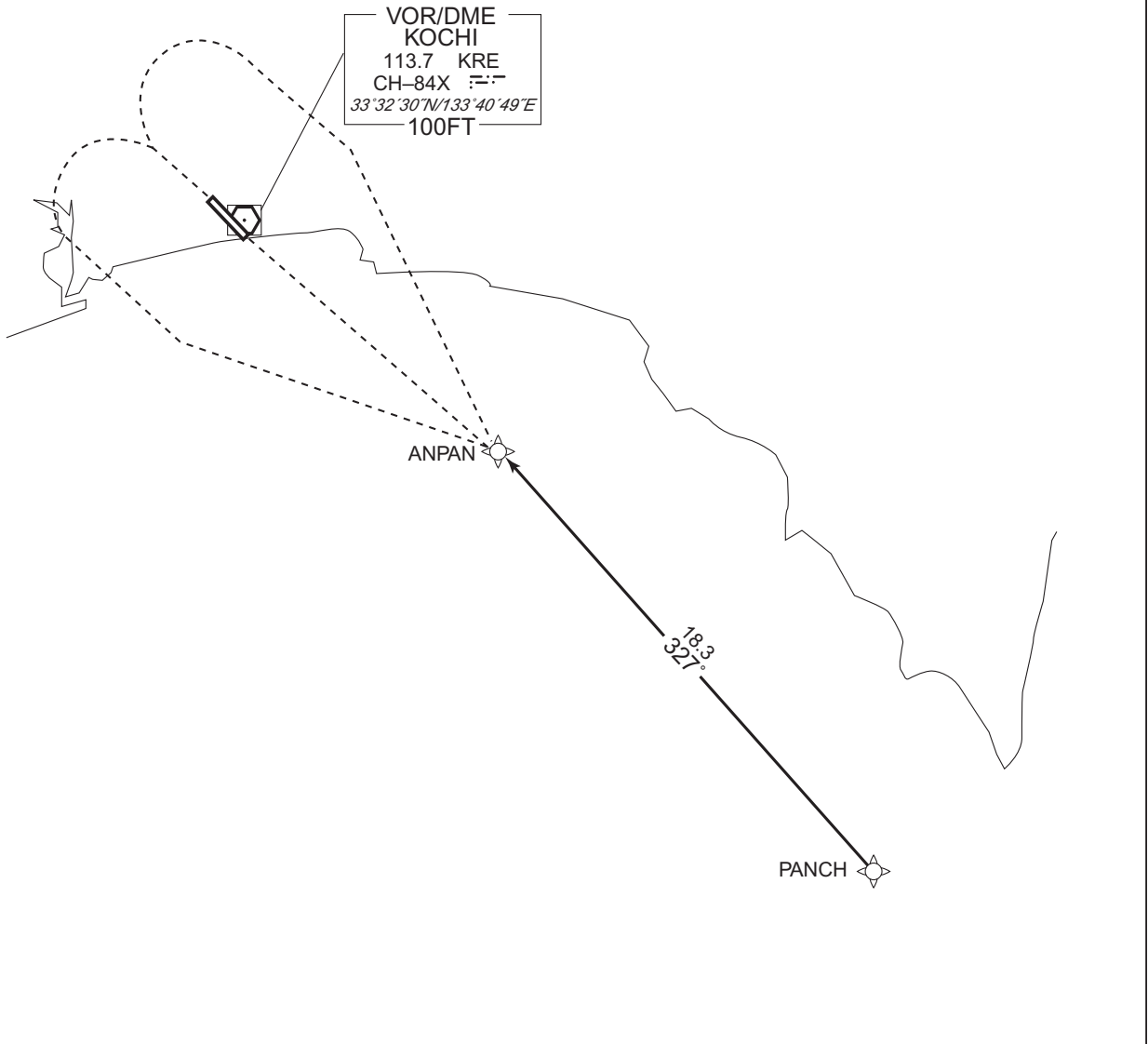
RJOK / KOCHI RNAV STAR

YOSAKOI EAST ARRIVAL

RNAV 1

Note 1 ) DME/DME/IRU or GNSS required.  
2 ) RADAR service required.

VAR 8° W



From PANCH, to ANPAN.

Critical DME	KRE	PANCH - ANPAN
	SUC	8NM to ANPAN - ANPAN
DME GAP	-	
Inappropriate NavAids	See AD1.1.6.10.3. Inappropriate NAVAIDs for RNAV1	

CHANGE : VAR. PROC course.

Serial Number	Path Descriptor	Waypoint Identifier	Fly Over	Course [°M(°T)]	Magnetic Variation	Distance (NM)	Turn Direction	Altitude (FT)	Speed (KIAS)	Vertical Angle	Navigation Specification
001	IF	PANCH	-	-	-7.9	-	-	-	-	-	RNAV1
002	TF	ANPAN	-	327 (318.7)	-7.9	18.3	-	-	-	-	RNAV1

STANDARD ARRIVAL CHART -INSTRUMENT

RJOK / KOCHI

RNAV STAR

Waypoint Coordinates

Waypoint Identifier	Coordinates	Waypoint Identifier	Coordinates
PANCH	331121.3N / 1340517.6E	ANPAN	332507.5N / 1335048.5E

CHANGE : Waypoint Coordinates added.