

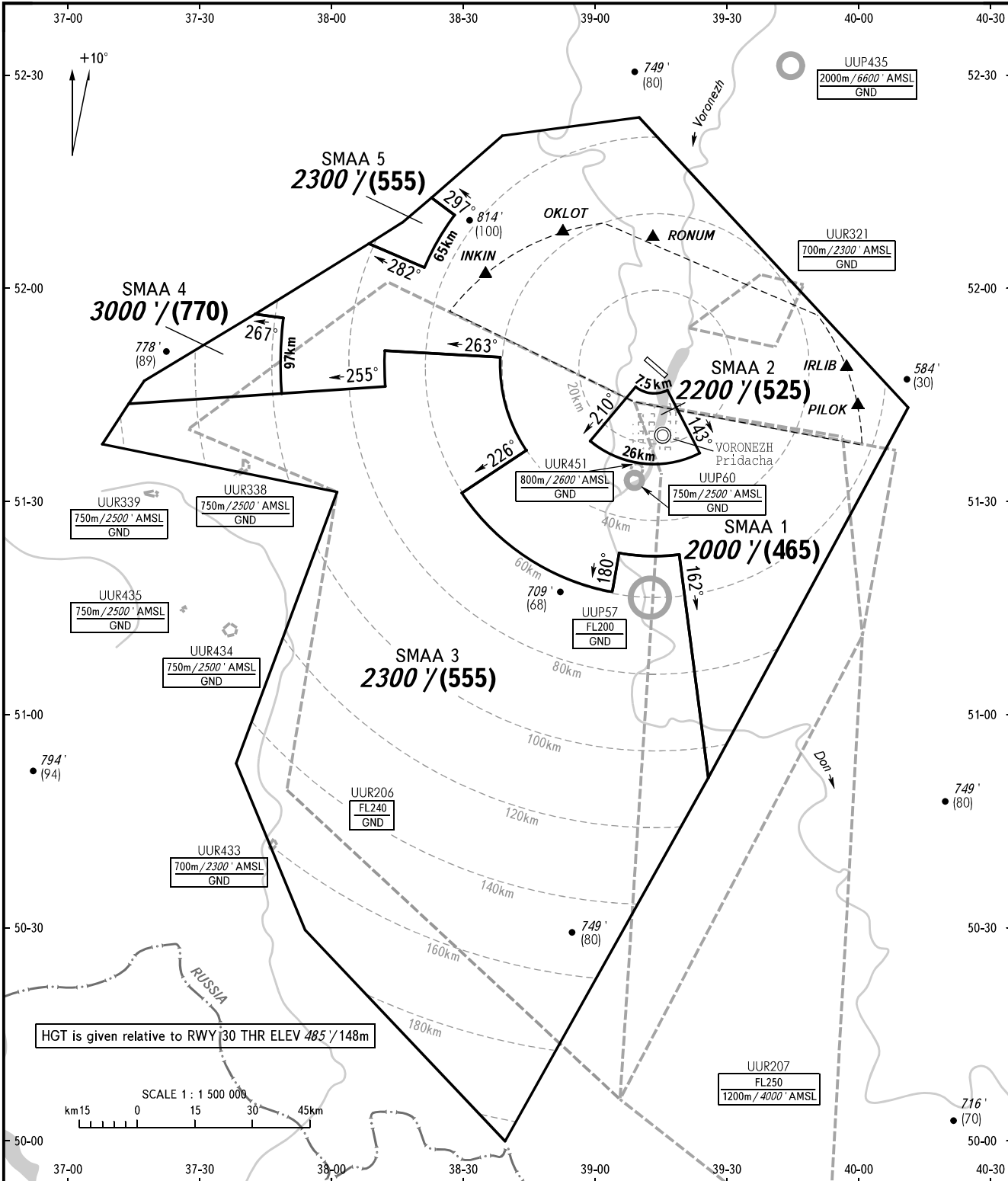
ATC SURVEILLANCE MINIMUM
ALTITUDE CHART - ICAO

ELEV
517 / 157m

TRANSITION ALT: 5000'
TRANSITION HGT: (1370)

VORONEZH, RUSSIA

CHERTOVITSKOYE



TOWER 118.300

WARNING:

1. The chart may only be used for cross-checking of altitudes assigned while the aircraft is under radar control.
2. When vectoring is carried out under low-temperature conditions, minimum vectoring altitudes for IFR flight must be corrected by altimeter temperature correction.

BEARINGS AND TRACKS ARE MAGNETIC
ALTITUDES IN FEET
HEIGHTS IN METRES
ELEVATIONS IN FEET AND METRES
DISTANCES IN KILOMETRES

Alt set: -QNH(QFE on req);
-hPa(mm on req).

CHANGE: New chart

VORONEZH, RUSSIA
CHERTOVITSKOYE

SURVEILLANCE MINIMUM ALTITUDE AREAS		
IDENT	MNM ALT (ft) HGT (m)	LATERAL LIMITS (PZ-90.11 coordinates)
SMAA 1	2000 (465)	522400N 0391000E - 514300N 0401054E - 505112N 0392529E - 512234N 0391905E, then clockwise by arc of a circle radius of 50 KM centred at 514917N 0391327E to 512247N 0390535E - 511727N 0390405E, then clockwise by arc of a circle radius of 60 KM centred at 514917N 0391327E to 513105N 0383008E - 513710N 0384440E, then clockwise by arc of a circle radius of 40 KM centred at 514917N 0391327E to 515013N 0383833E - 515057N 0381219E, then anticlockwise by arc of a circle radius of 70 KM centred at 514917N 0391327E to 514556N 0381235E - 514438N 0374902E, then clockwise by arc of a circle radius of 97 KM centred at 514917N 0391327E to 515518N 0374913E - 515546N 0374245E - 520558N 0380823E - 520244N 0382101E, then clockwise by arc of a circle radius of 65 KM centred at 514917N 0391327E to 521008N 0382752E - 521232N 0382233E - 522121N 0383837E - 522400N 0391000E, excluding SMAA 2.
SMAA 2	2200 (525)	514609N 0390916E, then anticlockwise by arc of a circle radius of 7.5 KM centred at 514917N 0391327E to 514541N 0391627E - 513649N 0392345E, then clockwise by arc of a circle radius of 26 KM centred at 514917N 0391327E to 513829N 0385859E - 514609N 0390916E.
SMAA 3	2300 (555)	515013N 0383833E, then anticlockwise by arc of a circle radius of 40 KM centred at 514917N 0391327E to 513710N 0384440E - 513105N 0383008E, then anticlockwise by arc of a circle radius of 60 KM centred at 514917N 0391327E to 511727N 0390405E - 512247N 0390535E, then anticlockwise by arc of a circle radius of 50 KM centred at 514917N 0391327E to 512234N 0391905E - 505112N 0392529E - 500003N 0384058E - 502921N 0375637E - 505235N 0374039E - 513100N 0380202E - 513658N 0370853E - 514245N 0371437E - 514556N 0381235E, then clockwise by arc of a circle radius of 70 KM centred at 514917N 0391327E to 515057N 0381219E - 515013N 0383833E.
SMAA 4	3000 (770)	515546N 0374245E - 515518N 0374913E, then anticlockwise by arc of a circle radius of 97 KM centred at 514917N 0391327E to 514438N 0374902E - 514245N 0371437E - 514602N 0371758E - 515546N 0374245E.
SMAA 5	2300 (555)	521232N 0382233E - 521008N 0382752E, then anticlockwise by arc of a circle radius of 65 KM centred at 514917N 0391327E to 520244N 0382101E - 520558N 0380823E - 520858N 0381552E - 521232N 0382233E.