

STANDARD ARRIVAL CHART -INSTRUMENT

RJOK / KOCHI

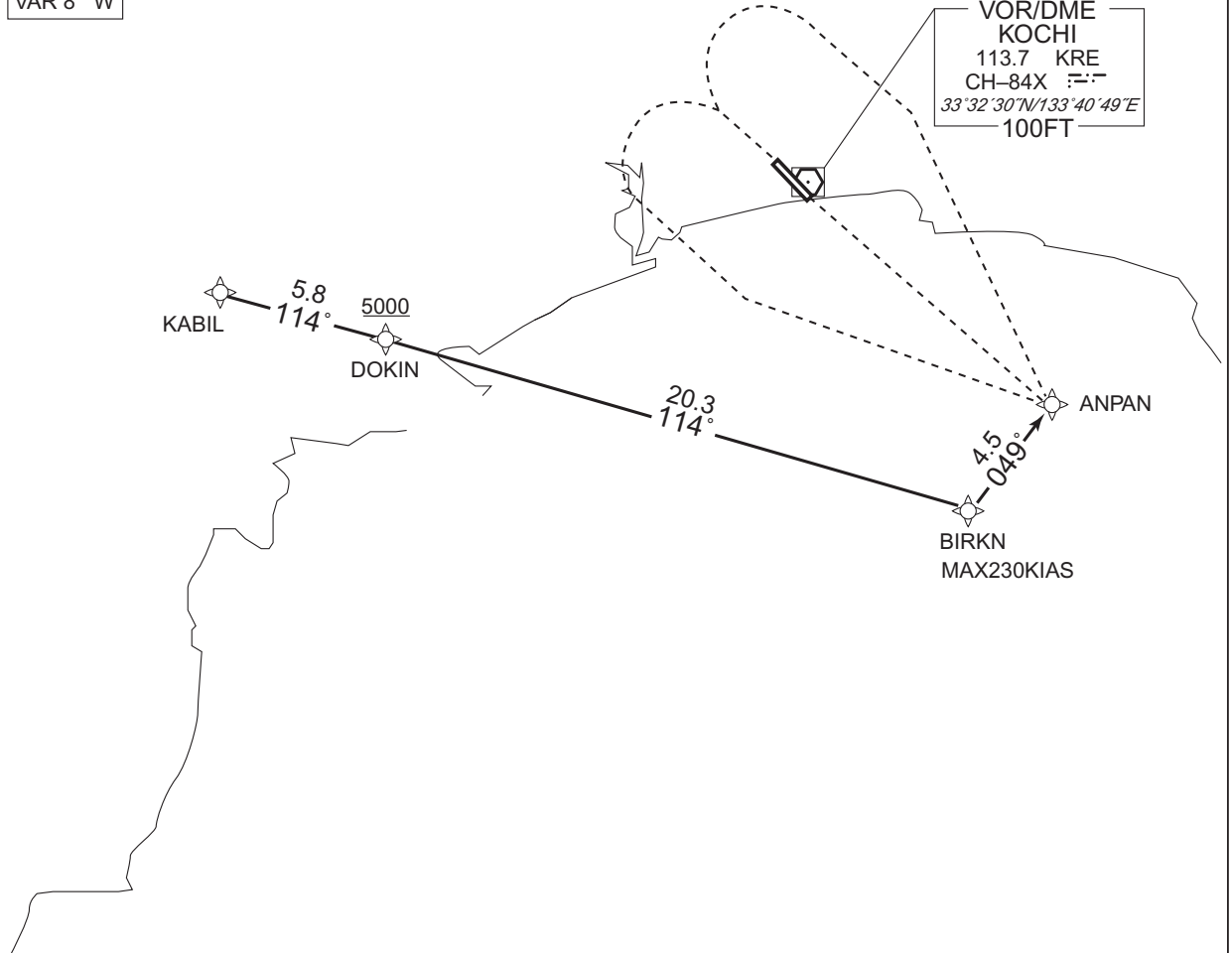
RNAV STAR

YOSAKOI WEST ARRIVAL

RNAV 1

Note 1) DME/DME/IRU or GNSS required.  
2) RADAR service required.

VAR 8° W



From KABIL, to DOKIN at or above 5000FT, to BIRKN, to ANPAN.

Critical DME	KRE	1NM to DOKIN - 16NM to BIRKN 7NM to BIRKN - ANPAN
	SUC	1NM to DOKIN - 16NM to BIRKN 7NM to BIRKN - ANPAN
DME GAP	16NM to BIRKN - 7NM to BIRKN	
Inappropriate Navaids	See AD1.1.6.10.3. Inappropriate NAVAIDs for RNAV1	

CHANGE : PROC course. VAR.

Serial Number	Path Descriptor	Waypoint Identifier	Fly Over	Course [°M(°T)]	Magnetic Variation	Distance (NM)	Turn Direction	Altitude (FT)	Speed (KIAS)	Vertical Angle	Navigation Specification
001	IF	KABIL	—	—	-7.9	—	—	—	—	—	RNAV1
002	TF	DOKIN	—	114 (105.9)	-7.9	5.8	—	+5000	—	—	RNAV1
003	TF	BIRKN	—	114 (105.9)	-7.9	20.3	—	—	-230	—	RNAV1
004	TF	ANPAN	—	049 (040.6)	-7.9	4.5	—	—	—	—	RNAV1

STANDARD ARRIVAL CHART -INSTRUMENT

RJOK / KOCHI

RNAV STAR

Waypoint Coordinates

Waypoint Identifier	Coordinates	Waypoint Identifier	Coordinates
KABIL	332854.0N / 1331717.4E	BIRKN	332142.6N / 1334717.9E
DOKIN	332718.9N / 1332357.6E	ANPAN	332507.5N / 1335048.5E

CHANGE : Waypoint Coordinates added.