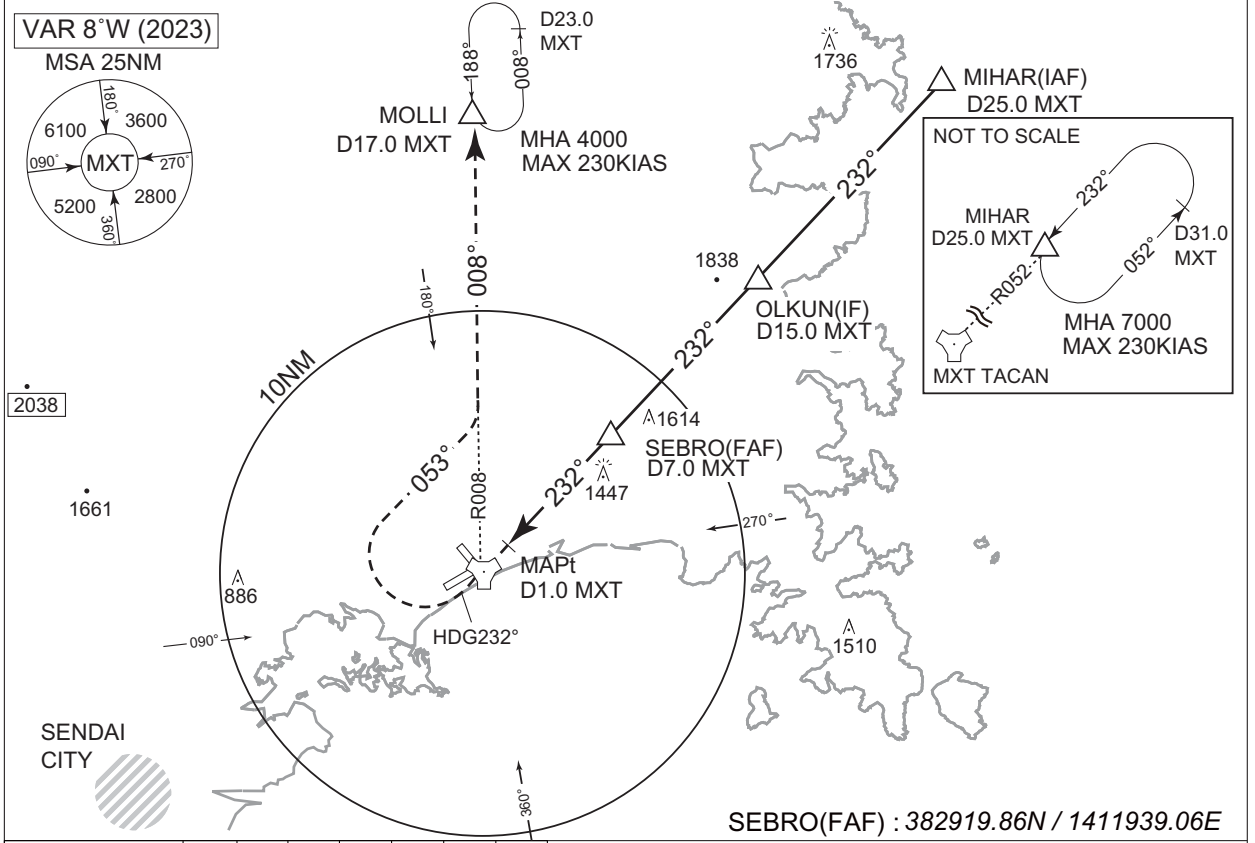


INSTRUMENT APPROACH CHART

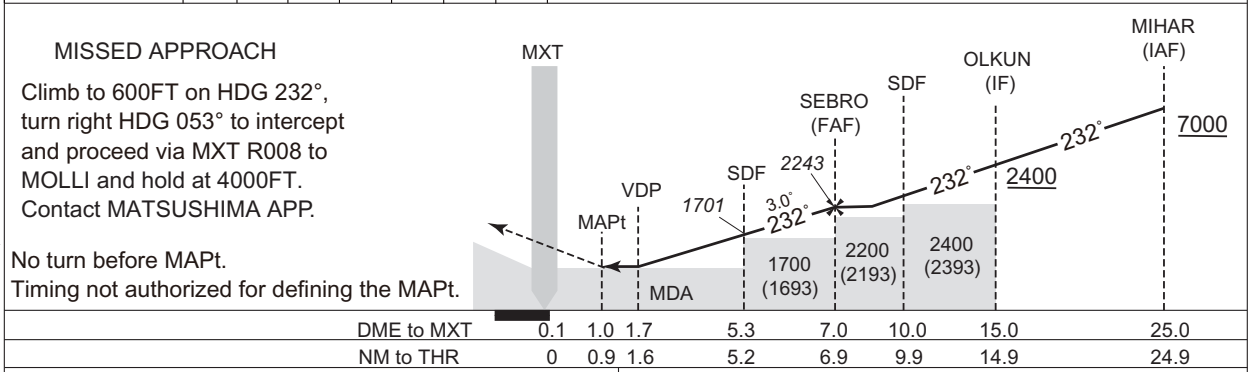
RJST / MATSUSHIMA

TACAN Z RWY25

MATSUSHIMA APP 120.1 - 261.2 - 362.3	MATSUSHIMA TACAN MXT CH-90X	MATSUSHIMA TOWER 126.2 - 236.8 304.6 - 275.8G	GCA AVBL CALL MATSUSHIMA APP
-----------------------------------------	-----------------------------------	-----------------------------------------------------	------------------------------------



NM to MXT	MAPt	2	3	4	5	6	FAF
ALT (3.0° APCH Path)	-	697	969	1287	1606	1924	2243



MINIMA		THR elev. 4	AD elev. 7			
CAT			CIRCLING			
	MDA(H)	RVR/CMV	MDA(H)	VIS		
A	510 (503)	1500	560 (553)	1600		
B						
C					600 (593)	2400
D						

Circling to South side and RWY07 only.

CHANGE : PROC renamed. PROC course. Missed APCH PROC. MINIMA. PROC ALT established. HLDG pattern. OLKUN, SEBRO established. ALT(3.0° APCH Path) established. THR ELEV. Circling restriction. DME to MXT. NM to THR added. VAR. MSA.