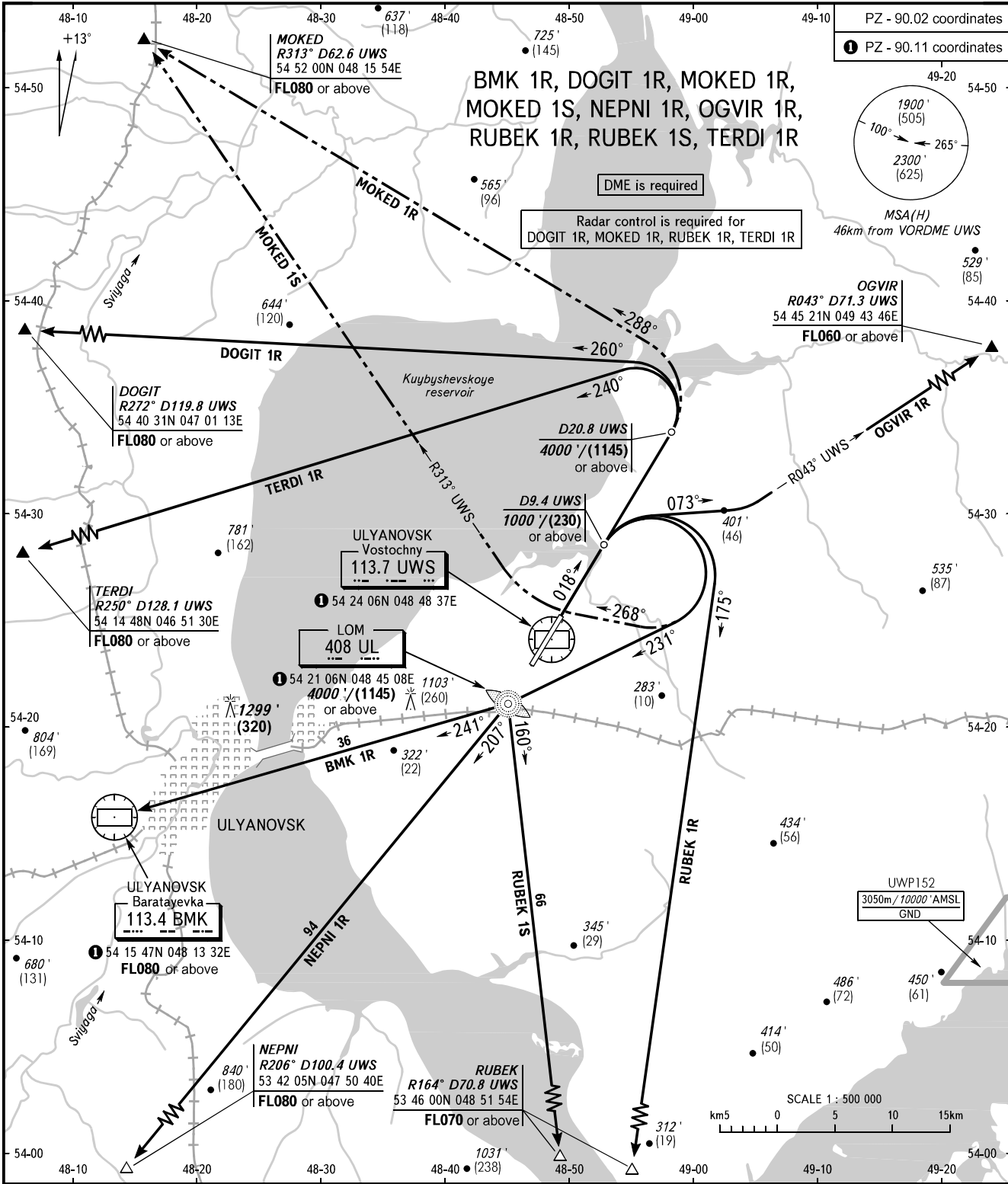


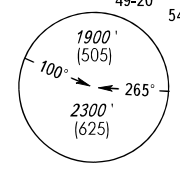
STANDARD DEPARTURE CHART  
INSTRUMENT (SID) - ICAO

TRANSITION ALT: **4000'**  
TRANSITION HGT: **(1200)**

ULYANOVSK, RUSSIA  
VOSTOCHNY  
RWY 02



PZ - 90.02 coordinates  
① PZ - 90.11 coordinates



DME is required  
Radar control is required for  
DOGIT 1R, MOKED 1R, RUBEK 1R, TERDI 1R

MSA(H)  
46km from VORDME UWS

OG VIR  
R043° D71.3 UWS  
54 45 21N 049 43 46E  
FL060 or above

DOGIT  
R272° D119.8 UWS  
54 40 31N 047 01 13E  
FL080 or above

TERDI  
R250° D128.1 UWS  
54 14 48N 046 51 30E  
FL080 or above

ULYANOVSK  
Vostochny  
113.7 UWS  
① 54 24 06N 048 48 37E

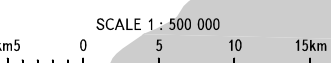
LOM  
408 UL  
① 54 21 06N 048 45 08E

ULYANOVSK  
Baratayevka  
113.4 BMK  
① 54 15 47N 048 13 32E  
FL080 or above

NEPNI  
R206° D100.4 UWS  
53 42 05N 047 50 40E  
FL080 or above

RUBEK  
R164° D70.8 UWS  
53 46 00N 048 51 54E  
FL070 or above

UWP152  
3050m / 10000' AMSL  
GND



VOSTOCHNY TOWER 124.200

MINIMUM CLIMB GRADIENTS:  
DOGIT 1R, MOKED 1R, TERDI 1R: 6.2% up to 4000'/(1145).

CHANGE: New chart

BEARINGS AND TRACKS ARE MAGNETIC  
ALTITUDES IN FEET  
ELEVATIONS IN FEET AND METRES  
HEIGHTS IN METRES  
DISTANCES IN KILOMETRES

Alt set: - QNH (QFE on req);  
- hPa (mm on req).