

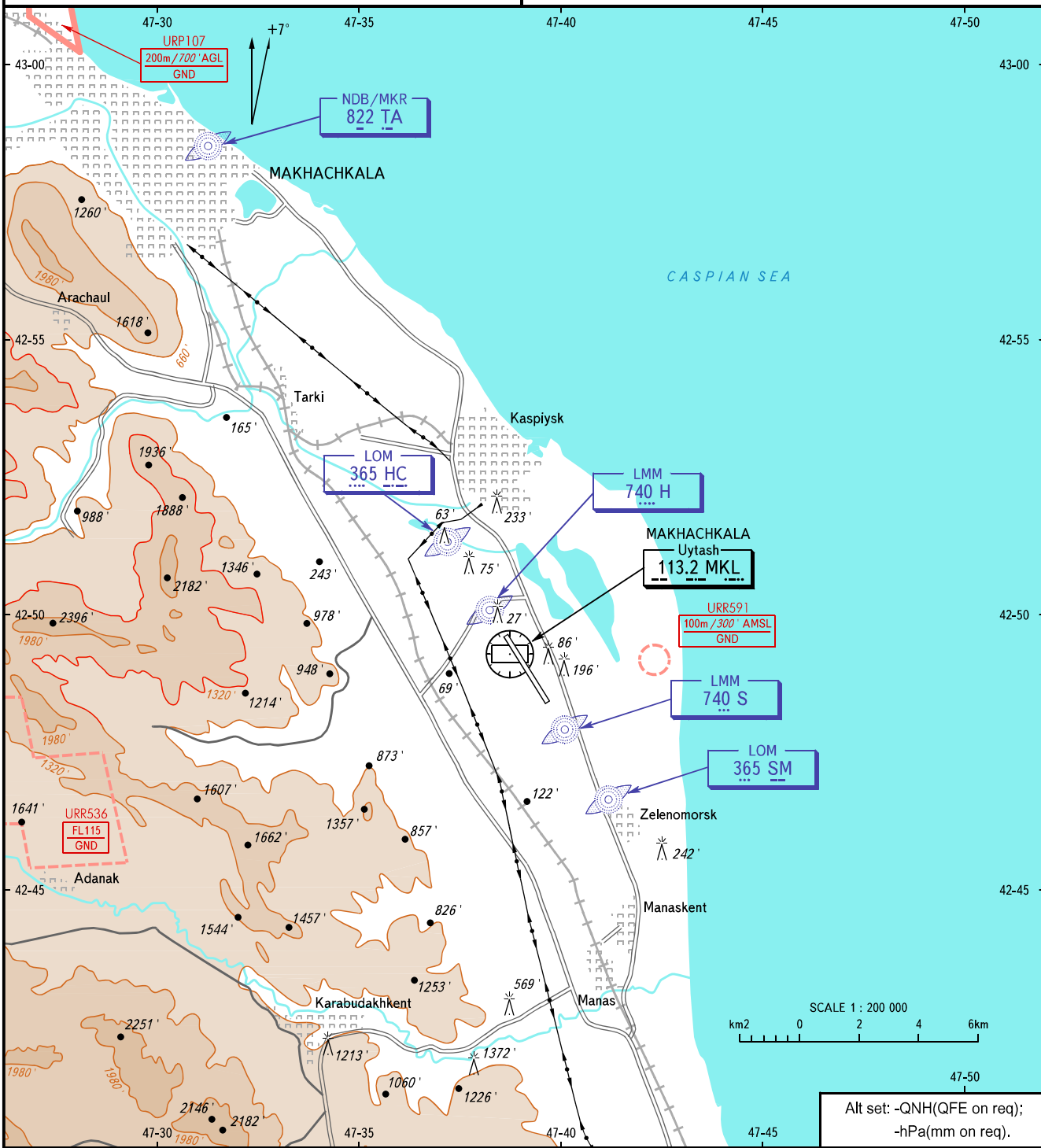
VISUAL
APPROACH
CHART - ICAO

RADAR	121.300
START	121.300

MAKHACHKALA, RUSSIA
UYTASH
RWY 14/32

TRANSITION LEVEL: **1**

AD ELEV: 16' / 5m



- 1** TRANSITION LEVEL:
- FL110 when QNH is 1013 hPa (760mm mercury column) or above;
 - FL120 when QNH is 977 hPa (733mm mercury column) or above but less than 1013 hPa (760mm mercury column);
 - FL130 when QNH is less than 977 hPa (733mm mercury column).

CHANGE: URP107, URR536, URR591