


| | | |
|--|------------------------|--|
| WAAS CH 50114 W18A | APP CRS 177° | Rwy Idg 12901 TDZE 1195 Apt Elev 1219 |
|--|------------------------|--|

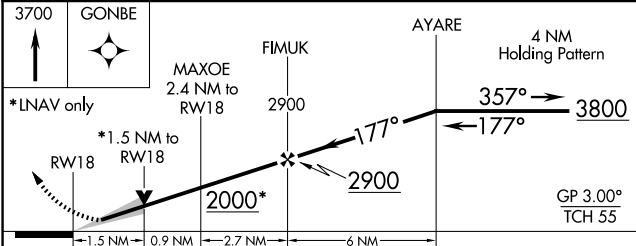
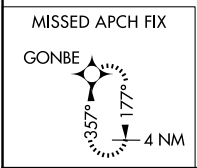
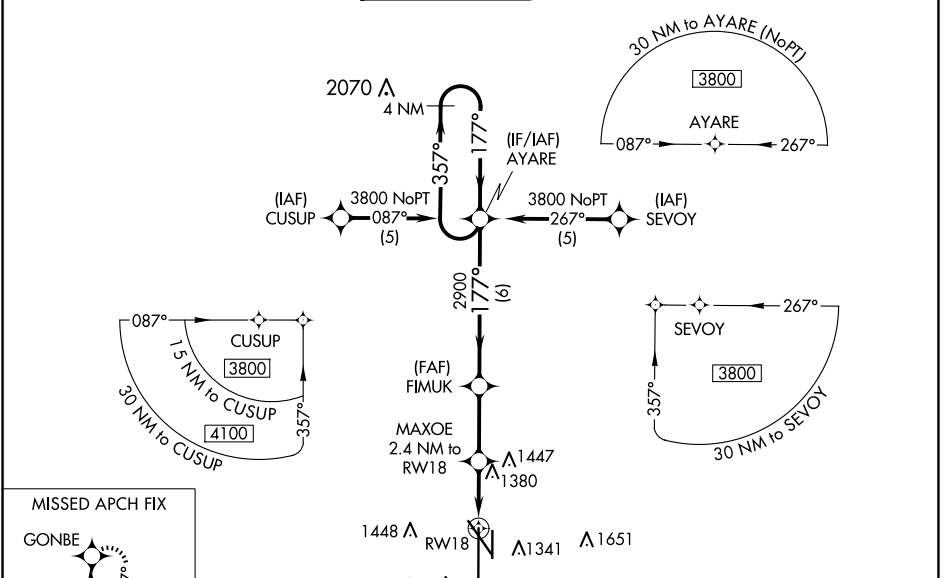
RNAV (GPS) RWY 18

LINCOLN (LNK)

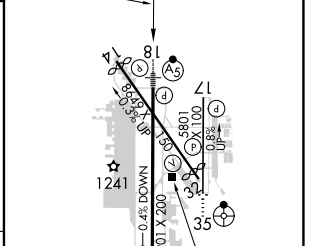
▼ For uncompensated Baro-VNAV systems, LNAV/VNAV NA below -17°C (2°F) or above 54°C (130°F). DME/DME RNP-0.3 NA. When local altimeter setting not received, use Beairice altimeter setting and increase all DA 91 feet, all MDA 100 feet, increase LPV all Cats, LNAV Cats C and D, and Circling Cats C and D visibilities ¼ mile, and increase LNAV/VNAV all Cats visibility ½ mile. For inop MALSRL, when using Beairice altimeter setting increase LPV all Cats visibility to 1¼ mile. Baro-VNAV and VDP NA when using Beairice altimeter setting.

MALSRL

MISSED APPROACH:
 Climb to 3700 direct GONBE and hold.

| | | | | | |
|-----------------------------|-------------------------------------|---|-------------------------------|--------------------------------|-------------------------|
| ATIS 118.05 290.9 | OMAHA APP CON 124.0 270.3 | LINCOLN TOWER* 118.5(CTAF) 253.5 | GND CON 121.9 275.8 | CLNC DEL 120.7 225.4 | UNICOM 122.95 |
|-----------------------------|-------------------------------------|---|-------------------------------|--------------------------------|-------------------------|



| | | |
|-----------|----------|-----------|
| ELEV 1219 | D | TDZE 1195 |
|-----------|----------|-----------|



| CATEGORY | A | B | C | D |
|--------------|-----------------------|-----------------------|-------------------------|-------------------------|
| LPV DA | | 1445/24 | 250 (300-½) | |
| LNAV/VNAV DA | | 1720/60 | 525 (600-1¼) | |
| LNAV MDA | 1720/24 | 525 (600-½) | 1720/50 525 (600-1) | 1720/60 525 (600-1¼) |
| CIRCLING | 1720-1 501 (600-1) | 1760-1 541 (600-1) | 1820-1¾ 601 (700-1¾) | 1960-2½ 741 (800-2½) |

HIRL Rwy 18-36
 REIL Rwy 14 and 17
 MIRL Rwy 14-32 and 17-35

NC-2, 20 MAR 2025 to 17 APR 2025

NC-2, 20 MAR 2025 to 17 APR 2025