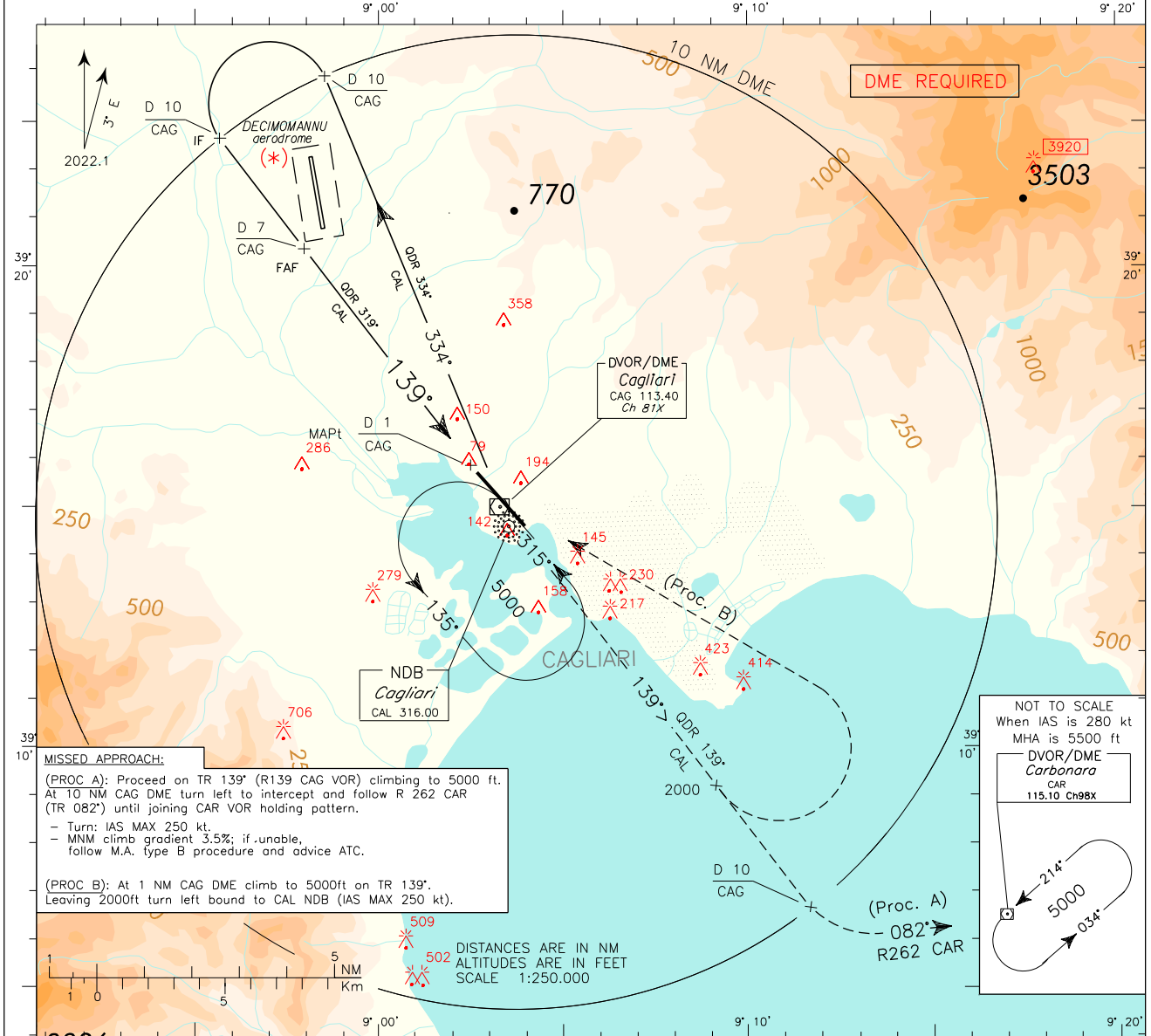
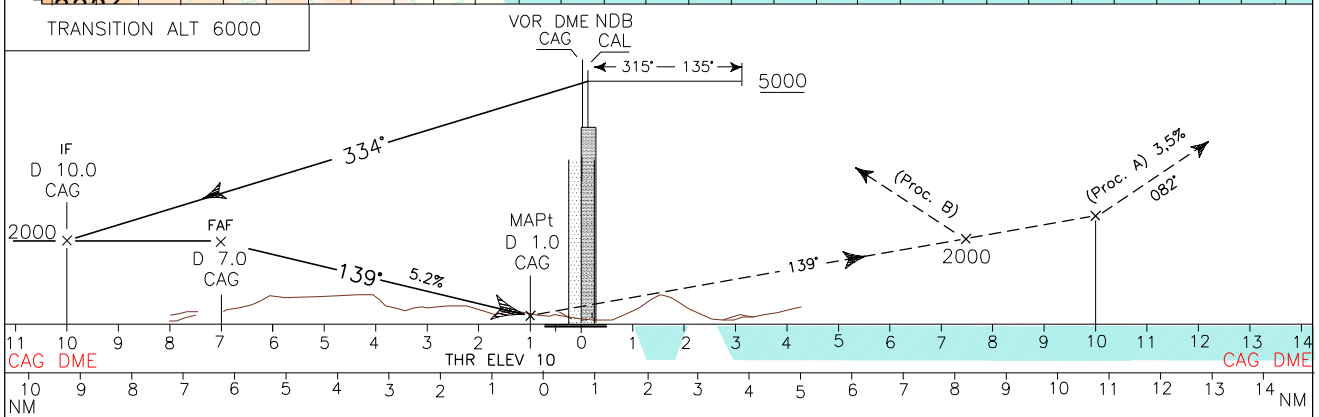


ICAO - INSTRUMENT APPROACH CHART

<p>(*) WARNING: Pilots shall pay attention to "DECIMOMANNU" aerodrome North-West of the field - distance 6 NM.</p>	APP Cagliari APP	119.275 (122.950)	AD ELEV	L E	CAGLIARI/ELMAS NDB RWY 14
	Cagliari Radar	(122.950)			
	TWR Elmas TWR	120.605 122.100	11		
	ATIS Cagliari Arrival and departure Info	127.055			



CHANGE: VOR/DME 'CAG' replaced by DVOR/DME 'CAG'



OCA (OCH)		A	B	C	D	CIRCLING SECTOR 	FT PER MIN	GS	DIST	ALT (HGT)	MNM SECT ALT CAL NDB	
STRAIGHT IN APPROACH	NDB	570 (560)										
	CIRCLING	1100 (1090)				480	90	2 : 59	5 DME	1370 (1360)		
				640	120	2 : 30	4 DME	1050 (1040)				
				800	150	2 : 08	3 DME	740 (730)				
				960	180	1 : 52	2.5 DME	570 (560)				

Edited by AM-CIGA