

SCHWAEBISCH HALL
RWY 28
DKB 1W ETASA 1W GUPIN 1W
LAMPU 1W LBU 1W YOLFO 1W

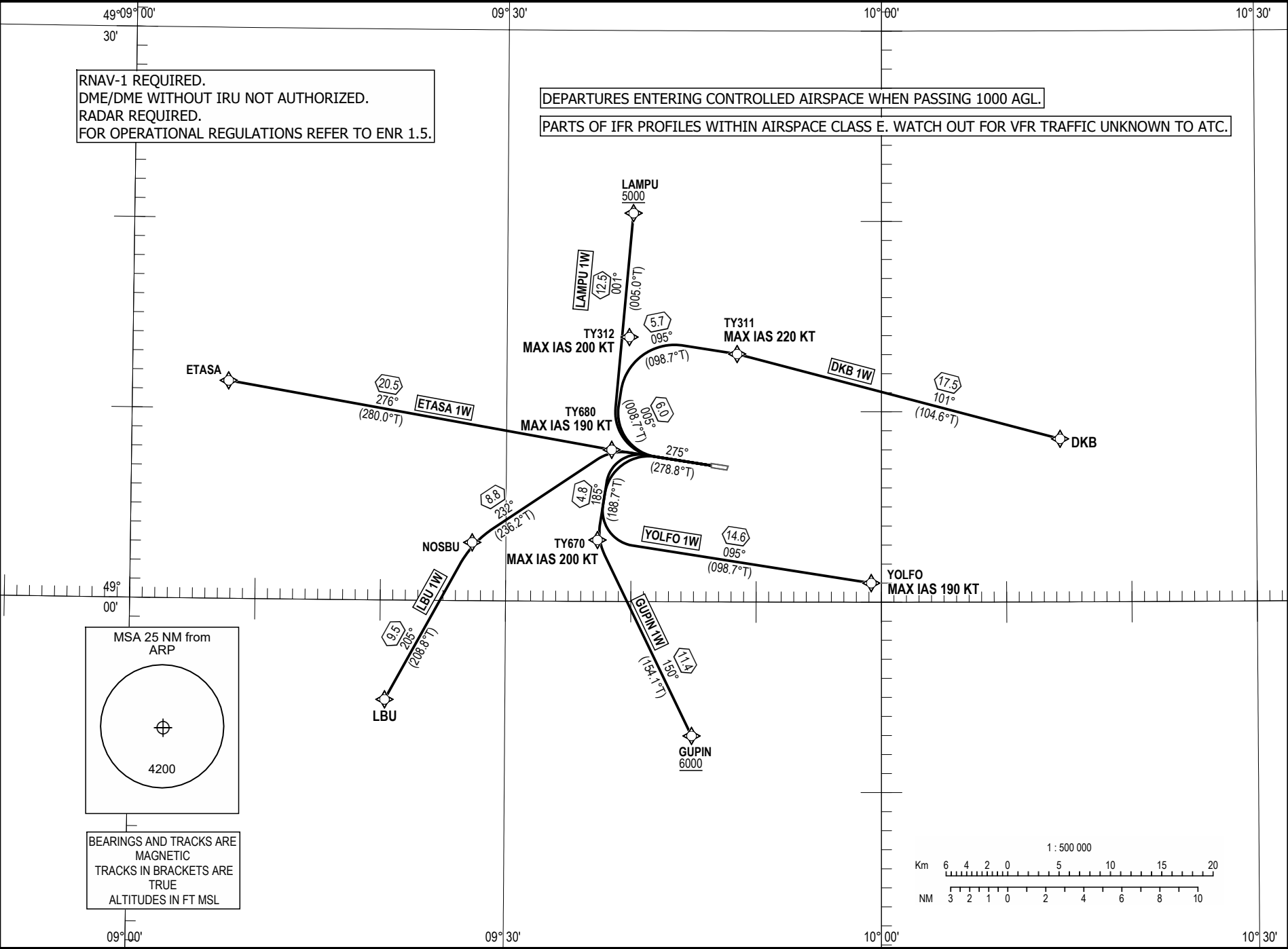
SCHWAEBISCH HALL ATIS
SCHWAEBISCH HALL INFORMATION
LANGEN RADAR

133 880
129 230
125 050

TRANSITION
ALTITUDE 5000
VAR 4° E

STANDARD INSTRUMENT
DEPARTURE CHART (SID)
RNAV (GPS, DME/DME/IR)

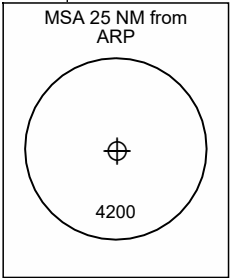
Correction: New Chart



RNAV-1 REQUIRED.
DME/DME WITHOUT IRU NOT AUTHORIZED.
RADAR REQUIRED.
FOR OPERATIONAL REGULATIONS REFER TO ENR 1.5.

DEPARTURES ENTERING CONTROLLED AIRSPACE WHEN PASSING 1000 AGL.

PARTS OF IFR PROFILES WITHIN AIRSPACE CLASS E. WATCH OUT FOR VFR TRAFFIC UNKNOWN TO ATC.



BEARINGS AND TRACKS ARE
MAGNETIC
TRACKS IN BRACKETS ARE
TRUE
ALTITUDES IN FT MSL

