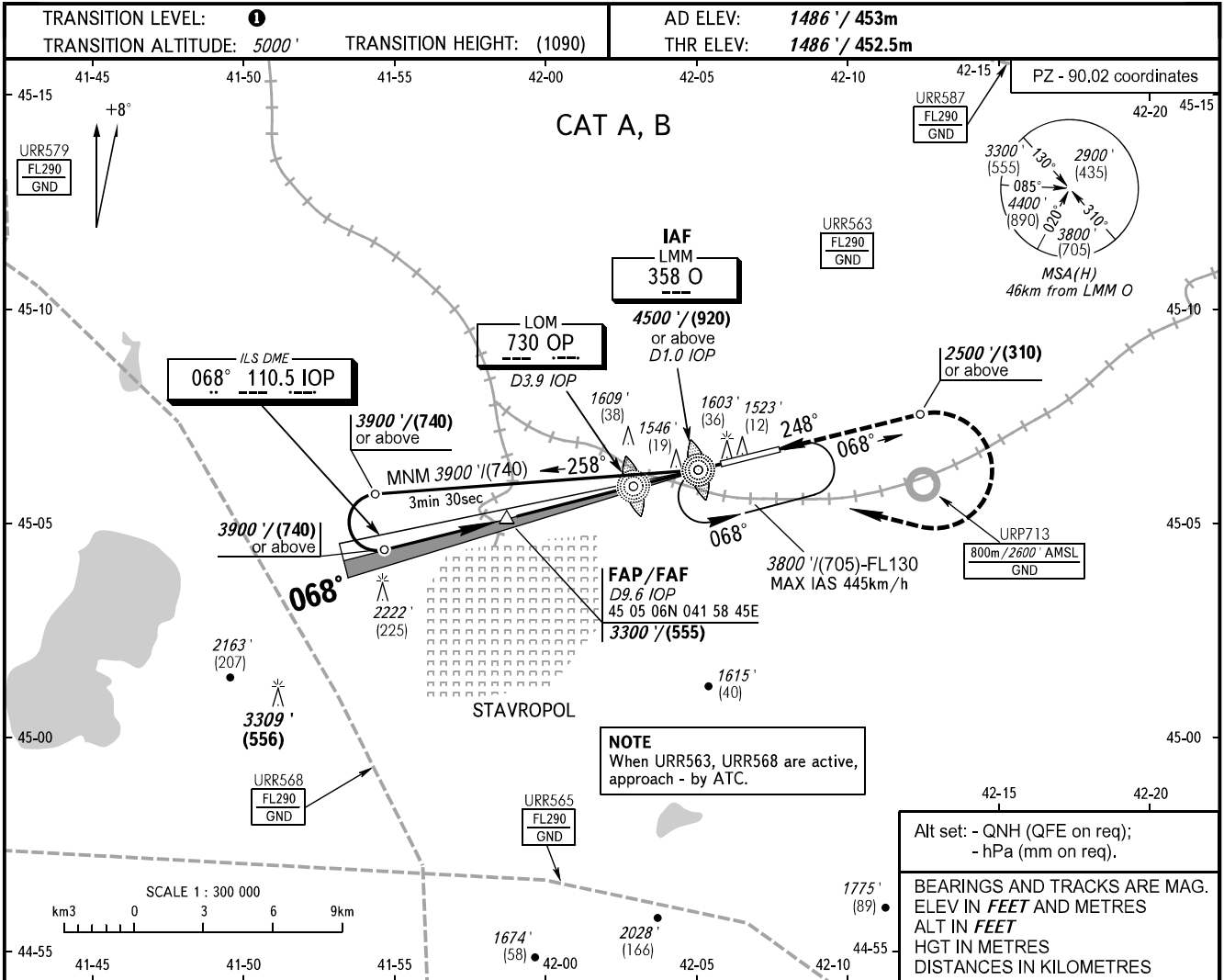


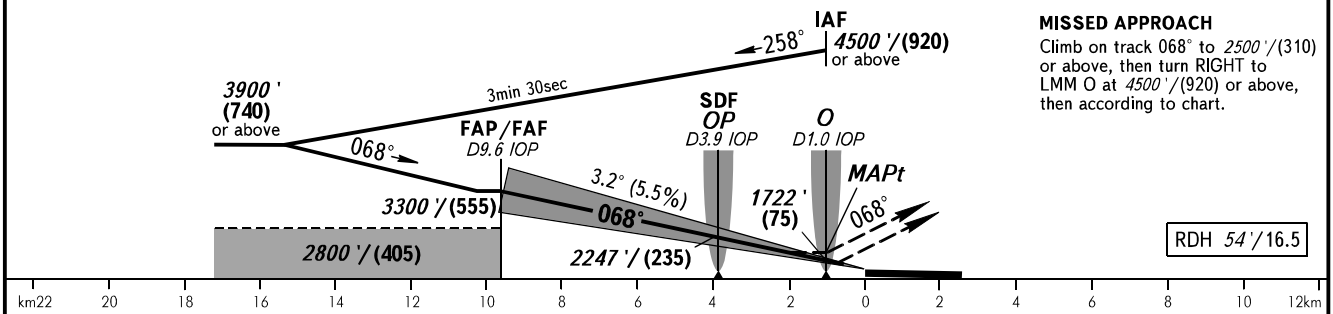
**INSTRUMENT  
APPROACH  
CHART - ICAO**

**STAVROPOL, RUSSIA  
SHPAKOVSKOYE  
ILS W CAT I, LOC W RWY 07**

TOWER **120.900**



DME IOP	9.6	8.0	6.0	4.0	2.0
ALTITUDE/HEIGHT	3300' / (555)	2990' / (460)	2630' / (350)	2270' / (240)	1910' / (130)



OCA(H)		A	B	C	D	<b>1</b> TRANSITION LEVEL: - FL060 when QNH is 1013 hPa (760mm mercury column) or above; - FL070 when QNH is 977 hPa (733mm mercury column) or above, but less than 1013 hPa (760mm mercury column); - FL080 when QNH is less than 977 hPa (733mm mercury column).  <b>WARNING:</b> 1. MAPt at LMM O. Timing not authorized for defining MAPt. 2. ILS DME IOP reads zero at RWY 07 THR.
Straight-in Approach	CAT I	1652' (167') (51)	1665' (179') (55)			
	LOC With SDF	1810' (320') (100)	1810' (320') (100)			
	LOC WO SDF	1980' (500') (155)	1980' (500') (155)			
Circling		1940' (450') (140)	1980' (500') (155)			

GROUND SPEED	km/h	150	180	210	240	270	300	330	360	390
RATE OF DESCENT	m/s	2.3	2.8	3.2	3.7	4.1	4.6	5.1	5.5	6.0
	ft/min	451	541	632	722	812	902	992	1082	1173

CHANGE: Limiting bearing line withdrawn, URP713