

DAYTON, OHIO

# ILS or LOC RWY 5L

LOC I-FAE <b>109.7</b>	APCH CRS <b>053°</b>	Rwy Idg <b>12,600</b> TDZE <b>803</b> Arprt Elev <b>823</b>
---------------------------	-------------------------	---

[USAF]

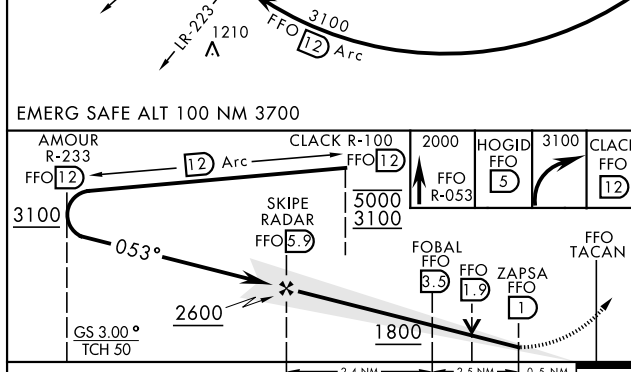
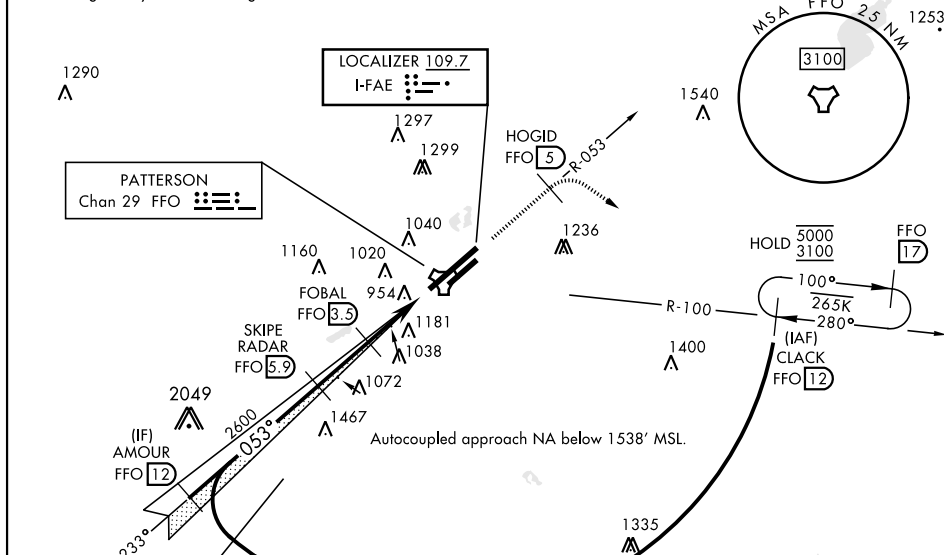
WRIGHT-PATTERSON AFB (KFFO)

DME or RADAR required for Localizer.  
 \* When ALS inop, increase RVR to 40 and vis to 3/4 mile.

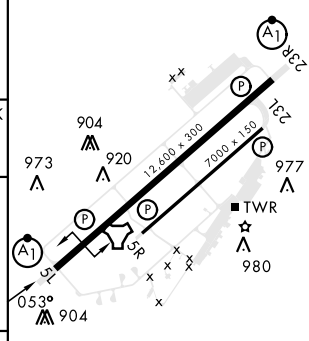
ALS-1 MISSED APPROACH: Climb to 2000 via FFO R-053 at 5 DME, turn right direct CLACK climbing to 3100 and hold.

ATIS <b>124.475 269.9</b>	COLUMBUS APP CON <b>118.85 269.275</b>	PATTERSON TOWER <b>127.8 281.45</b>	GND CON <b>121.8 335.8</b>
------------------------------	---	--	-------------------------------

\*\* When ALS inop, increase CAT AB RVR to 55 and vis to 1 mile, CAT CDE vis to 1 1/2 miles.  
 \*\*\* When Rwy 23R VGSI inop, circling to Rwy 23R NA at night.  
 † Missed approach requires use of RNAV or ATC RADAR monitoring.



ELEV 823	TDZE 803
----------	----------



CATEGORY	A	B	C	D	E
S-ILS 5L*	1003/24		200	(200-1/2)	
S-LOC 5L**	1280/24	476 (500-1/2)	1280/50	476 (500-1)	
CIRCLING***	1380-1 557 (600-1)	1440-1 617 (700-1)	1560-2 737 (800-2)	1620-2 1/2 797 (800-2 1/2)	1620-2 3/4 797 (800-2 3/4)

HIRL Rwy 5L-23R	1038
MIRL Rwy 5R-23L	▲
FAF to MAP 4.9 NM	
Knots	60 90 120 150 180
Min:Sec	4:54 3:16 2:27 1:58 1:38

DAYTON, OHIO  
Amdt 4 28DEC23

39° 50' N-84° 03' W

WRIGHT-PATTERSON AFB (KFFO)

# ILS or LOC RWY 5L

EC-2, 20 MAR 2025 to 17 APR 2025

EC-2, 20 MAR 2025 to 17 APR 2025