

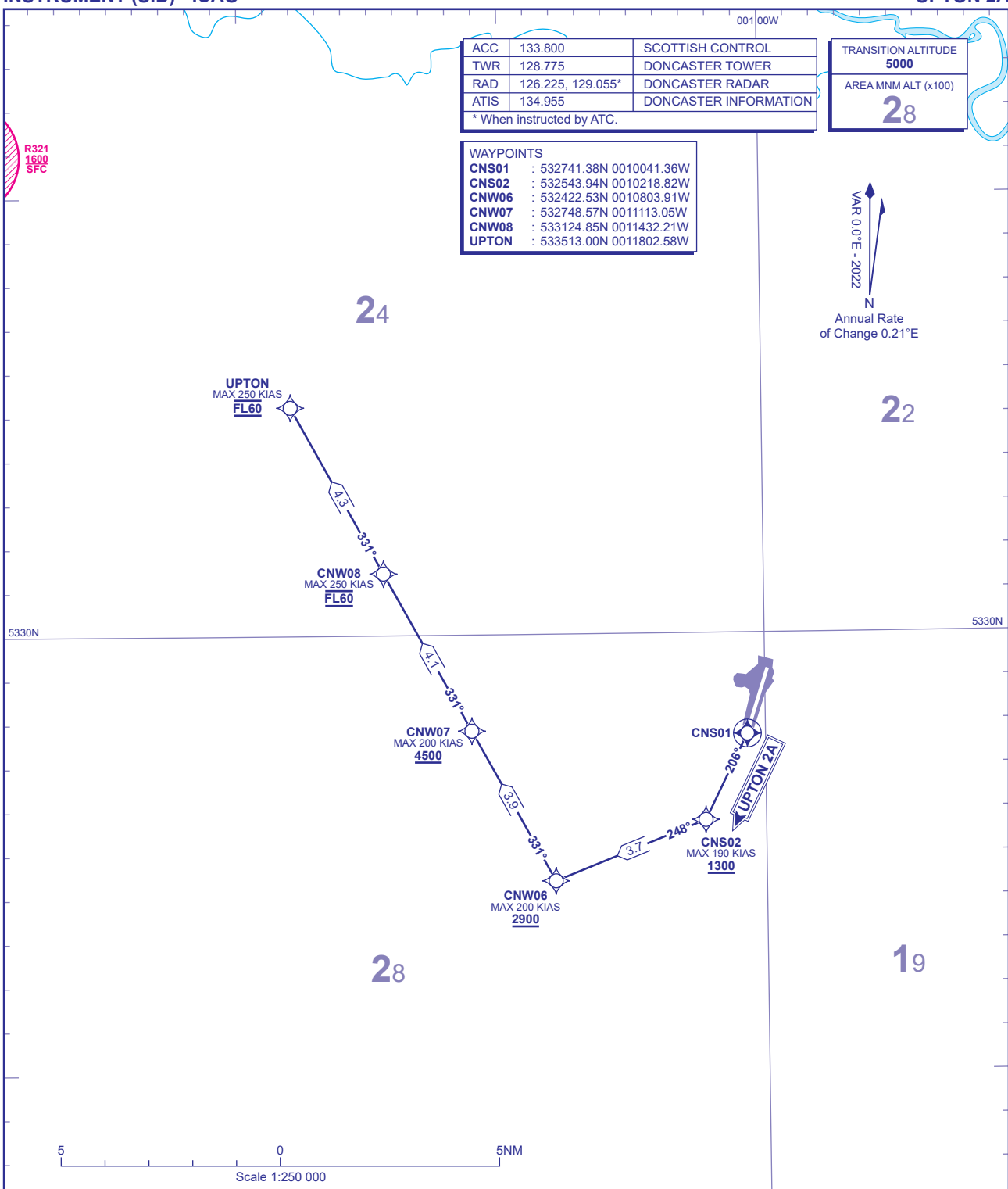
ACC	133.800	SCOTTISH CONTROL
TWR	128.775	DONCASTER TOWER
RAD	126.225, 129.055*	DONCASTER RADAR
ATIS	134.955	DONCASTER INFORMATION

TRANSITION ALTITUDE	5000
AREA MNM ALT (x100)	28

WAYPOINTS

CNS01	: 532741.38N 0010041.36W
CNS02	: 532543.94N 0010218.82W
CNW06	: 532422.53N 0010803.91W
CNW07	: 532748.57N 0011113.05W
CNW08	: 533124.85N 0011432.21W
UPTON	: 533513.00N 0011802.58W

VAR 0.1°E - 2022
N
Annual Rate of Change 0.21°E



UPTON 2A RWY 20 Climb straight ahead to CNS01, right to intercept a course of 206° to CNS02, right to CNW06, right to CNW07 - CNW08 - UPTON.

- NOTE 1. RWY 20 obstacle requirement: minimum climb gradient 8.8% to 400 AAL.
- NOTE 2. Close-in obstacles exist for RWY 20 departures. See Aerodrome Obstacle Chart and EGCN AD 2.10 Aerodrome Obstacles.
- NOTE 3. Adhere to maximum speed limits where specified by waypoint constraints.
- NOTE 4. Maximum 250 KIAS below **FL100** unless authorised by ATC.
- NOTE 5. Aircraft unable to achieve the published altitude/flight level restrictions must inform ATC prior to departure.

ADDITIONAL RNAV DATA

- 1. DME/DME only procedure: no critical nav aids.
- 2. RNAV1 SIDs are available only for approved aircraft that are either GNSS equipped or that have DME/DME and INS/IRU with automatic runway updating capability.

GENERAL INFORMATION

- 1. RNAV1 SIDs reflect Noise Preferential Routings. See EGCN AD 2.21 Noise Abatement Procedures.