

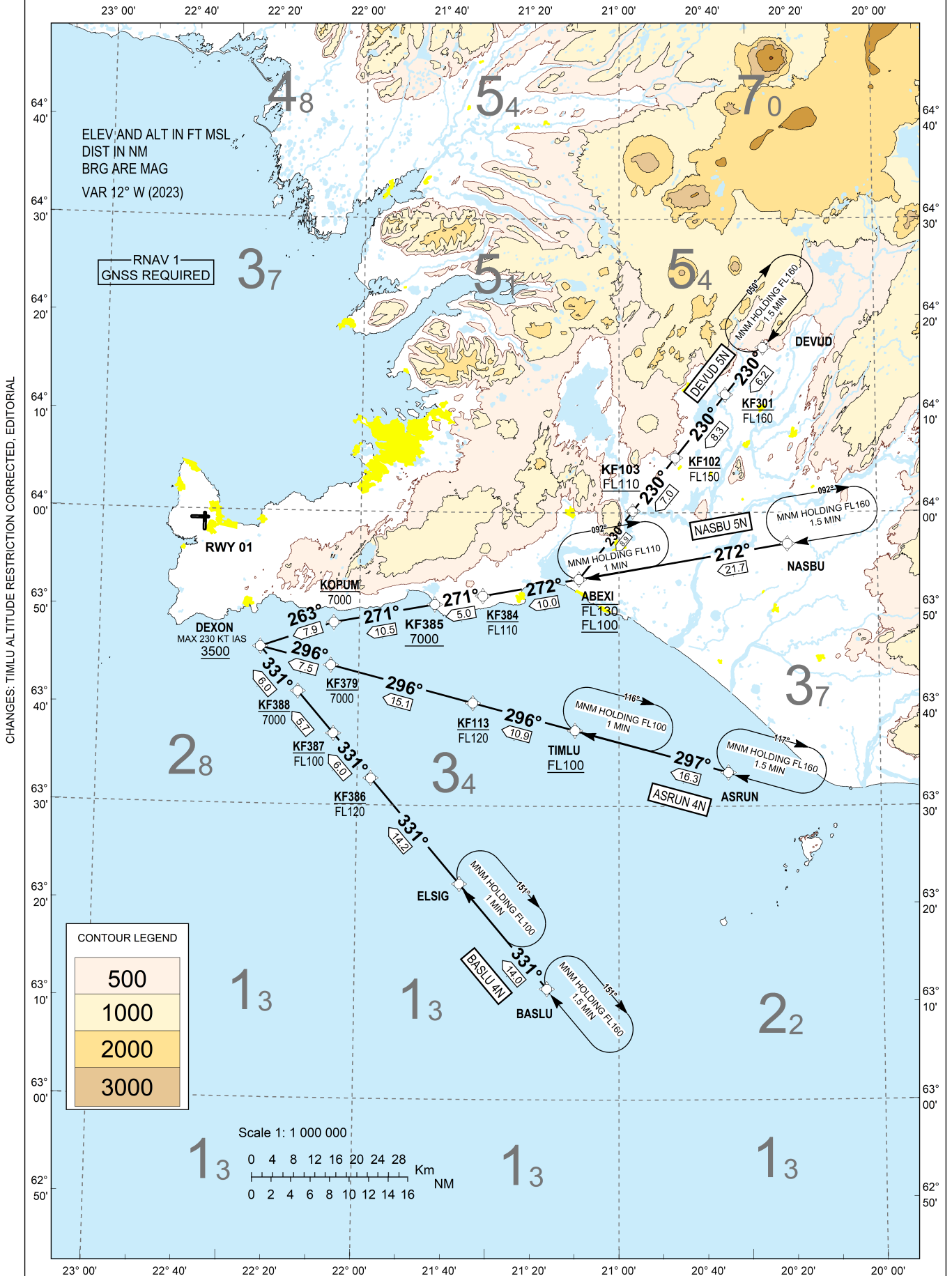
KEFLAVIK RNAV STAR RWY 01 (East)

STANDARD ARRIVAL CHART -
INSTRUMENT (STAR) - ICAO
CONTINUOUS DESCENT ARRIVALS

TRANSITION
ALTITUDE 7000
AD ELEV 170

ATIS	128.300
APP	119.300
TWR	118.300
ACC	119.700

BIKF - KEFLAVIK
RNAV STAR RWY 01
DEVUD 5N, NASBU 5N, ASRUN 4N, BASLU 4N



STANDARD ARRIVAL ROUTES -
INSTRUMENT (STAR) - ICAO
CONTINUOUS DESCENT ARRIVALS
(RNAV 1 STAR BASED ON GNSS)

BIKF - KEFLAVIK
RNAV STAR RWY 01

GENERAL: Vectoring may be used when necessary.
Loss of RNAV1 capability - Advise ATC.
Maximum speed below FL100: 250 kt IAS unless otherwise stated under RESTRICTIONS or instructed by ATC.

RADIO COMMUNICATION FAILURE: Set transponder to A 7600.
Follow cleared or expected STAR until IAF, then start approach to assigned runway without delay.

NON RNAV 1 ACFT: State "UNABLE RNAV 1", expect radar vectoring.

NOTE: At first contact with KEFLAVIK APPROACH state callsign and ATIS received only.
Change to Keflavik QNH at Transition Level or when passing last Flight Level restriction if higher.

DESIGNATOR	ROUTE	RESTRICTIONS	DESCEND	CLEARANCE LIMIT
DEVUD 5N	From DEVUD to KF301 to KF102 to KF103 to ABEXI to KF384 to KF385 to KOPUM to DEXON	Cross KF301 at FL160 or below cross KF102 at FL150 or below cross KF103 at FL110 or above, Cross ABEXI between FL100 and FL130, cross KF384 at FL110 or below, cross KF385 at 7000 FT or above, cross KOPUM at 7000 FT or below, cross DEXON at 3500 FT or above, speed 230 KT IAS or less at DEXON.	As cleared by ATC	DEXON
NASBU 5N	From NASBU to ABEXI to KF384 to KF385 to KOPUM to DEXON	Cross ABEXI between FL100 and FL130, cross KF384 at FL110 or below, cross KF385 at 7000 FT or above, cross KOPUM at 7000 FT or below, cross DEXON at 3500 FT or above, speed 230 KT IAS or less at DEXON.	As cleared by ATC	DEXON
ASRUN 4N	From ASRUN to TIMLU to KF113 to KF379 to DEXON	Cross TIMLU at FL100 or above, cross KF113 at FL120 or below, cross KF379 at 7000 FT or below, cross DEXON at 3500 FT or above, speed 230 KT IAS or less at DEXON.	As cleared by ATC	DEXON
BASLU 4N	From BASLU to ELSIG to KF386 to KF387 to KF388 to DEXON	Cross KF386 at FL120 or below, cross KF387 at FL100 or below, cross KF388 at 7000 FT or below, cross DEXON at 3500 FT or above speed 230 KT IAS or less at DEXON.	As cleared by ATC	DEXON

CHANGES: EDITORIAL