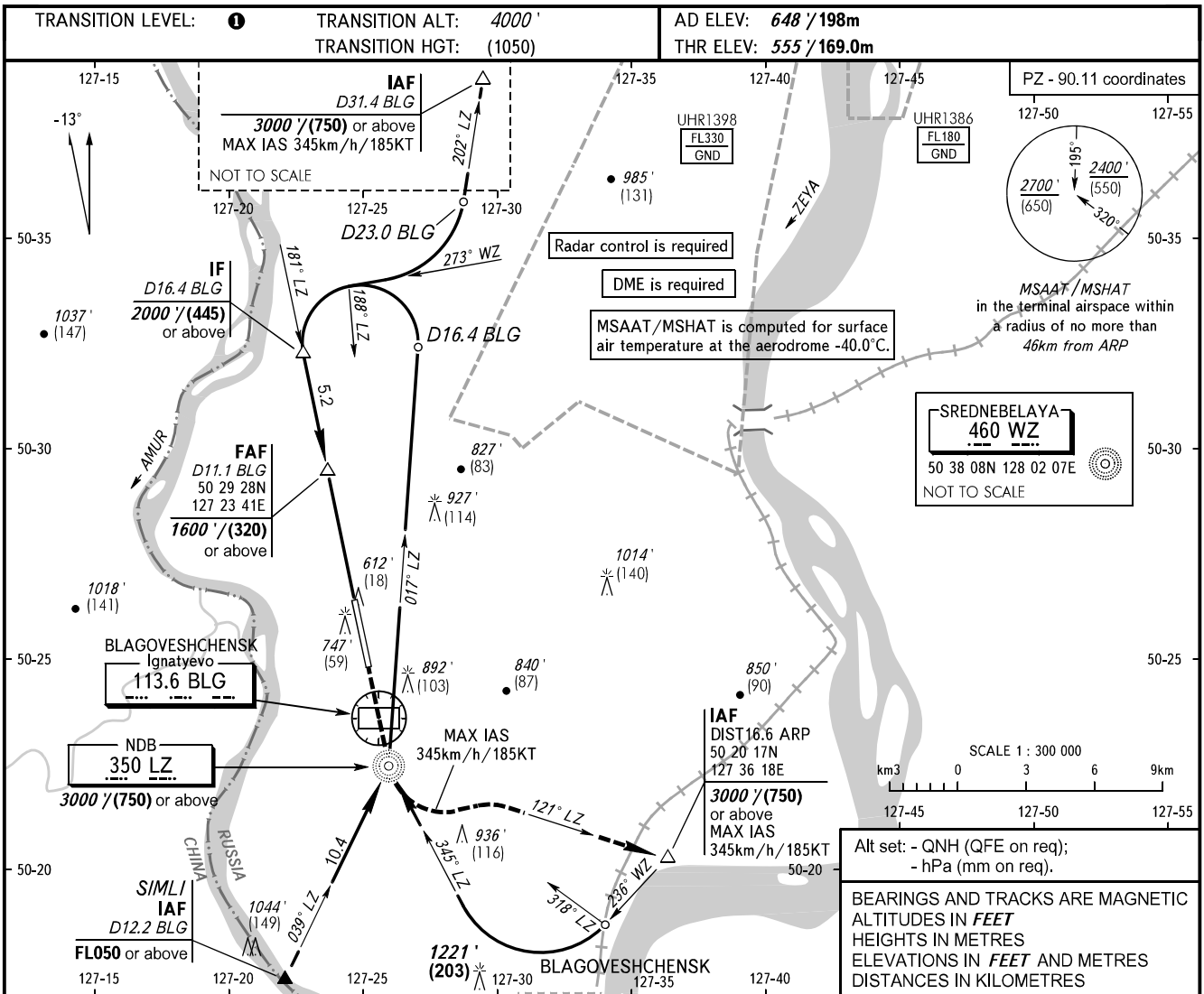


**INSTRUMENT
APPROACH
CHART - ICAO**

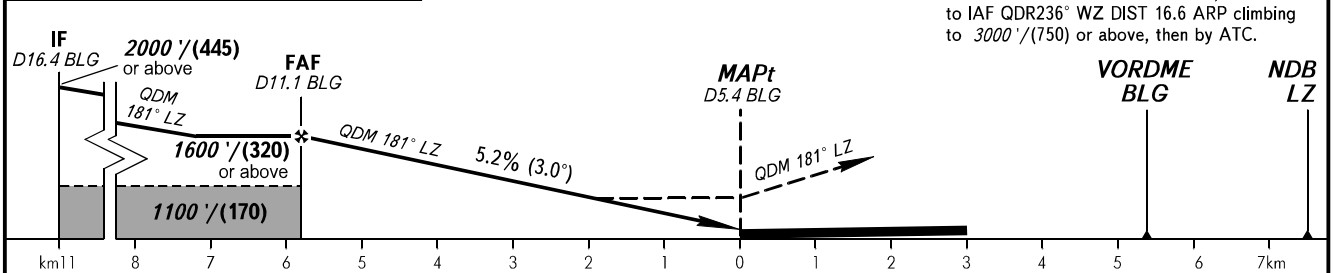
BLAGOVESHCHENSK TOWER **127.200**

**BLAGOVESHCHENSK, RUSSIA
IGNATYEVO
NDB RWY 18**



DME BLG	10.0	8.0
ALTITUDE/HEIGHT	1413' / (262)	1069' / (157)

MISSED APPROACH
Climb straight ahead to NDB LZ, then turn LEFT to establish on QDR 121° LZ, then to IAF QDR 236° WZ DIST 16.6 ARP climbing to 3000' / (750) or above, then by ATC.



OCA(H)	A	B	C	D				
Straight-in	1000' (440') (135)	1000' (440') (135)	1000' (440') (135)	1000' (440') (135)				
Approach								
Circling	1190' (540') (165)	1220' (570') (175)	1330' (680') (210)	1340' (700') (215)				
GROUND SPEED	km/h	150	180	210	240	270	300	330
	kt	81	97	113	130	146	162	178
RATE OF DESCENT	m/s	2.2	2.6	3.0	3.5	3.9	4.3	4.8
	ft/min	427	512	597	682	768	853	938

TRANSITION LEVEL:
- FL050 when QNH is 1013 hPa (760mm mercury column) or above;
- FL060 when QNH is 977 hPa (733mm mercury column) or above, but less than 1013 hPa (760mm mercury column);
- FL070 when QNH is less than 977 hPa (733mm mercury column).

WARNING
FAF - MAPt 5.8km. Timing not authorized for defining MAPt.

Visual manoeuvring to the west of AD is PROHIBITED.

CHANGE: New chart