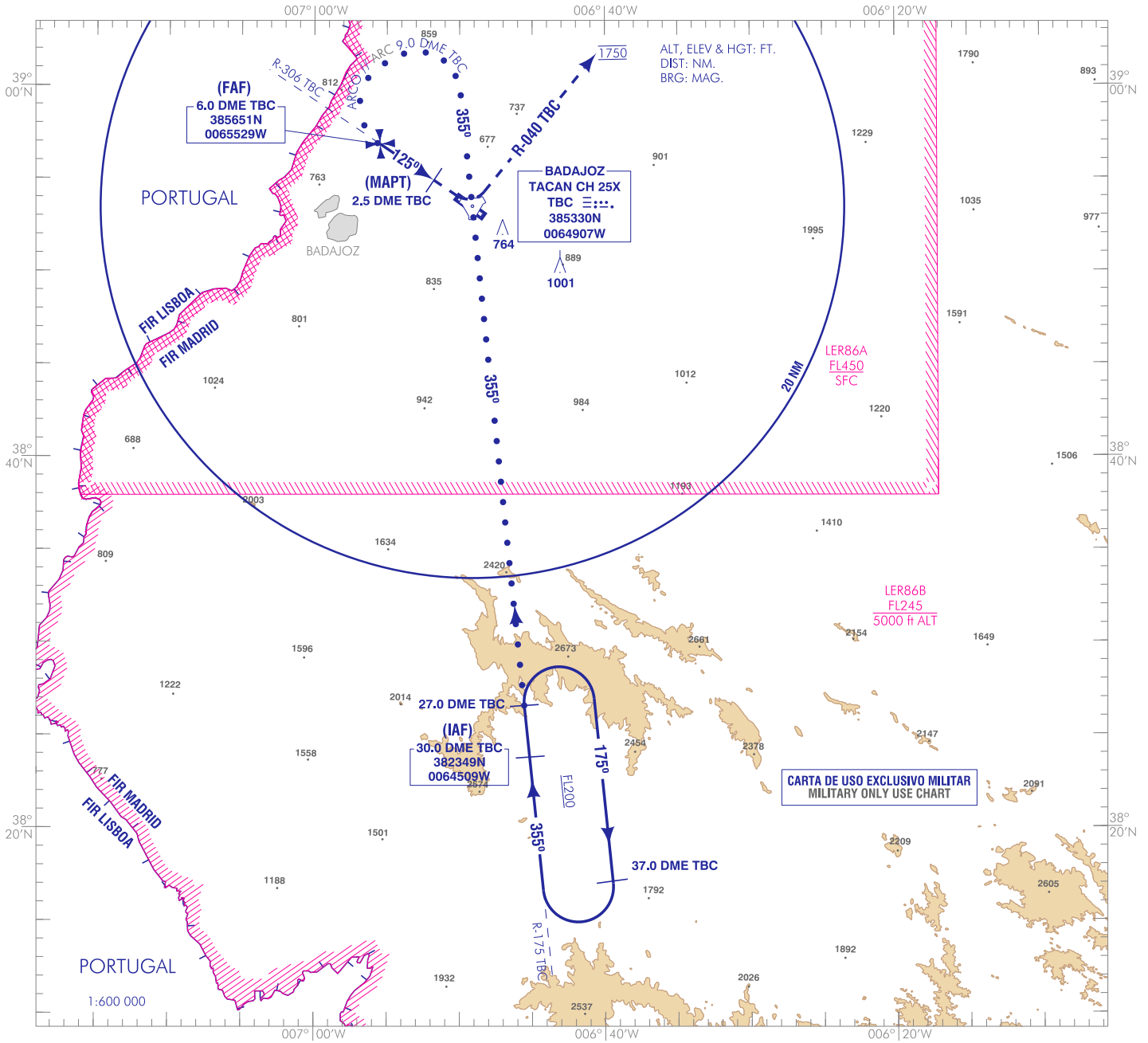


CARTA DE APROXIMACIÓN  
POR INSTRUMENTOS-MIPS

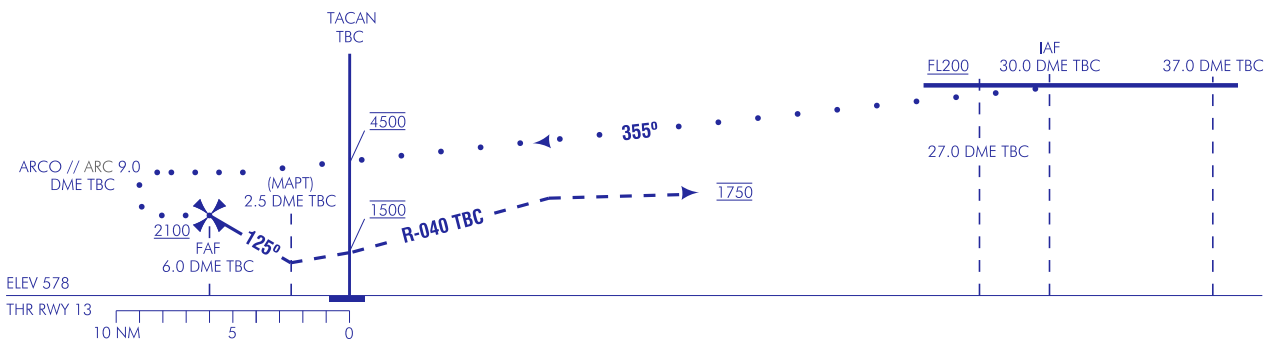
ELEV  
608  
VAR 1°W (2020)

APP 120.555 C  
TWR 122.105 C

BADAJOSZ/Talavera La Real  
HI-TACAN  
RWY 13



**FRUSTRADA:** SUBIR A 1500 DIRECTO AL TACAN TBC. VIRAR A LA IZQUIERDA PARA INTERCEPTAR R-040 TBC SUBIENDO A 1750 Y CONTACTAR CON TWR DENTRO DE 10.0 DME TBC.  
**MISSED APCH:** CLIMB UP TO 1500 DIRECT TO TACAN TBC. TURN LEFT TO INTERCEPT R-040 TBC CLIMBING UP TO 1750 AND CONTACT TWR REMAIN WITHIN 10.0 DME TBC.

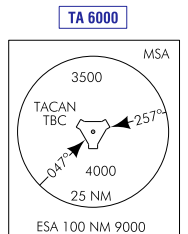


HGT REF ELEV THR RWY 13

CAT	C	D	E
<b>S-TAC-13*</b>	1100/2.0 522 (600-2.0)	1100/2.4 522 (600-2.4)	1160/2.4 582 (600-2.4)
<b>CIRCUITO CIRCLING</b>	1340/3.2 740 (800-3.2)	1340/3.6 740 (800-3.6)	1440/4.4 830 (900-4.4)
* CUANDO HIRL U/S INCREMENTAR VIS EN 0.4 km * WHEN HIRL U/S INCREASE VIS IN 0.4 km			

GS	kt	80	100	120	140	160	180
<b>FAP-THR:</b>	min:s						
<b>FAP-MAPT:</b>	min:s						
<b>ROD:</b>	ft/min						

ALT/HGT DME (TBC) FNA GP U/S												
13	12	11	10	9	8	7	6	5	4	3	2	1



CAMBIOS: DECLINACIÓN MAGNÉTICA, RUMBOS, RADIALES, FRECUENCIAS; RENUMERACIÓN.  
CHANGES: MAGNETIC VARIATION, HEADINGS, RADIALS, FREQUENCIES, RENUMBERING.

**INTENCIONADAMENTE EN BLANCO**  
**INTENTIONALLY BLANK**