

STANDARD DEPARTURE CHART - INSTRUMENT (SID) - ICAO

APP Roma Radar 124.350 (134.200)
AFIS Salerno Aerodrome INFO 119.175

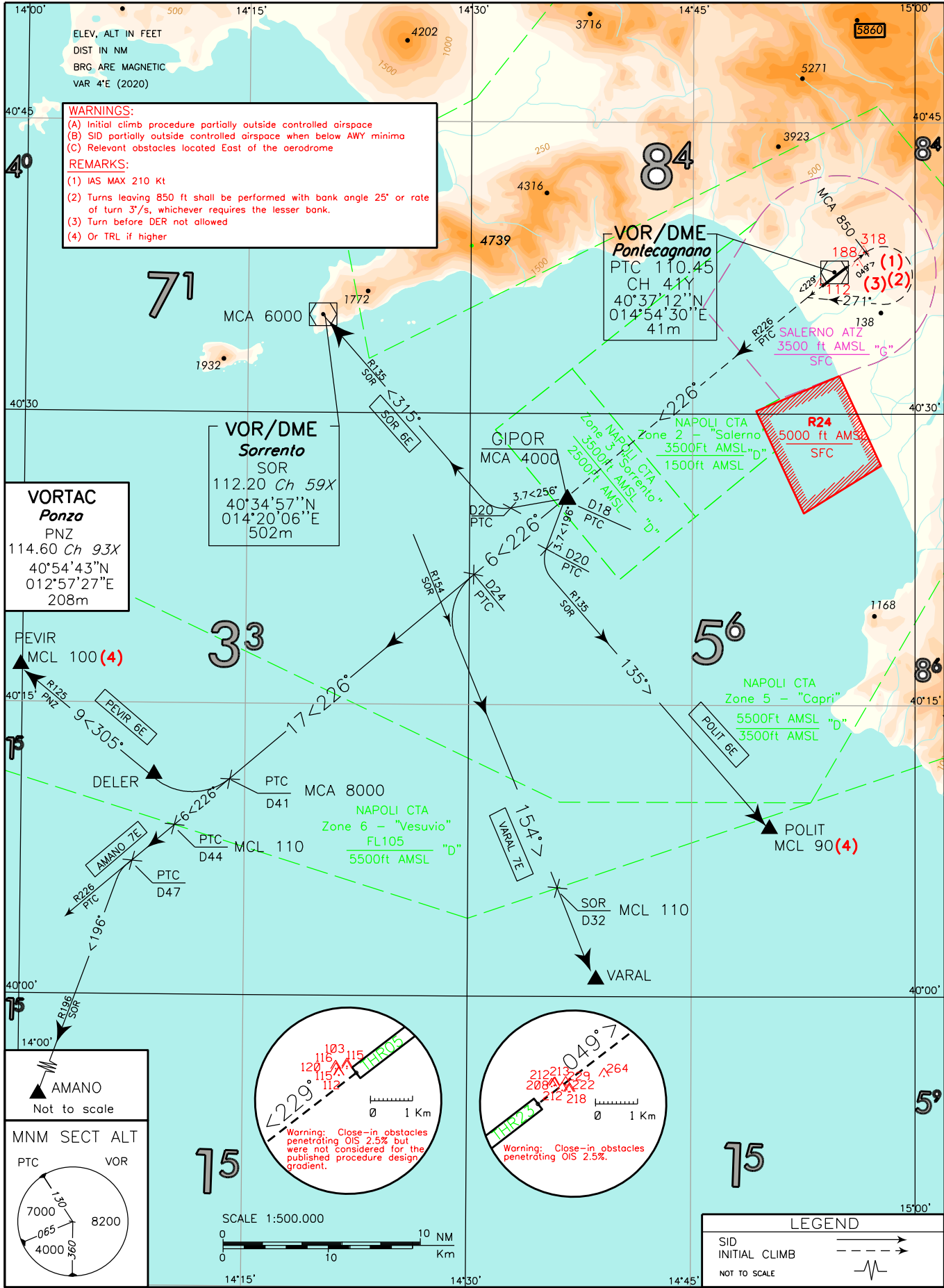
SALERNO/Pontecagnano (LIRI)

SID VOR

AMANO 7E, PEVIR 6E, POLIT 6E
SOR 6E, VARAL 7E

TRANSITION ALT 8000

WARNINGS:
(A) Initial climb procedure partially outside controlled airspace
(B) SID partially outside controlled airspace when below AWY minima
(C) Relevant obstacles located East of the aerodrome
REMARKS:
(1) IAS MAX 210 Kt
(2) Turns leaving 850 ft shall be performed with bank angle 25° or rate of turn 3°/s, whichever requires the lesser bank.
(3) Turn before DER not allowed
(4) Or TRL if higher



CHANGE: AMANO 7E and VARAL 7E SIDs updated.

VORTAC
Ponza
PNZ
114.60 Ch 93X
40°54'43"N
012°57'27"E
208m

VOR/DME
Sorrento
SOR
112.20 Ch 59X
40°34'57"N
014°20'06"E
502m

VOR/DME
Pontecagnano
PTC 110.45
CH 41Y
40°37'12"N
014°54'30"E
41m

SALERNO ATZ
3500 ft AMSL "6"
SFC

R24
5000 ft AMSL
SFC

NAPOLI CTA
Zone 5 - "Capri"
5500ft AMSL "D"
3500ft AMSL

GIPOR
MCA 4000

PEVIR
MCL 100 (4)

AMANO 7E
PTC D47

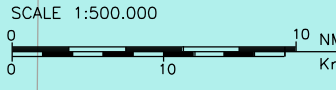
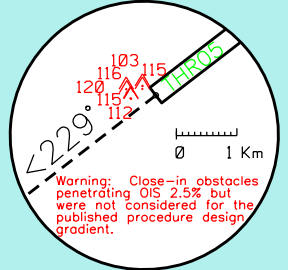
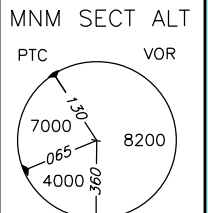
DELER
PTC D41
MCA 8000

AMANO 7E
PTC D44
MCL 110

VARAL 7E
SOR D32
MCL 110

POLIT 6E
MCL 90 (4)

AMANO
Not to scale



LEGEND

SID	→
INITIAL CLIMB	→
NOT TO SCALE	→