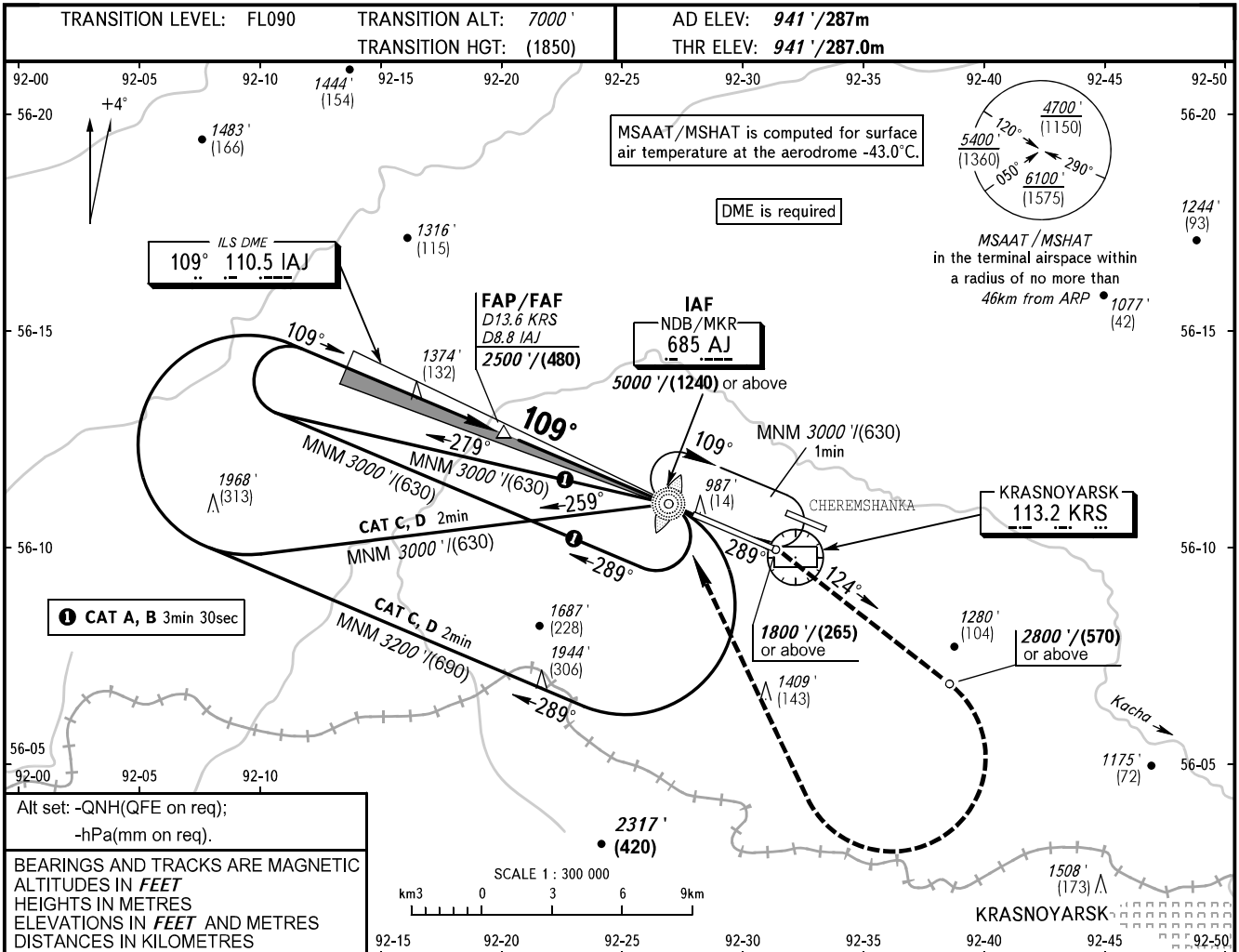


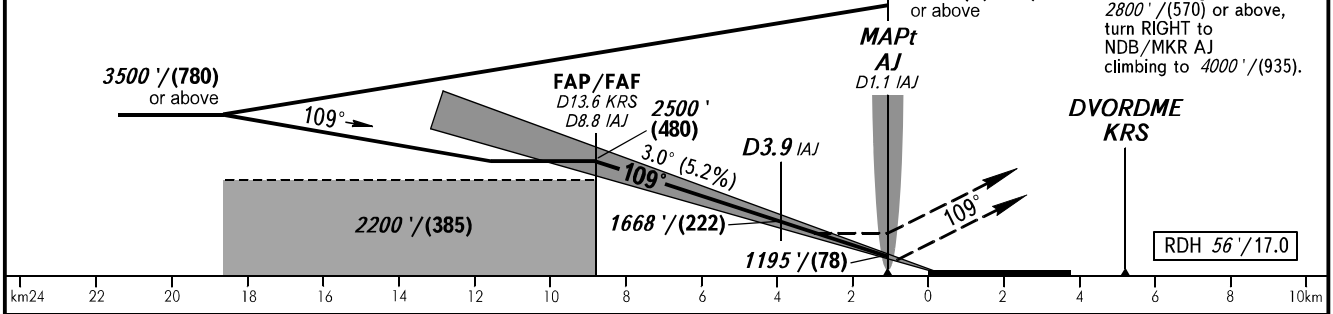
**INSTRUMENT
APPROACH
CHART - ICAO**

**KRASNOYARSK, RUSSIA
KRASNOYARSK
ILS X CAT I/II, LOC X RWY 11**

RADAR	122.000
TOWER	118.300



DME KRS	12.0	10.0	8.0
ALTITUDE/HEIGHT	2246'/(398)	1903'/(294)	1559'/(476)
DME IAJ	8.0	6.0	4.0
ALTITUDE/HEIGHT	2368'/(435)	2023'/(330)	1679'/(225)



OCA(H)		A	B	C	D					
Straight-in	CAT I	1090' (149') (46)	1100' (159') (49)	1108' (167') (51)	1121' (180') (55)					
	CAT II	1007' (60') (19)	1013' (72') (22)	1027' (86') (27)	1041' (100') (31)					
Approach	LOC	1500' (560') (175)	1500' (560') (175)	1500' (560') (175)	1500' (560') (175)					
	Circling	1760' (820') (250)	1810' (870') (270)	2130' (1190') (365)	2190' (1250') (385)					
GROUND SPEED	km/h	150	180	210	240	270	300	330	360	390
	kt	81	97	113	130	146	162	178	194	211
RATE OF DESCENT	m/s	2.2	2.6	3.1	3.5	3.9	4.4	4.8	5.2	5.7
	ft/min	433	512	610	689	768	866	945	1024	1122

MISSED APPROACH
Climb straight ahead to 1800'/(265) or above, then proceed on track 124° climbing to 2800'/(570) or above, turn RIGHT to NDB/MKR AJ climbing to 4000'/(935).

WARNING:
1. RWY of KRASNOYARSK/Chermeshanka AD is located at 1800m north-east of the runway.
2. MAPt at NDB/MKR AJ.
Timing not authorized for defining MAPt.

NOTE
ILS DME IAJ reads zero at RWY 11 THR.

CHANGE: New chart