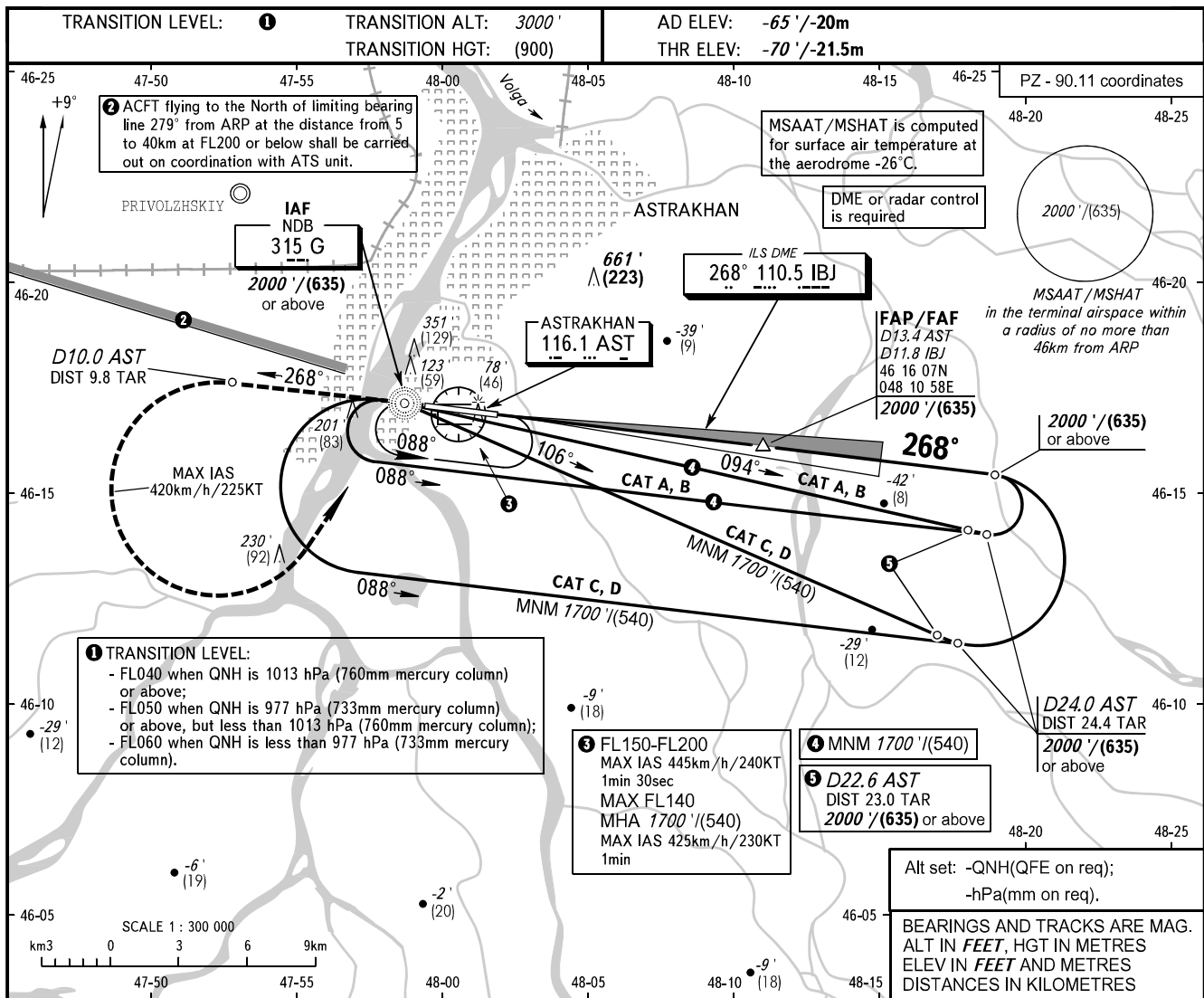


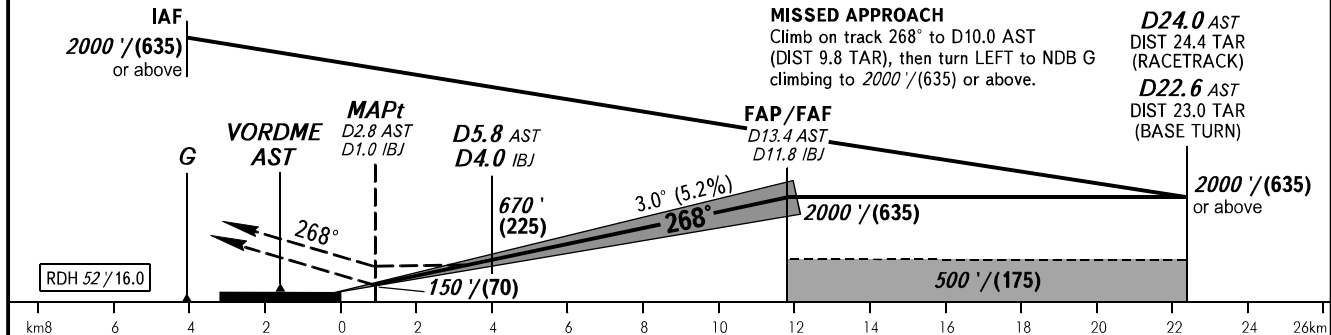
**INSTRUMENT
APPROACH
CHART - ICAO**

RADAR 120.600
TOWER 118.600

ASTRAKHAN, RUSSIA
ASTRAKHAN
ILS X CAT I, LOC X RWY 27



DME IBJ	2.0	4.0	6.0	8.0	10.0
ALTITUDE/HEIGHT	320' / (120)	670' / (225)	1010' / (330)	1350' / (435)	1690' / (540)



OCA(H)		A	B	C	D				
Straight-in Approach	CAT I	130' (200') 39 (60)	130' (200') 39 (60)	130' (200') 39 (60)	130' (200') 39 (60)				
	LOC	280' (350') 85 (110)	280' (350') 85 (110)	280' (350') 85 (110)	280' (350') 85 (110)				
Circling		380' (450') 120 (140)	500' (570') 155 (175)	600' (670') 185 (205)	630' (700') 195 (215)				
GROUND SPEED	km/h	150	180	210	240	270	300	330	360
	kt	81	97	113	130	146	162	178	195
RATE OF DESCENT	m/s	2.2	2.6	3.0	3.5	3.9	4.3	4.8	5.2
	ft / min	427	512	597	682	768	853	938	1024

NOTE:
1. ILS DME IBJ reads zero at RWY 27 THR.
2. TAR distance is indicated from ARP
3. MAPt at D1.0 IBJ (D2.8 AST).
Timing not authorized for defining MAPt.
4. Turn before passing NDB G is PROHIBITED.

WARNING
Visual manoeuvring to the north of AD is PROHIBITED.

276° 079°