

SHEREMETYEVO TOWER	118.700	120.700	131.500	119.300
SHEREMETYEVO RADAR	118.100	120.675	122.700	126.600
MOSCOW APPROACH	127.200	128.000	127.700	131.200

### BUKUB 3F, OLOPI 3F, OLOPI 3G (By ATC)

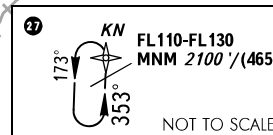
**OLOPI 3W:** OLOPI-RIFMA-OKPEN-POZUK-EE828-SURZA-LIFAS-SOMAG-ULKEK-MAZIL-EE827-KEZVU.  
Route is designated only for calculation of fuel to destination.

MSAAT/MSHAT is computed for surface air temperature at the aerodrome -31°C.

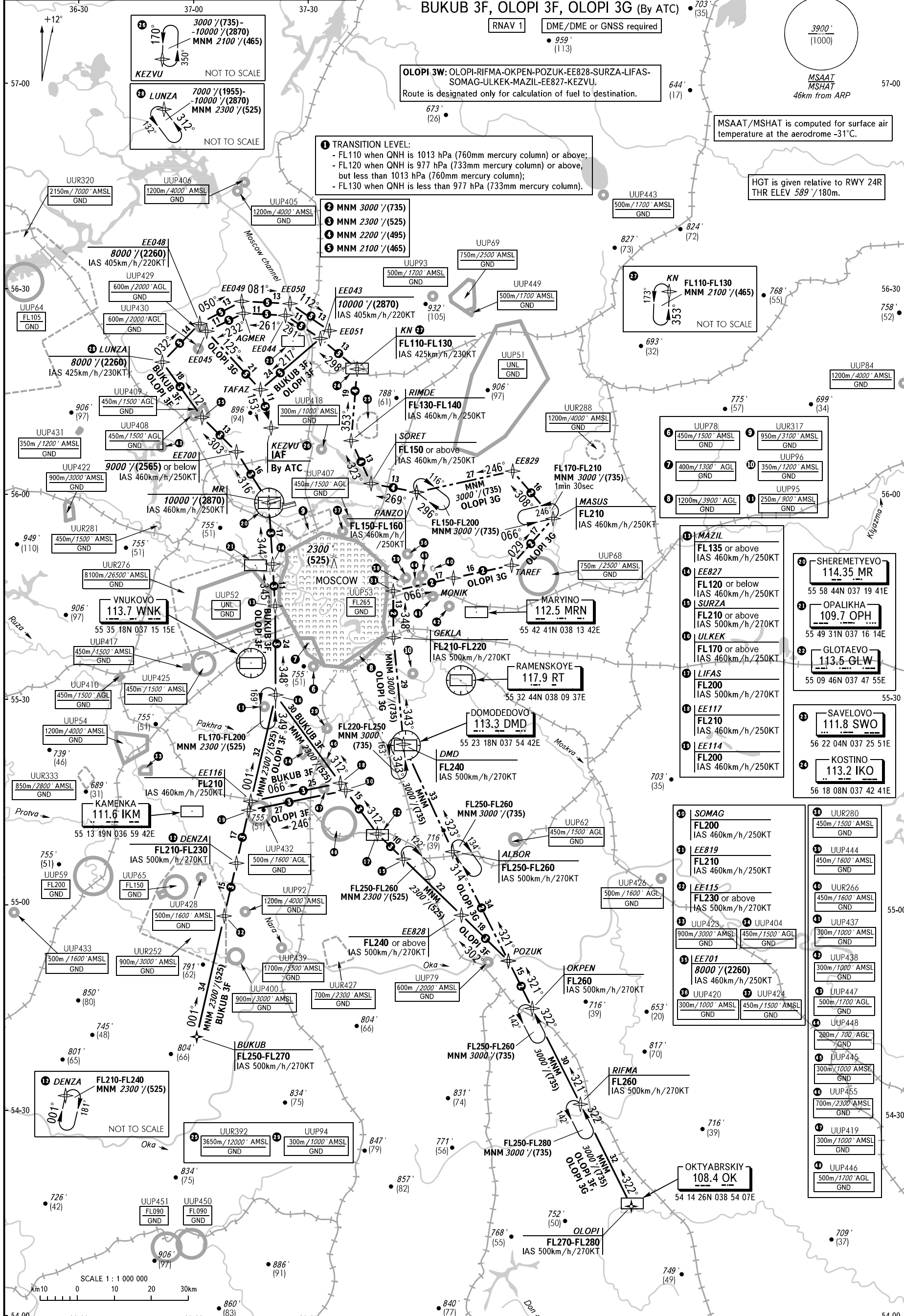
HGT is given relative to RWY 24R THR ELEV 589'/180m.

- 1** TRANSITION LEVEL:  
- FL110 when QNH is 1013 hPa (760mm mercury column) or above;  
- FL120 when QNH is 977 hPa (733mm mercury column) or above, but less than 1013 hPa (760mm mercury column);  
- FL130 when QNH is less than 977 hPa (733mm mercury column).

- 2** MNM 3000'/(735)  
**3** MNM 2300'/(525)  
**4** MNM 2200'/(495)  
**5** MNM 2100'/(465)



NOT TO SCALE



BEARINGS AND TRACKS ARE MAGNETIC  
ALTITUDES IN FEET  
HEIGHTS IN METRES  
ELEVATIONS IN FEET AND METRES  
DISTANCES IN KILOMETRES

Alt set: -QNH(QFE on req);  
-hPa(mm on req).

CHANGE: UUP65, UUP69, UUP445, UUP446, UUP447, UUP448, UUP449, UUP450, UUP451, UUP455