

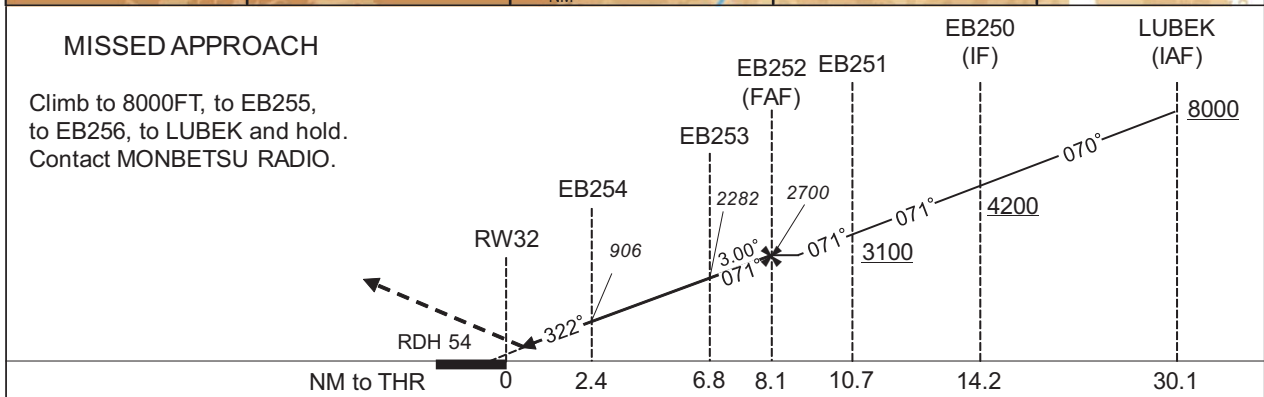
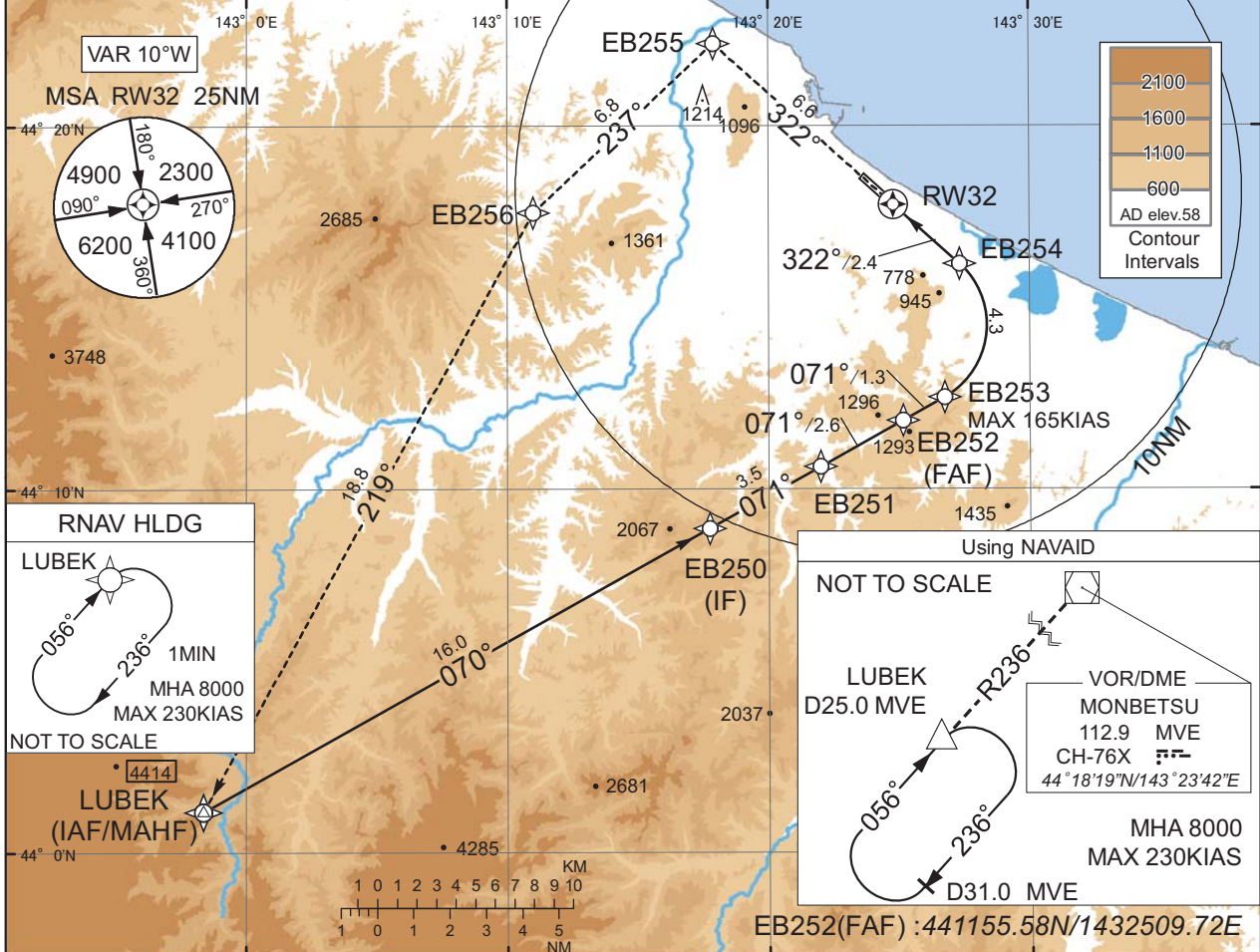
INSTRUMENT APPROACH CHART

RJEB / MONBETSU

RNP RWY32(AR)

TOKYO CONTROL 127.5 - 255.2 134.25 - 260.4	RNP AR RF required.	MONBETSU RADIO 118.15 AFIS provided by New Chitose Airport Office	NO RADAR
--	------------------------	--	----------

For uncompensated Baro-VNAV systems, procedure not authorized below -20°C / above 45°C



Missed APCH climb gradient MNM 4.0%

CAT	THR elev. 72		AD elev. 58	
	RNP 0.14		RNP 0.30	
	DA(H)	RVR/CMV	DA(H)	RVR/CMV
A	-	-	-	-
B	-	-	-	-
C	372(300)	1000	606(534)	1200
D	-	1400	-	1600

Authorization Required

MINIMA with Missed APCH climb gradient of 2.5% are not established.

CHANGE : ATC call sign and FREQ.

INSTRUMENT APPROACH CHART

RJEB / MONBETSU

RNP RWY32(AR)

Coding Table

Serial Number	Path Descriptor	Waypoint Identifier	Fly Over	Course °M(°T)	Magnetic Variation	Distance (NM)	Turn Direction	Altitude (FT)	Speed (KIAS)	VPA/ RDH (°/FT)	RNP Value
001	IF	LUBEK	-	-	-9.8	-	-	+8000	-	-	-
002	TF	EB250	-	070 (060.6)	-9.8	16.0	-	+4200	-	-	1.0
003	TF	EB251	-	071 (060.8)	-9.8	3.5	-	+3100	-	-	1.0
004	TF	EB252	-	071 (060.8)	-9.8	2.6	-	2700	-	-	1.0
005	TF	EB253	-	071 (060.9)	-9.8	1.3	-	2282	-165	-3.00	0.14 0.30
006	RF Center: EBRF3 r=2.27NM	EB254	-	-	-9.8	4.3	L	906	-	-3.00	0.14 0.30
007	TF	RW32	Y	322 (312.1)	-9.8	2.4	-	126	-	-3.00/54	0.14 0.30
008	TF	EB255	-	322 (312.0)	-9.8	6.6	-	-	-	-	1.0
009	TF	EB256	-	237 (226.8)	-9.8	6.8	-	-	-	-	1.0
010	TF	LUBEK	-	219 (208.8)	-9.8	18.8	-	8000	-	-	1.0

Path	Waypoint Identifier	Inbound Course °M(°T)	Magnetic Variation	Outbound Time (MIN)	Turn Direction	Minimum Altitude (FT)	Maximum Altitude (FT)	Speed (KIAS)	RNP Value
Hold	LUBEK	056 (046.6)	-9.8	1.0 (-14000)	R	8000	FL140	-230 (-14000)	1.0

Waypoint Coordinates

Waypoint Identifier	Coordinates	RF Arc Center Identifier	Coordinates
LUBEK	440108.77N / 1425822.82E	EBRF3	441432.89N / 1432513.59E
EB250	440857.66N / 1431745.13E		
EB251	441039.77N / 1432200.05E		
EB252	441155.58N / 1432509.72E		
EB253	441233.80N / 1432645.48E		
EB254	441614.19N / 1432720.26E		
RW32	441752.44N / 1432448.06E		
EB255	442218.71N / 1431754.45E		
EB256	441739.47N / 1431100.00E		

CHANGE : VAR. PROC course. RNAV HLDG established. Missed APCH course.