

MERIDIAN, MISSISSIPPI

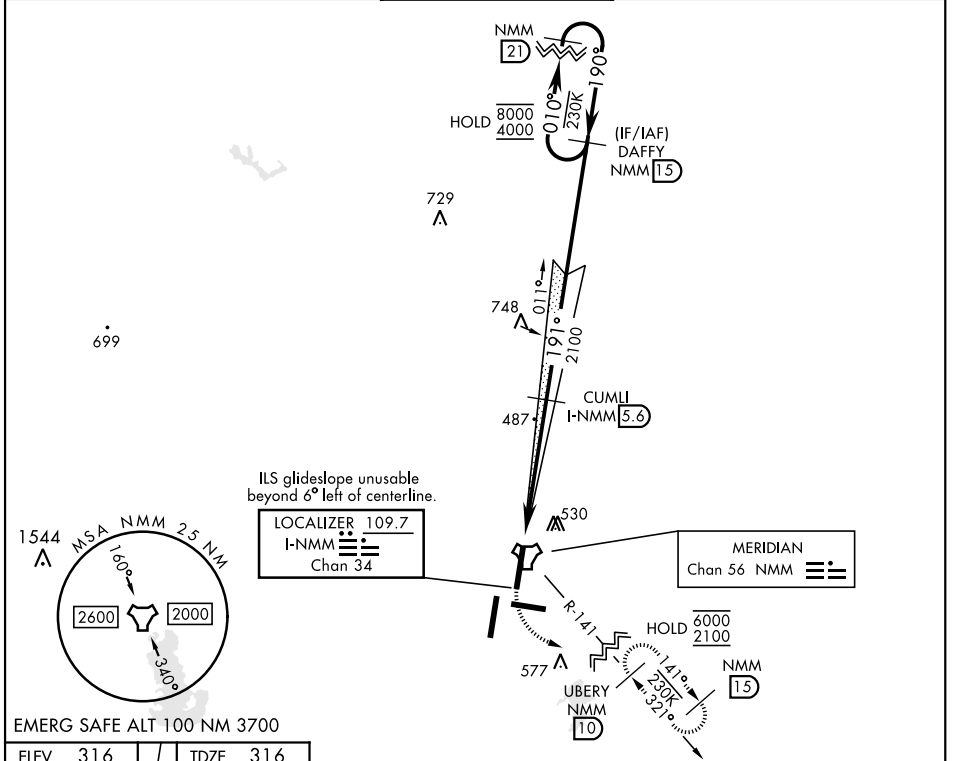
ILS W or LOC/DME W RWY 19L

LOC/DME I-NMM 109.7 Chan 34	APCH CRS 191°	Rwy Ldg TDZE Arprt Elev 8000 316 316
---	-------------------------	--

AL-5079 [USN]

MERIDIAN NAS (MC CAIN FIELD) (KNMM)

RADAR required		MALSRL	MISSED APPROACH: Climb to 800, then climbing left turn to 2100 to intercept NMM R-141 to UBERY and hold.		
* When ALS inop, increase vis to ¾ mile. ** When ALS inop, increase CAT AB vis to 1 mile, CAT CD vis to 1½ miles.					
ATIS ★ 290.525	APP CON 120.95 276.4	NAVY MC CAIN TOWER ★ 126.2 340.2	GND CON 336.4	CINC DEL 301.0	ASR/PAR



ELEV 316	TDZE 316	800	2100	UBERY NMM 10	DAFFY NMM 15	NMM 21
TACAN		I-NMM 1.4		2100		010°
LOC DME		FAXAR I-NMM 0.7		191°		190°
0.5		4.9 NM		2100		8000 4000
CATEGORY	A	B	C	D		
S-ILS 19L *	516-½		200	(200-½)		
S-LOC 19L **	740-½	424 (500-½)	740-¾	424 (500-¾)		
CIRCLING	820-1 504 (600-1)	840-1 524 (600-1)	840-1½ 524 (600-1½)	880-2 564 (600-2)		

GS 3.00°
TCH 49

HIRL all rwys
Wave-Off Lgt Rwy 1L, 19L

MERIDIAN, MISSISSIPPI

32° 33' N-88° 33' W

MERIDIAN NAS (MC CAIN FIELD) (KNMM)

Orig 01DEC22

ILS W or LOC/DME W RWY 19L

SC-4, 20 MAR 2025 to 17 APR 2025

SC-4, 20 MAR 2025 to 17 APR 2025