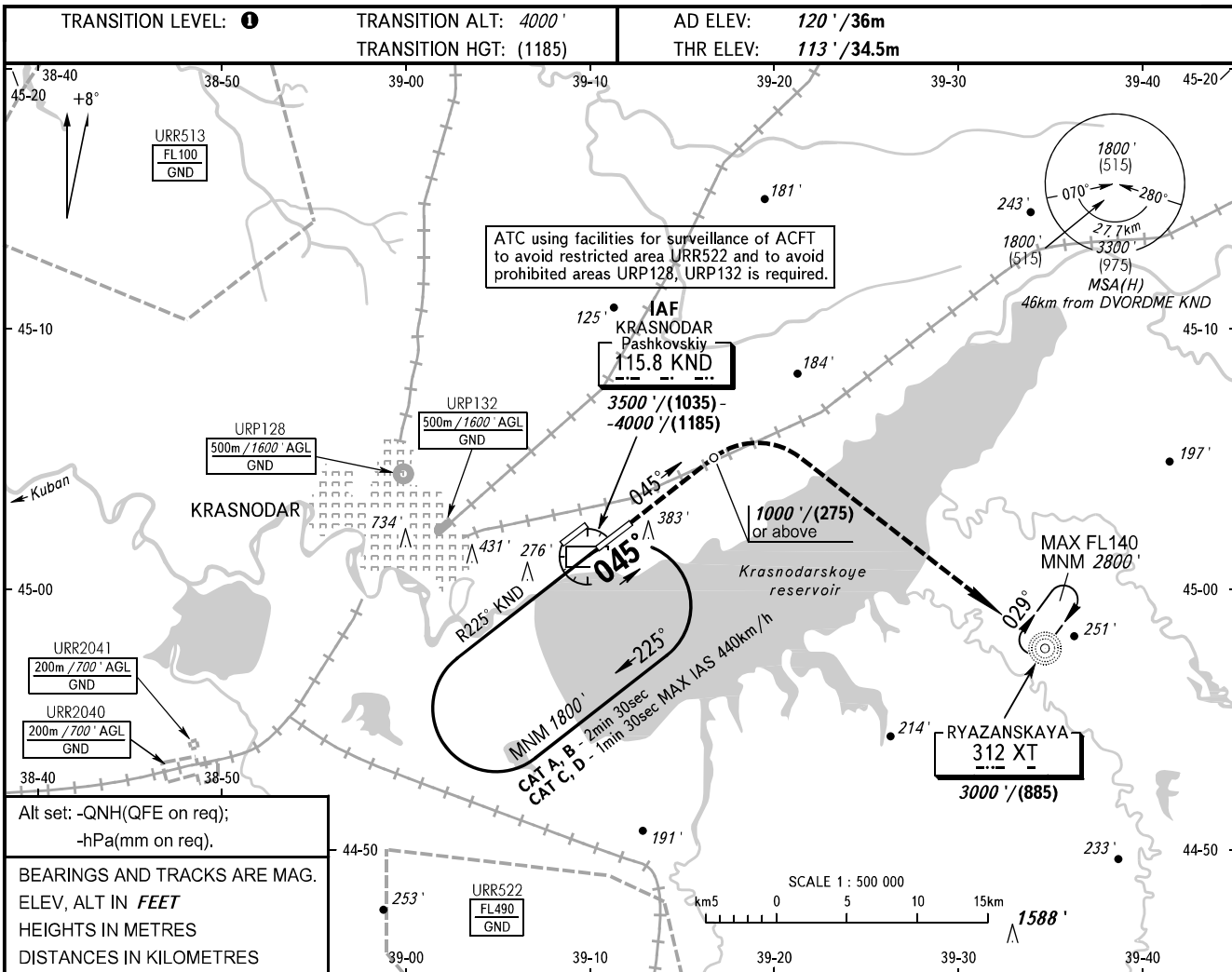


**INSTRUMENT
APPROACH
CHART - ICAO**

RADAR	121.300
TOWER	118.200

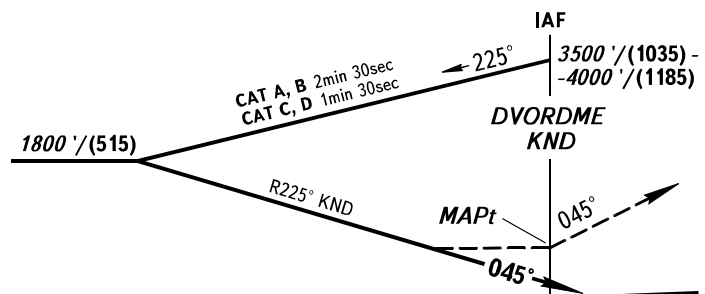
**KRASNODAR, RUSSIA
PASHKOVSKIY
DVOR X RWY 05R**



Alt set: -QNH(QFE on req);
-hPa(mm on req).

BEARINGS AND TRACKS ARE MAG.
ELEV, ALT IN **FEET**
HEIGHTS IN METRES
DISTANCES IN KILOMETRES

MISSED APPROACH
Climb on track 045° to 1000' / (275) or above, turn RIGHT to NDB XT climbing to 3000' / (885).



OCA(H)		A	B	C	D
Straight-in	Approach	580' (460')	580' (460')	580' (460')	580' (460')
	Circling	680' (560')	680' (560')	780' (660')	830' (710')

1 TRANSITION LEVEL:
- FL060 when QNH is 977 hPa (733mm mercury column) or above;
- FL070 when QNH is 941 hPa (706mm mercury column) or above, but less than 977 hPa (733mm mercury column).

NOTE:
1. MAPt at DVORDME KND. Timing not authorized for defining MAPt.
2. Turn before passing MAPt is PROHIBITED.
3. Wind shear is expected.

CHANGE: HLDG