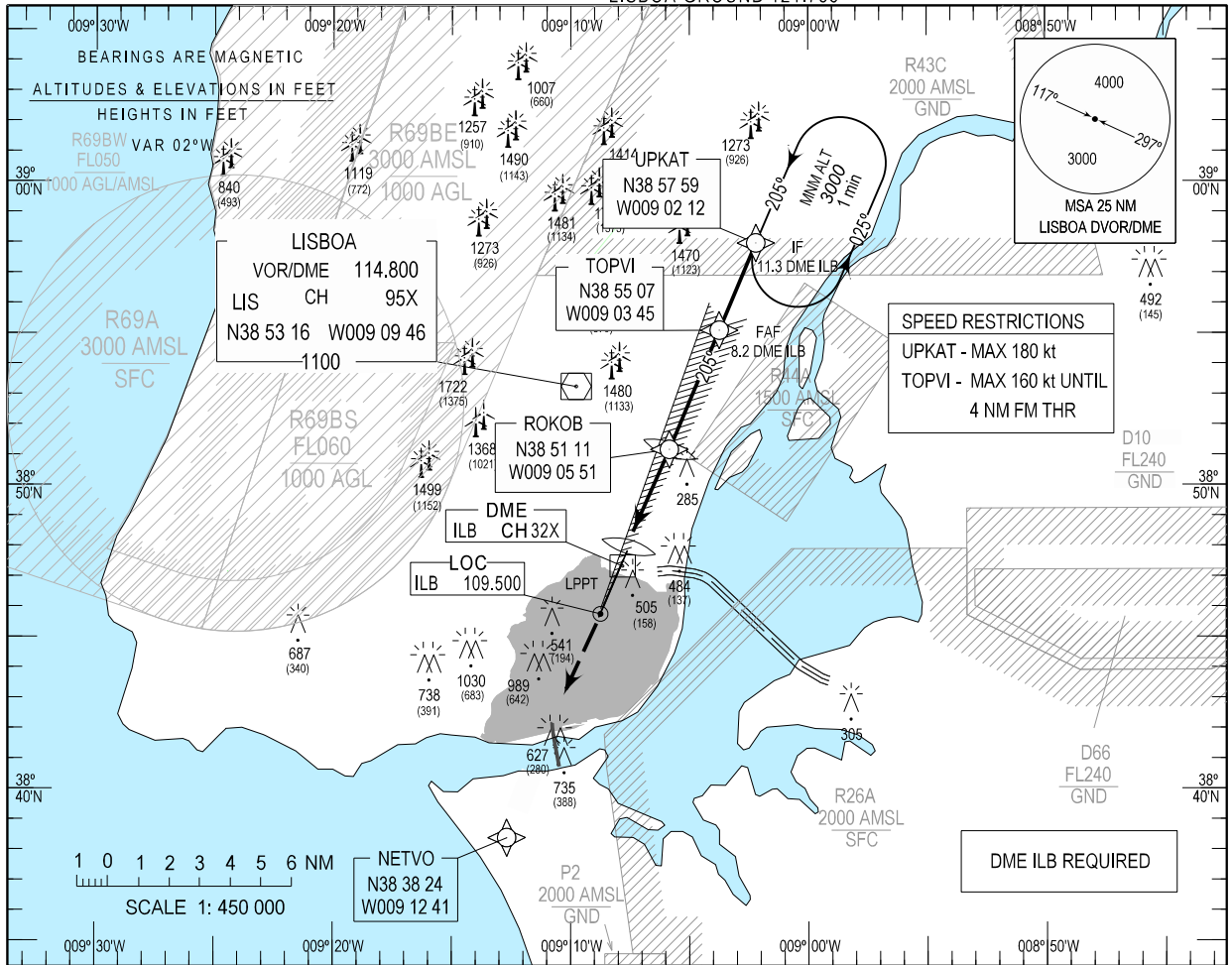


**INSTRUMENT
APPROACH
CHART - ICAO**

AD ELEV 355 ft
HEIGHTS RELATED
THR RWY 20 - ELEV 347 ft

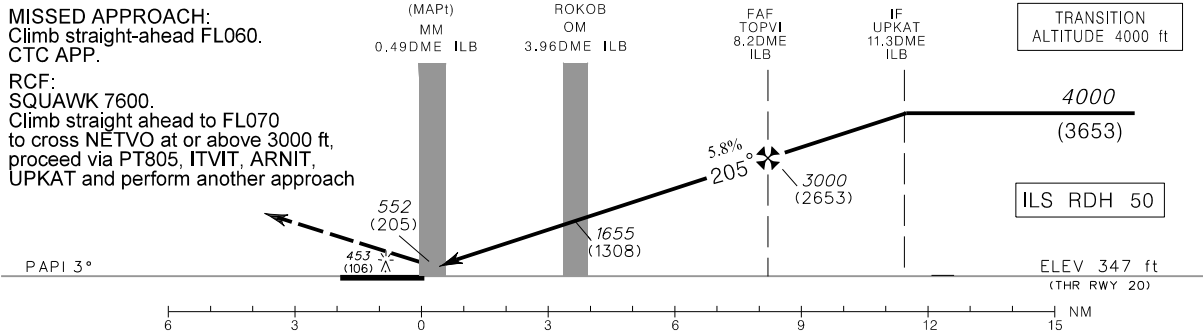
LISBOA ARR INFORMATION 124.155
LISBOA APPROACH 119.105
LISBOA ARRIVAL 125.130
LISBOA TOWER 118.105
LISBOA GROUND 121.755

LISBOA
Humberto Delgado (LPPT)
LOC RWY 20



MISSED APPROACH:
Climb straight-ahead FL060.
CTC APP.

RCF:
SQUAWK 7600.
Climb straight ahead to FL070
to cross NETVO at or above 3000 ft,
proceed via PT805, ITVIT, ARNIT,
UPKAT and perform another approach



	OCA (H)			
	CAT A	CAT B	CAT C	CAT D
LOC	740 (400)			
CIRCLING	1500		1580	

Speed	kt	80	100	120	140	160	180	200
FAF - THR (6NM)	min:s	4:30	3:30	3:00	2:34	2:15	2:00	1:48
Rate of descent (5.8%)	ft/min	470	590	700	820	940	1060	1170

DME ILB	6	5	4	3	2	1
ALTITUDE (HEIGHT)	2520 (2170)	2160 (1810)	1810 (1460)	1460 (1110)	1110 (760)	760 (410)

DME READING REFERS TO THE THR RWY 20

New procedure.

THIS PAGE INTENTIONALLY LEFT BLANK