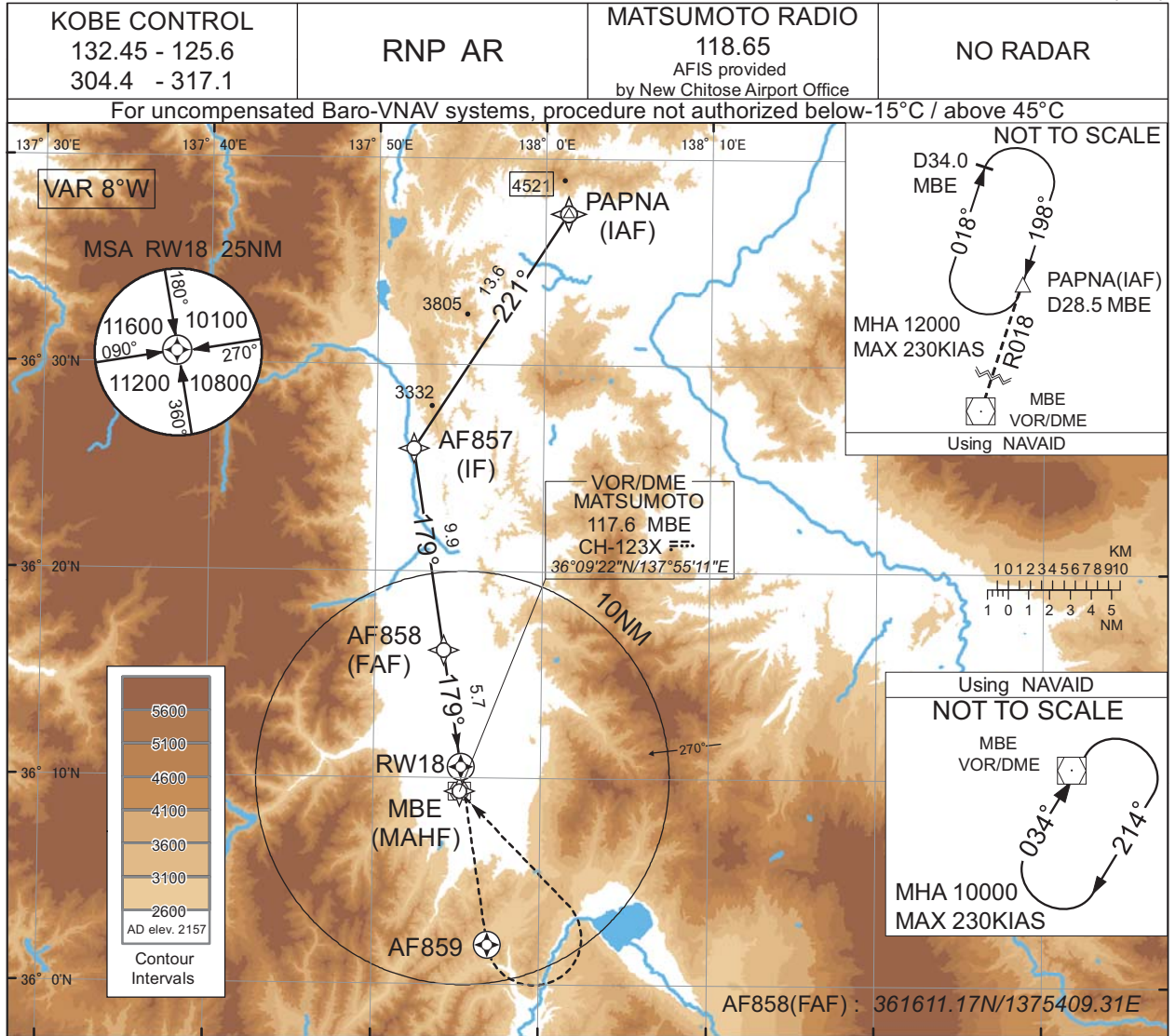


INSTRUMENT APPROACH CHART

RJAF / MATSUMOTO

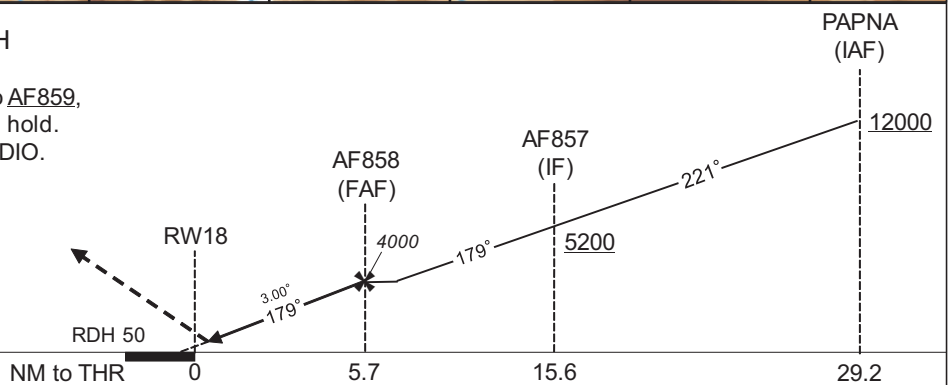
RNP Y RWY18(AR)



CHANGE : ATC call sign (TOKYO CONTROL → KOBE CONTROL).

MISSED APPROACH

Climb to 10000FT, direct to AF859, turn left, direct to MBE and hold. Contact MATSUMOTO RADIO.



Misssed APCH climb gradient MNM 7.0%

CAT	THR elev. 2132		AD elev. 2157	
	RNP 0.20		RNP 0.30	
	DA(H)	CMV	DA(H)	CMV
A	-	-	-	-
B	-	-	-	-
C	2432(300)	1000	2448(316)	1000
D	-	-	-	-

**Authorization Required**

MINIMA with Missed APCH climb gradient of 2.5% are not established.

## INSTRUMENT APPROACH CHART

RJAF / MATSUMOTO

RNP Y RWY18(AR)

Coding Table

Serial Number	Path Descriptor	Waypoint Identifier	Fly Over	Course °M(°T)	Magnetic Variation	Distance (NM)	Turn Direction	Altitude (FT)	Speed (KIAS)	VPA/RDH (°/FT)	RNP Value
001	IF	PAPNA	-	-	-8.2	-	-	+12000	-	-	-
002	TF	AF857	-	221 (212.8)	-8.2	13.6	-	+5200	-	-	1.0
003	TF	AF858	-	179 (171.0)	-8.2	9.9	-	4000	-	-	1.0
004	TF	RW18	Y	179 (171.1)	-8.2	5.7	-	2182	-	-3.00/50	0.2 0.3
005	DF	AF859	Y	-	-8.2	-	-	-	-	-	1.0
006	DF	MBE	-	-	-8.2	-	L	10000	-	-	1.0

Waypoint Coordinates

Waypoint Identifier	Coordinates
PAPNA	363721.74N / 1380122.92E
AF857	362557.23N / 1375214.72E
AF858	361611.17N / 1375409.31E
RW18	361032.37N / 1375515.37E
AF859	360155.80N / 1375655.84E
MBE	360921.51N / 1375511.34E

CHANGE : PROC renamed.