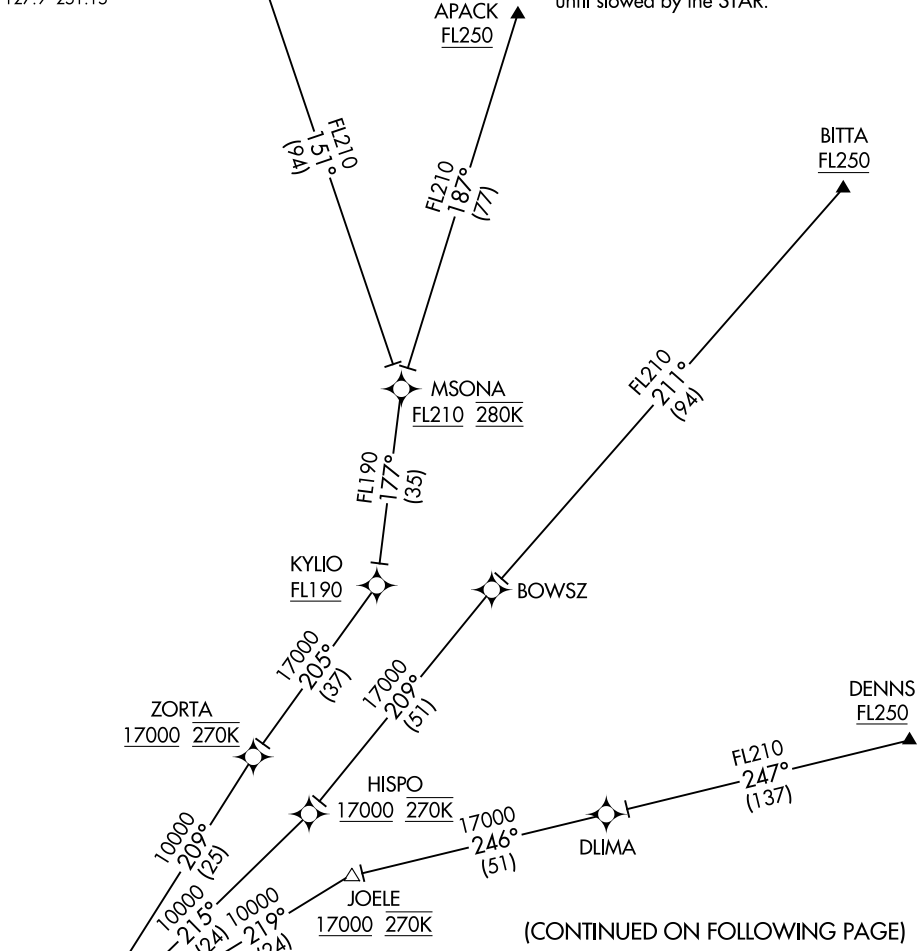


INOYI ONE ARRIVAL (RNAV) Transition Routes

HCF CENTER
127.6 291.6 (APACK, ZIGIE)
126.6 284.6 (BITTA, DENNS)
HONOLULU TOWER
118.1 257.8
123.9 273.575 (Rwy 8R/26L)
D-ATIS
127.9 251.15

NOTE: RADAR required.
NOTE: RNAV 1.
NOTE: GPS required.
NOTE: Turbojet and turboprop aircraft only.
NOTE: Turbojet aircraft descend via mach number until transition to 280K. Maintain 280K until slowed by the STAR.



(CONTINUED ON FOLLOWING PAGE)

- APACK TRANSITION (APACK.INOY11)
- BITTA TRANSITION (BITTA.INOY11)
- DENNS TRANSITION (DENNS.INOY11)
- JOELE TRANSITION (JOELE.INOY11)
- ZIGIE TRANSITION (ZIGIE.INOY11)

See following page for Arrival Routes.

NOTE: Chart not to scale.

PAC, 20 FEB 2025 to 17 APR 2025

PAC, 20 FEB 2025 to 17 APR 2025

INOYI ONE ARRIVAL (RNAV) Transition Routes