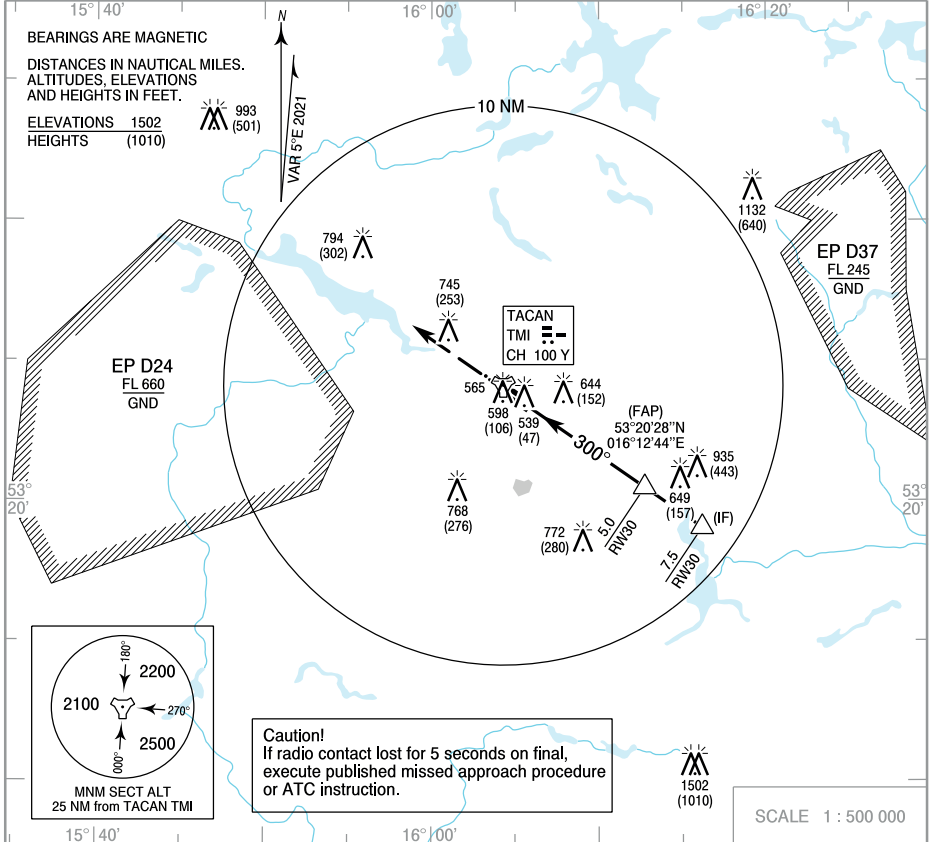


**INSTRUMENT  
APPROACH  
CHART - ICAO**

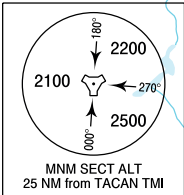
AERODROME ELEV 495 ft  
THR RWY 30 ELEV 492 ft  
HEIGHTS RELATED TO THR RWY 30

Mirolawiec PRECISION 118.575, 234.075  
Mirolawiec APPROACH 126.575, 234.875  
Mirolawiec TOWER 128.475, 264.875

**MIROSLAWIEC  
PAR  
RWY 30 (CAT A/B/C/D/E)**



Correction: Obstacle changed.



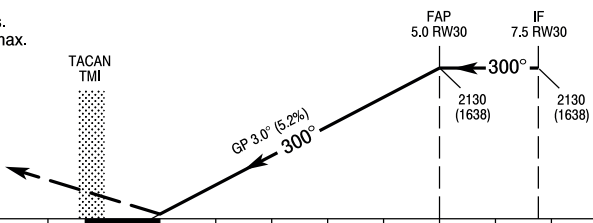
**Caution!**  
If radio contact lost for 5 seconds on final,  
execute published missed approach procedure  
or ATC instruction.

SCALE 1 : 500 000

**MISSED APPROACH**

Climb straight ahead  
to 1500 (1008),  
then turn right on course 120°  
climbing to 2130 (1638)  
and follow ATC instructions.  
Turn limited to 230 kt IAS max.

TRANSITION ALTITUDE 6500



Cat. of ACFT	OCA (OCH)					Distance FAP - RW30 5.0 NM						
	A	B	C	D	E	Speed kt	70	100	135	170	200	230
PAR	742 (250)	742 (250)	742 (250)	742 (250)	742 (250)	Time min : s	4 : 15	3 : 00	2 : 15	1 : 45	1 : 30	1 : 20
Straight-in						Rate of descent ft / min	370	530	710	890	1050	1210
Circling (OCH AAL)	945 (450)	1045 (550)	1145 (650)	1195 (700)	1435 (940)	Dist. to RW30	5.0	4.0	3.0	2.0	1.0	0.6
						Altitude	2130	1815	1500	1185	870	742