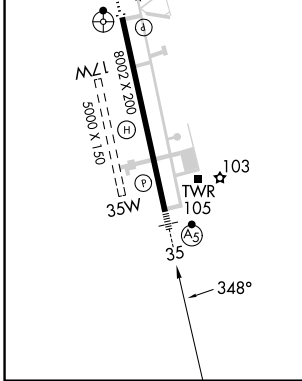
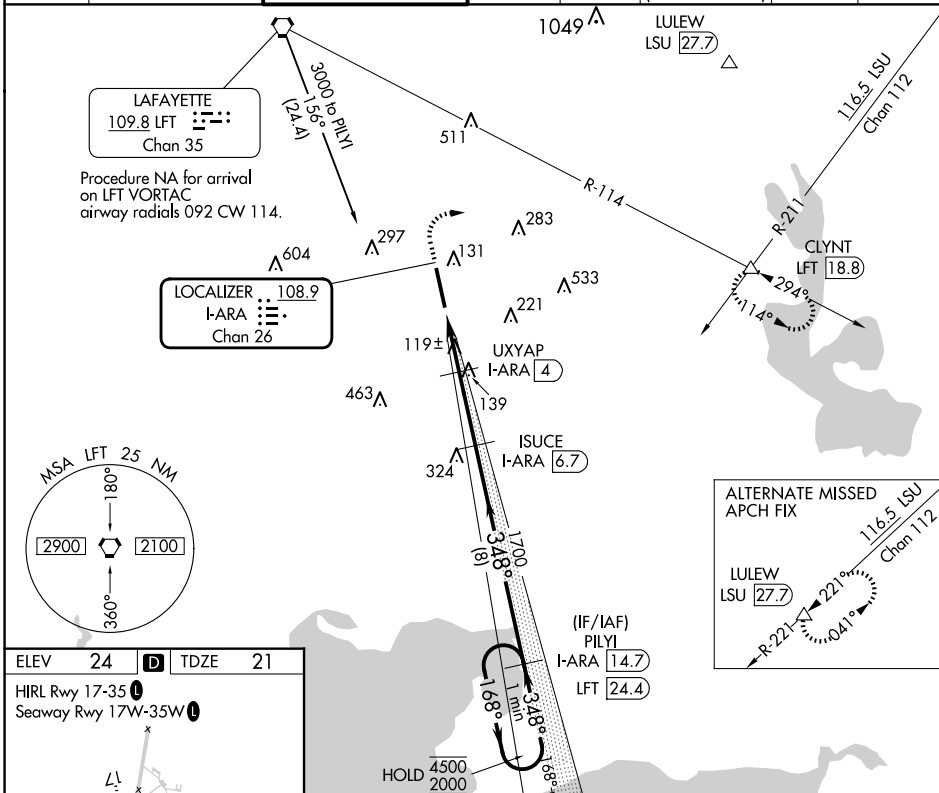


LOC/DME I-ARA 108.9 Chan 26	APP CRS 348°	Rwy Idg 8002 TDZE 21 Apt Elev 24
---	------------------------	---

ILS or LOC RWY 35

ACADIANA RGNL (A.R.A.)

DME required for procedure entry. DME required for LOC only.					MALSR AS	MISSED APPROACH: Climb to 800 then climbing right turn to 2000 on heading 080° and LFT R-114 to CLYNT INT/LFT 18.8 DME and hold.		
⚠ Circling NA to Rwy's 17W and 35W. For inop ALS increase S-ILS 35 Cat E visibility to 3/4 SM and S-LOC 35 Cats C/D/E visibility to 1 1/8 SM.								
ASOS 133.325	LAFAYETTE APP CON* 121.1 268.7	ACADIANA TOWER* 125.0 (CTAF) 239.3	GND CON 121.7	CLNC DEL 121.7	CLNC DEL 118.05 (when twr closed)	UNICOM 122.95	122.7	



ELEV 24	TDZE 21	HIRL Rwy 17-35 Seaway Rwy 17W-35W	
800	2000	LFT R-114	CLYNT
↑ hdg 080°		ISUCE I-ARA 1700 [6.7]	PLYI I-ARA 14.7 LFT 24.4
*LOC only.		UXYAP I-ARA 4	ISUCE I-ARA 1700
I-ARA 1.6	*I-ARA 2.6	UXYAP I-ARA 4	ISUCE I-ARA 1700
1 NM		1.4 NM	2.7 NM
168°		348°	348°
4500		2000	2000
One Minute Holding Pattern		GS 3.00° TCH 5T	
CATEGORY	A	B	C
S-ILS 35	221-1/2 200 (200-1/2)		
S-LOC 35	440-3/4 419 (500-3/4)		
CIRCLING	440-1 416 (500-1)	480-1 456 (500-1)	600-1 576 (600-1)
	680-2 656 (700-2)	900-3 876 (900-3)	

SC-4, 20 MAR 2025 to 17 APR 2025

SC-4, 20 MAR 2025 to 17 APR 2025