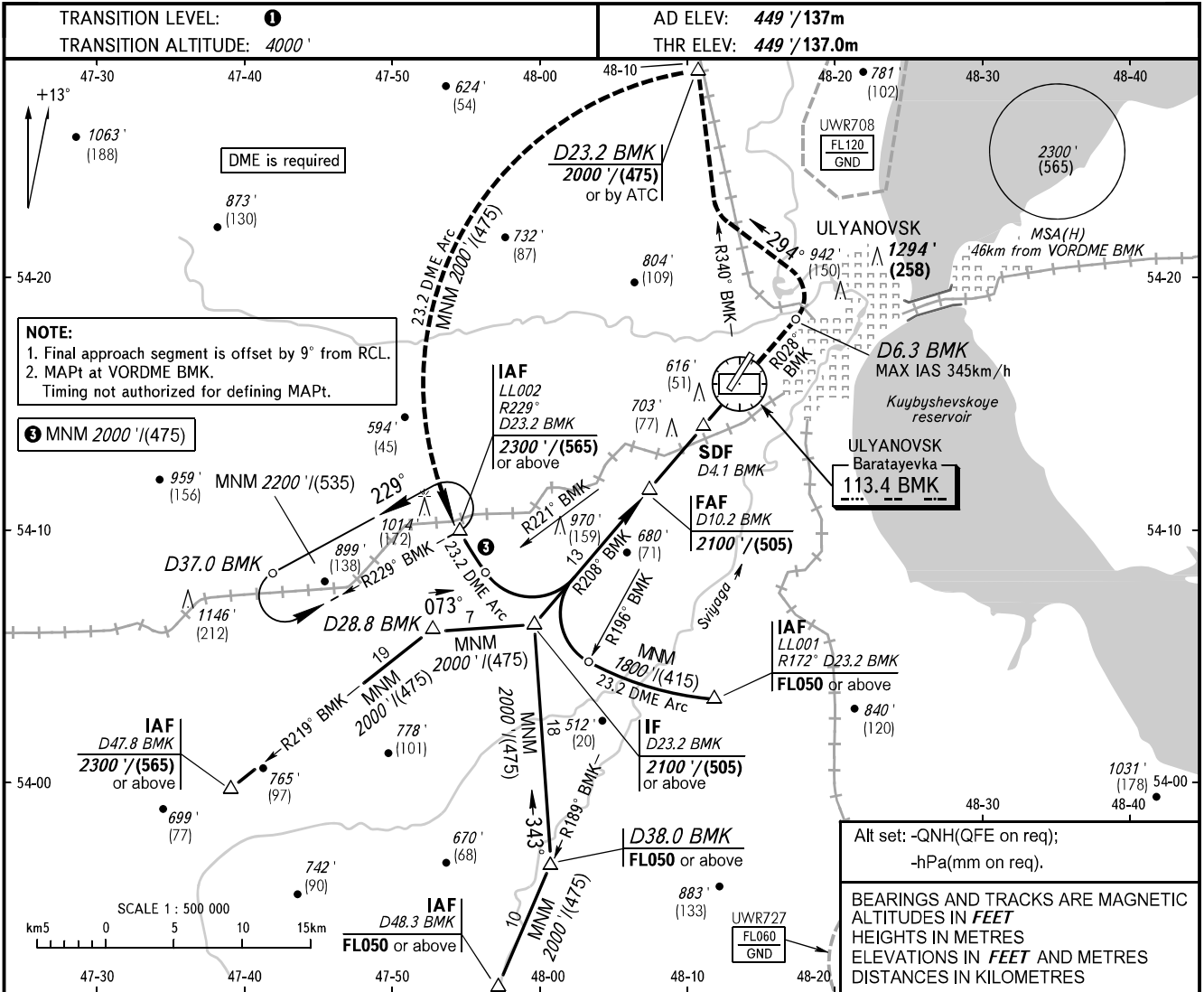


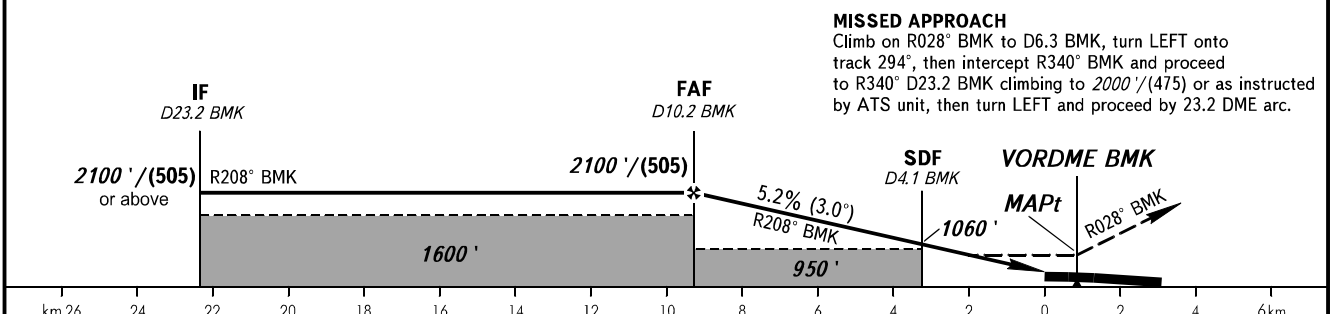
**INSTRUMENT
APPROACH
CHART - ICAO**

RADAR **120.800**
PRECISION **120.400**

**ULYANOVSK, RUSSIA
BARATAYEVKA
VOR RWY 02**



DME BMK	10.0	8.0	6.0	4.0
ALTITUDE	2080'	1740'	1400'	1050'



OCA(H)		A	B	C	D	1 TRANSITION LEVEL: - FL050 when QNH is 1013 hPa (760mm mercury column) or above; - FL060 when QNH is 977 hPa (733mm mercury column) or above, but less than 1013 hPa (760mm mercury column); - FL070 when QNH is less than 977 hPa (733mm mercury column). 2 Visual manoeuvring east of the AD is PROHIBITED.					
Straight-in	With SDF	840' (390')	840' (390')	860' (410')	880' (430')						
	Approach	950' (500')	950' (500')	950' (500')	950' (500')						
Circling		950' (500')	1010' (560')	1340' (890')	1340' (890')						
GROUND SPEED		km/h	150	180	210	240		270	300	330	360
RATE OF DESCENT		m/s	2.2	2.6	3.0	3.5	3.9	4.3	4.8	5.2	5.6
		ft/min	427	512	597	682	768	853	938	1024	1109

CHANGE: Heading, HGT