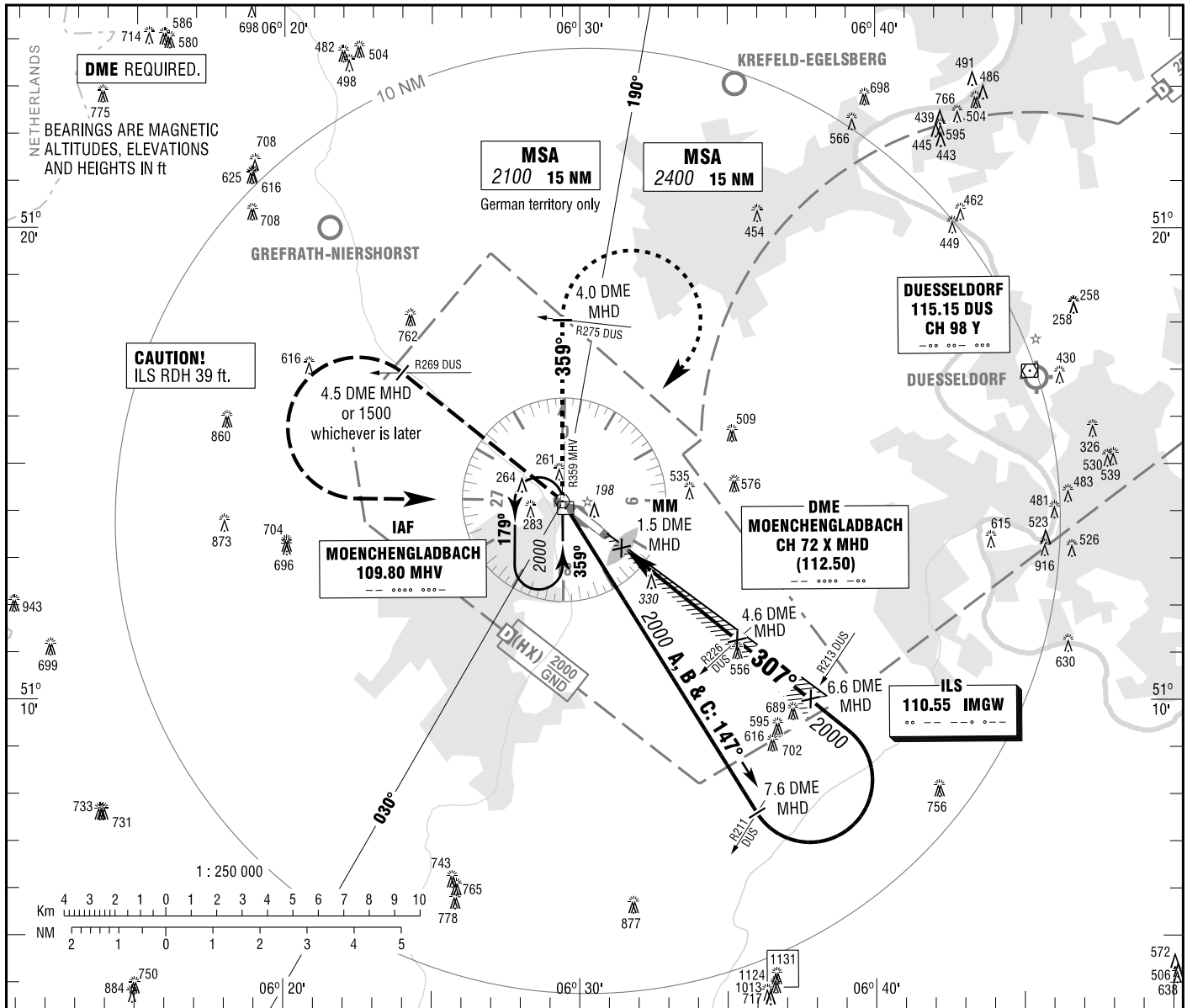


**MOENCHENGLADBACH**  
ILS or LOC  
RWY 31

MOENCHENGLADBACH ATIS	109.800 (MHV)	LANGEN RADAR	128.555
MOENCHENGLADBACH TOWER	120.455		121.355
MOENCHENGLADBACH GROUND	121.930		128.655

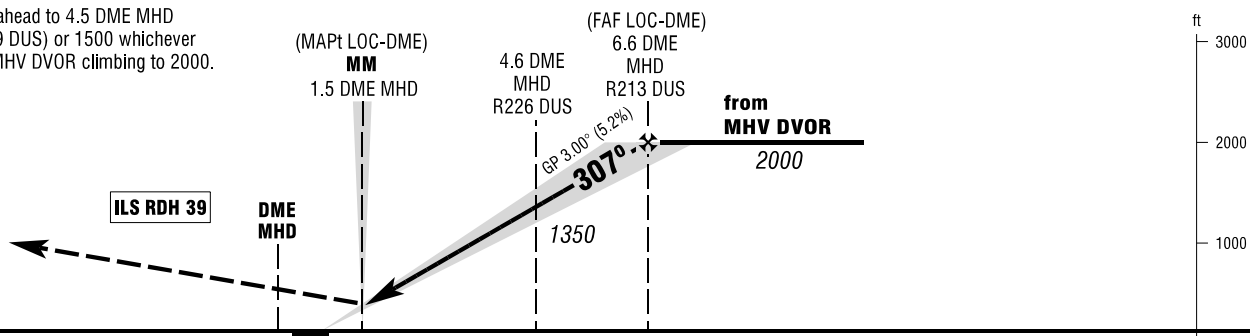
ELEV 125  
OCH RELATED TO VAR 1° E  
THR 31 ELEV 125

**INSTRUMENT**  
**APPROACH**  
**CHART - ICAO**



**MISSED APPROACH PROCEDURE**

Climb straight ahead to 4.5 DME MHD (crossing R269 DUS) or 1500 whichever is later; LT to MHV DVOR climbing to 2000.



NM 6 5 4 3 2 1 0 1 2 3 4 5 6 7 8 9 10 11 12 13 14 NM  
PROFILE SCALE 1 : 250 000

OCA (OCH)	<b>A</b>	<b>B</b>	<b>C</b>	
ILS-DME CAT I	348 (223)	358 (233)	368 (243)	
LOC-DME	580 (460)	580 (460)	580 (460)	

DME MHD	<b>3</b>	<b>4</b>	<b>5</b>	<b>6</b>		
DIST THR	2.1	3.1	4.1	5.1		
ALTITUDE	840	1160	1470	1790		

**LOC-DME:** Timing not authorized for defining the MAPt.

GS	kt	<b>80</b>	<b>100</b>	<b>120</b>	<b>140</b>	<b>160</b>
4.6 DME MHD - MAPt (3.1 NM)	MIN:SEC	2:20	1:52	1:33	1:20	1:10
Rate of descent (5.2%)	ft / MIN	420	530	640	740	850

Correction: ILS OCA(H) and MSA values, obstacles revised.