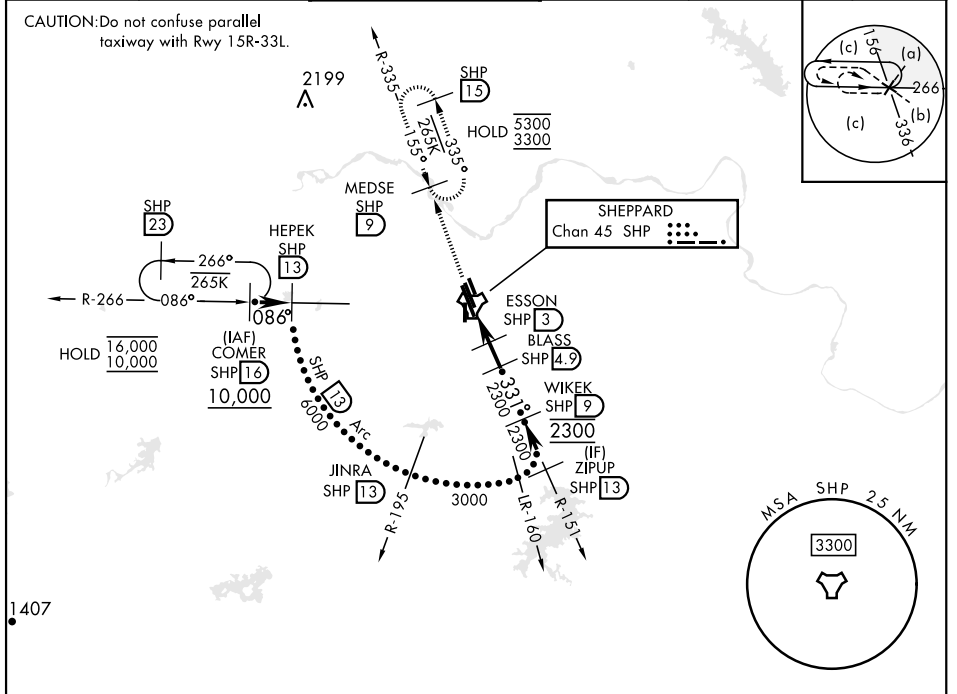


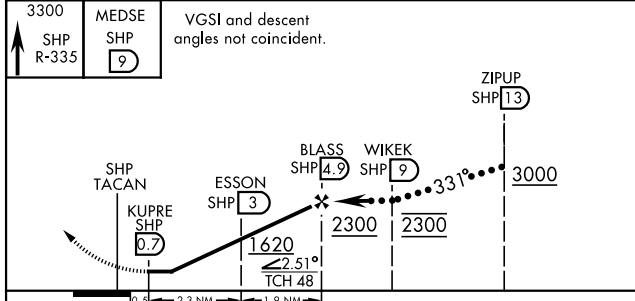
HI-TACAN RWY 33C

TACAN SHP Chan 45	APCH CRS 331°	Rwy ldg TDZE Arprt Elev 10,003 989 1019	[USAF]	SHEPPARD AFB/WICHITA FALLS MUNI (KSPS)
----------------------	------------------	--	--------	--

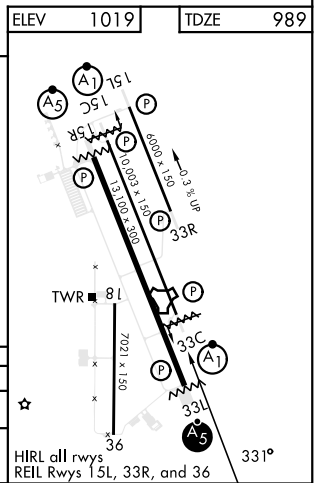
▼ * When ALS inop, increase CAT CDE vis to 1 mile. ** Circling not authorized W of Rwy 15R-33L.		ALSF-1 	MISSED APPROACH: Climb and maintain 3300, intercept SHP TACAN R-335 to SHP R-335/9 DME (MEDSE) and hold.		
ATIS *	APP CON	TOWER *	GND CON	CLNC DEL	ASR
132.05 269.9	118.2 269.025	119.75 0 279.525 (CTAF)	125.5 289.4	121.2 282.225	



EMERG SAFE ALT 100 NM 4600



CATEGORY	C	D	E
S-33C *	1340-5%	351 (400-%)	
CIRCLING **	1480-1½ 461 (500-1½)	2100-3	1081 (1100-3)



HI-TACAN RWY 33C

SC-2, 20 MAR 2025 to 17 APR 2025

SC-2, 20 MAR 2025 to 17 APR 2025