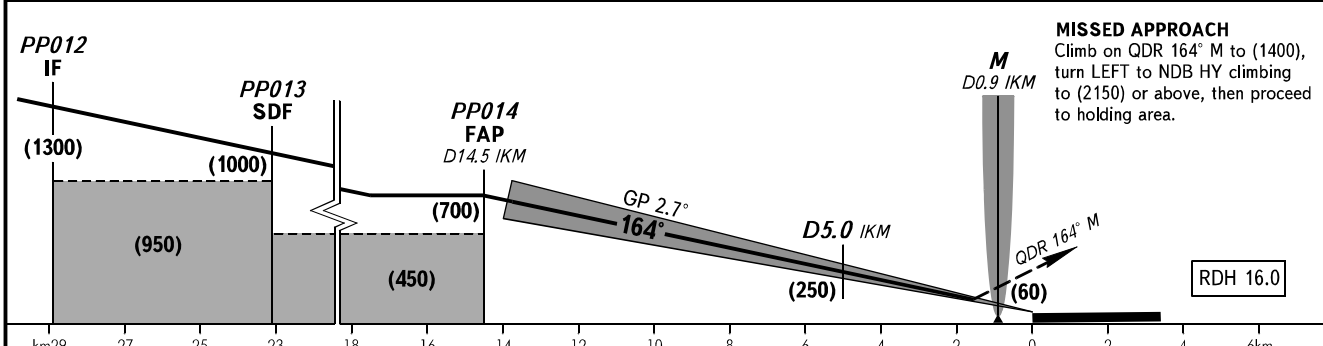
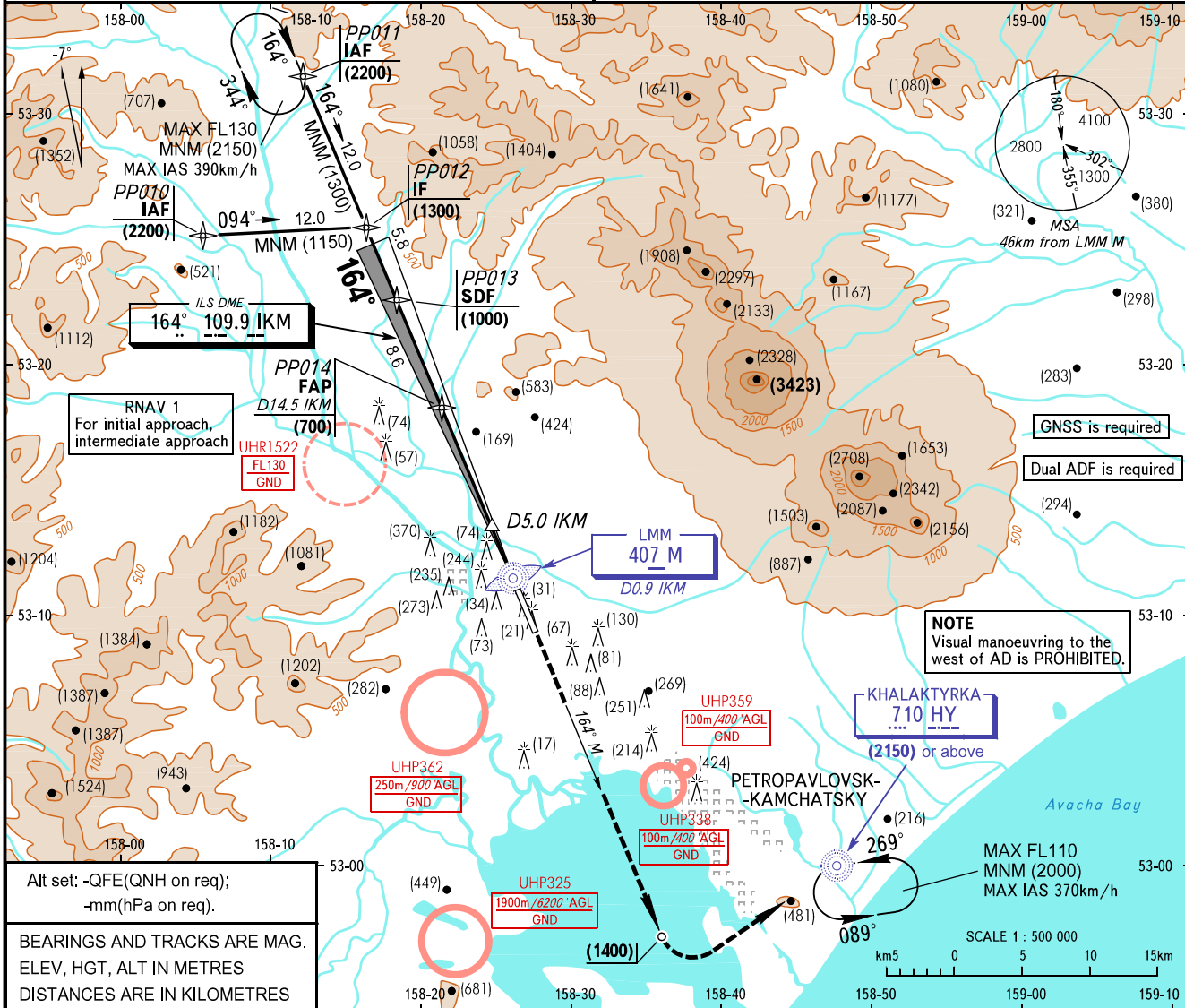


**INSTRUMENT
APPROACH
CHART - ICAO**

START **118.100**
RADAR **119.400**

**PETROPAVLOVSK-KAMCHATSKY, RUSSIA
YELIZOVO
ILS Y CAT I RWY 16R**

TRANSITION LEVEL: **1**
TRANSITION HEIGHT: **(2400)**
AD ELEV: **39m**
THR ELEV: **34.0m**



	A	B	C	D
OCA(H)				
Straight-in Approach	92(59)	95(62)	98(65)	101(68)
Circling	295(260)	345(310)	480(445)	555(520)
GROUND SPEED	km/h	150	180	210
RATE OF DESCENT	m/s	2.0	2.4	2.7

1 TRANSITION LEVEL:
- FL090 when QFE is 756mm mercury column or above;
- FL100 when QFE is 729mm mercury column or above, but less than 756mm mercury column;
- FL110 when QFE is less than 729mm mercury column.

240	270	300	330	360	390
3.1	3.5	3.9	4.3	4.7	5.1

CHANGE: UHP359, UHP362