

STANDARD DEPARTURE CHART-INSTRUMENT

RJCM / MEMANBETSU

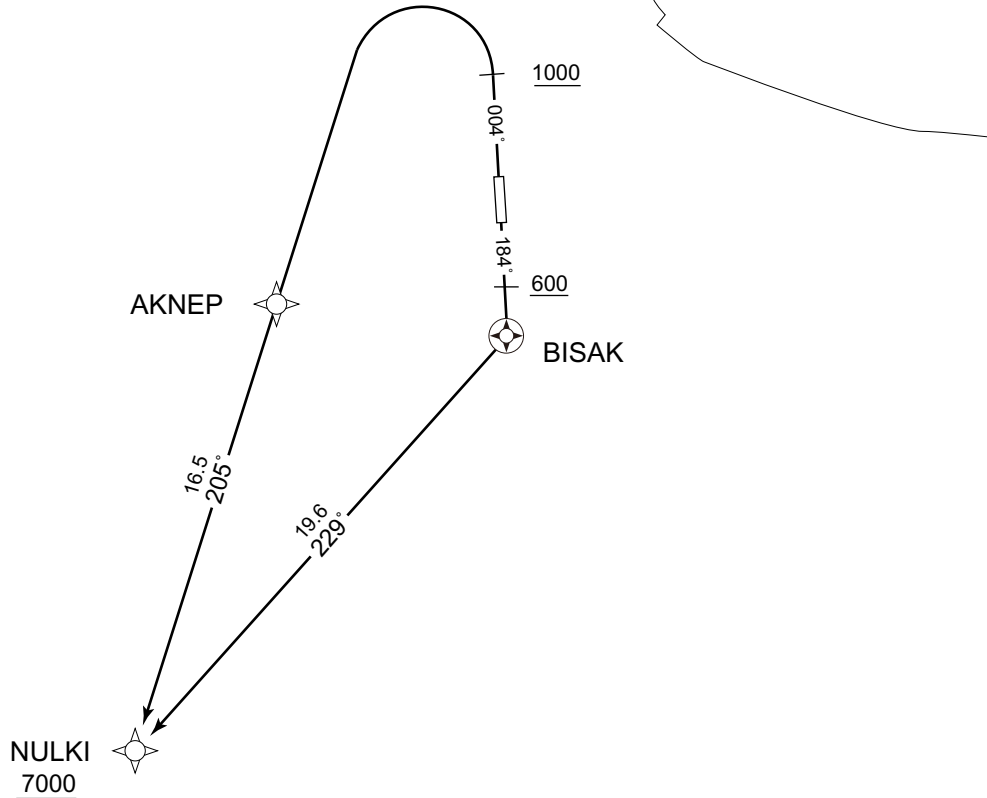
RNAV SID

NULKI ONE DEPARTURE

RNP1

Note GNSS required.

VAR 10° W



RWY18 : Climb on HDG184° at or above 600FT, direct to BISAQ, to NULKI at or above 7000FT.

RWY36 : Climb on HDG004° at or above 1000FT, turn left direct to AKNEP, to NULKI at or above 7000FT.

Note RWY36 : 3.9% climb gradient required up to 1500FT.

OBST ALT 1673FT located at 8.2NM 320° FM end of RWY36.

RWY18

Serial Number	Path Descriptor	Waypoint Identifier	Fly Over	Course °M(°T)	Magnetic Variation	Distance (NM)	Turn Direction	Altitude (FT)	Speed (KIAS)	Vertical Angle	Navigation Specification
001	VA	-	-	184 (174.7)	-9.6	-	-	+600	-	-	RNP1
002	DF	BISAQ	Y	-	-9.6	-	-	-	-	-	RNP1
003	TF	NULKI	-	229 (219.6)	-9.6	19.6	-	+7000	-	-	RNP1

RWY36

Serial Number	Path Descriptor	Waypoint Identifier	Fly Over	Course °M(°T)	Magnetic Variation	Distance (NM)	Turn Direction	Altitude (FT)	Speed (KIAS)	Vertical Angle	Navigation Specification
001	VA	-	-	004 (354.7)	-9.6	-	-	+1000	-	-	RNP1
002	DF	AKNEP	-	-	-9.6	-	L	-	-	-	RNP1
003	TF	NULKI	-	205 (194.9)	-9.6	16.5	-	+7000	-	-	RNP1

CHANGE : Description of latitude and longitude.

STANDARD DEPARTURE CHART-INSTRUMENT

RJCM / MEMANBETSU

RNAV SID

Waypoint Coordinates

Waypoint Identifier	Coordinates
BISAK	434808.9N / 1441026.9E
AKNEP	434859.1N / 1435906.4E
NULKI	433301.6N / 1435313.7E

CHANGE : Waypoint Coordinates added.