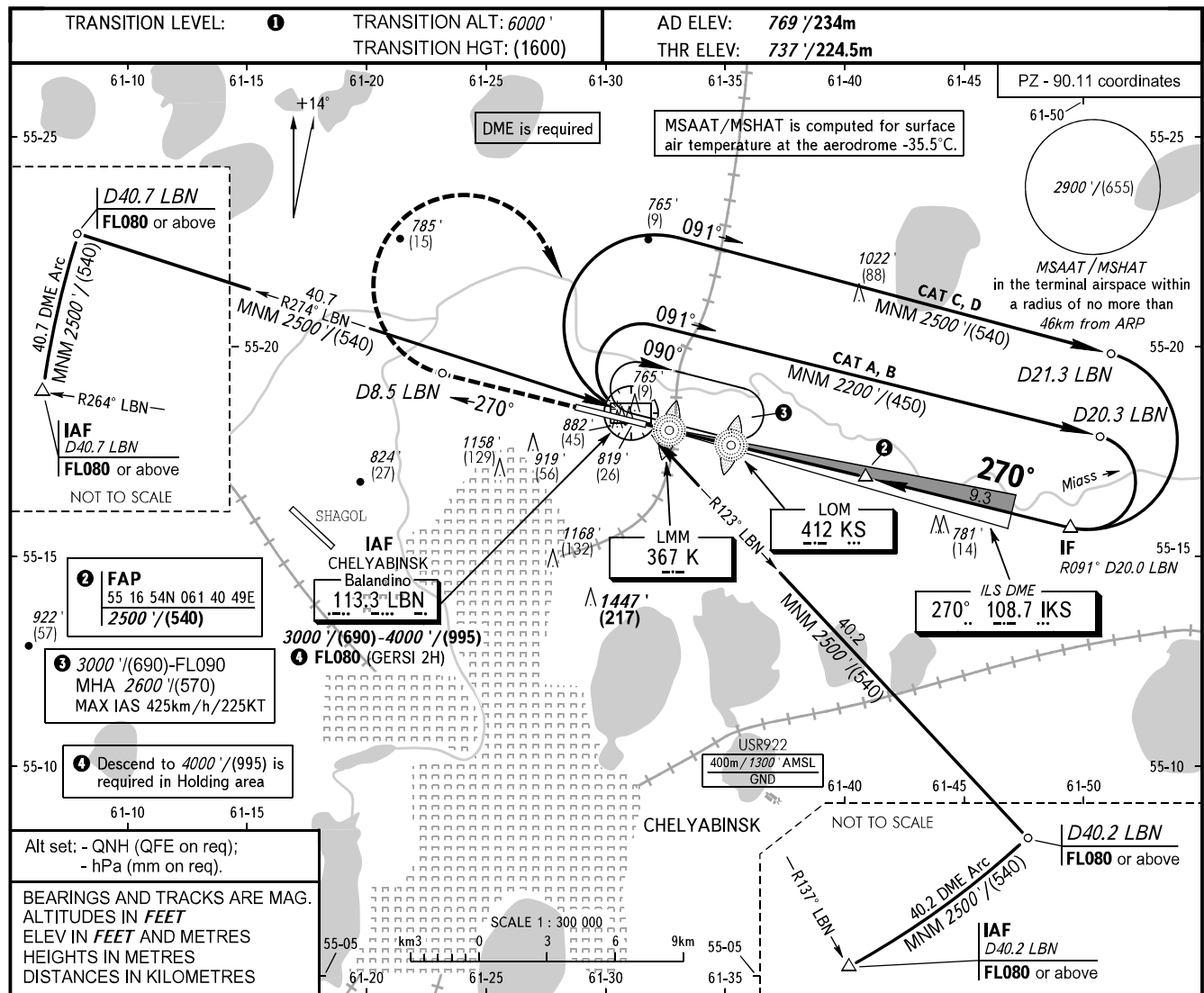


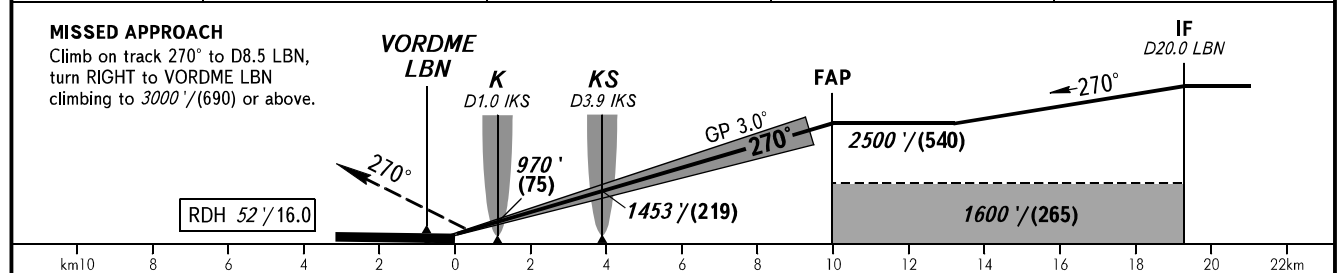
**INSTRUMENT
APPROACH
CHART - ICAO**

**CHEL YABINSK, RUSSIA
BALANDINO
ILS Y CAT I/II/III RWY 27**

RADAR **133.200**
START **125.200**



DME IKS	2.0	4.0	6.0	8.0
ALTITUDE/HEIGHT	1134'/(121)	1478'/(225)	1822'/(331)	2166'/(436)



OCA(H)		A	B	C	D					
Straight-in Approach	CAT I	937' (200') (61)	937' (200') (61)	937' (200') (61)	937' (200') (61)					
	CAT II	(100') (31)	(100') (31)	(100') (31)	(100') (31)					
	CAT IIIA	APPROVED								
Circling		1220' (450') (140)	1460' (690') (210)	1640' (870') (265)	1900' (1140') (345)					
GROUND SPEED	km/h		150	180	210	240	270	300	330	360
	kt		81	97	113	130	146	162	178	194
RATE OF DESCENT	m/s		2.2	2.6	3.0	3.5	3.9	4.3	4.8	5.2
	ft/min		427	512	597	682	768	853	938	1024

1 TRANSITION LEVEL:
- FL070 when QNH is 1013 hPa (760mm mercury column) or above;
- FL080 when QNH is 977 hPa (733mm mercury column) or above, but less than 1013 hPa (760mm mercury column);
- FL090 when QNH is less than 977 hPa (733mm mercury column).

WARNING
DME IKS reads zero at RWY 27 THR.