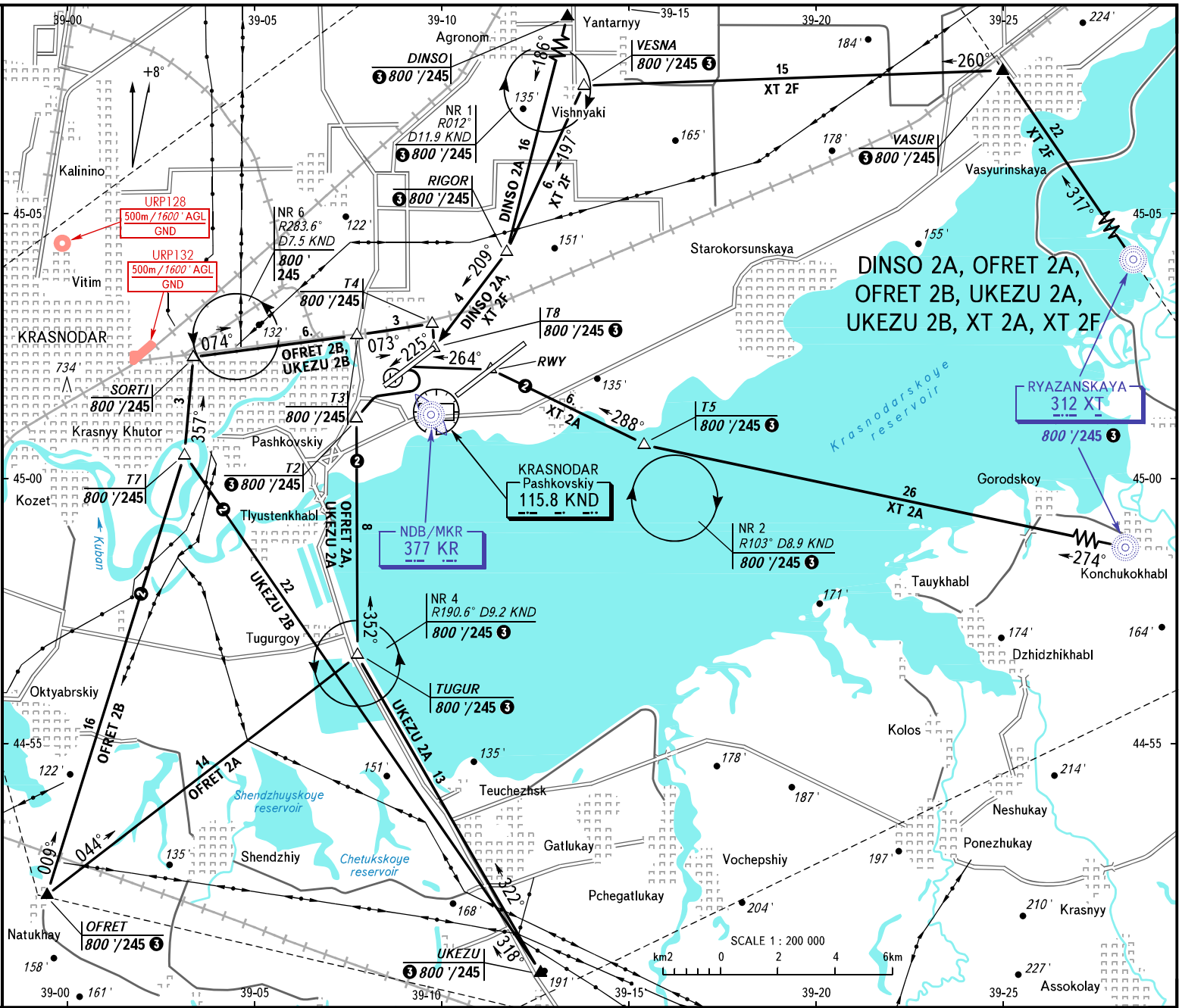


VFR
ARRIVAL
CHART

TRANSITION
ALTITUDE: 4000'

KRASNODAR, RUSSIA
PASHKOVSKIY
RWY 23R



AREA
RADAR
TOWER
130,300
121,300
118,200

BEARINGS AND TRACKS ARE MAGNETIC
ALTITUDES AND ELEVATIONS IN FEET
DISTANCES IN KILOMETRES

Alt set: -QNH(QFE on req.);
-hPa(mm on req).

- 1 TRANSITION LEVEL:
- FLO60 when QNH is 977 hPa (733mm mercury column) or above;
- FLO70 when QNH is 941 hPa (706mm mercury column) or above,
but less than 977 hPa (733mm mercury column).
 - 2 Cross RWY 23L take-off heading and centre by clearance
of "Krasnodar-Radar" controller on 121,300 MHz.
 - 3 1000' / 305 at NGT
- NOTE
OFRET 2B, UKEZU 2B are AVBL only in the day-time.