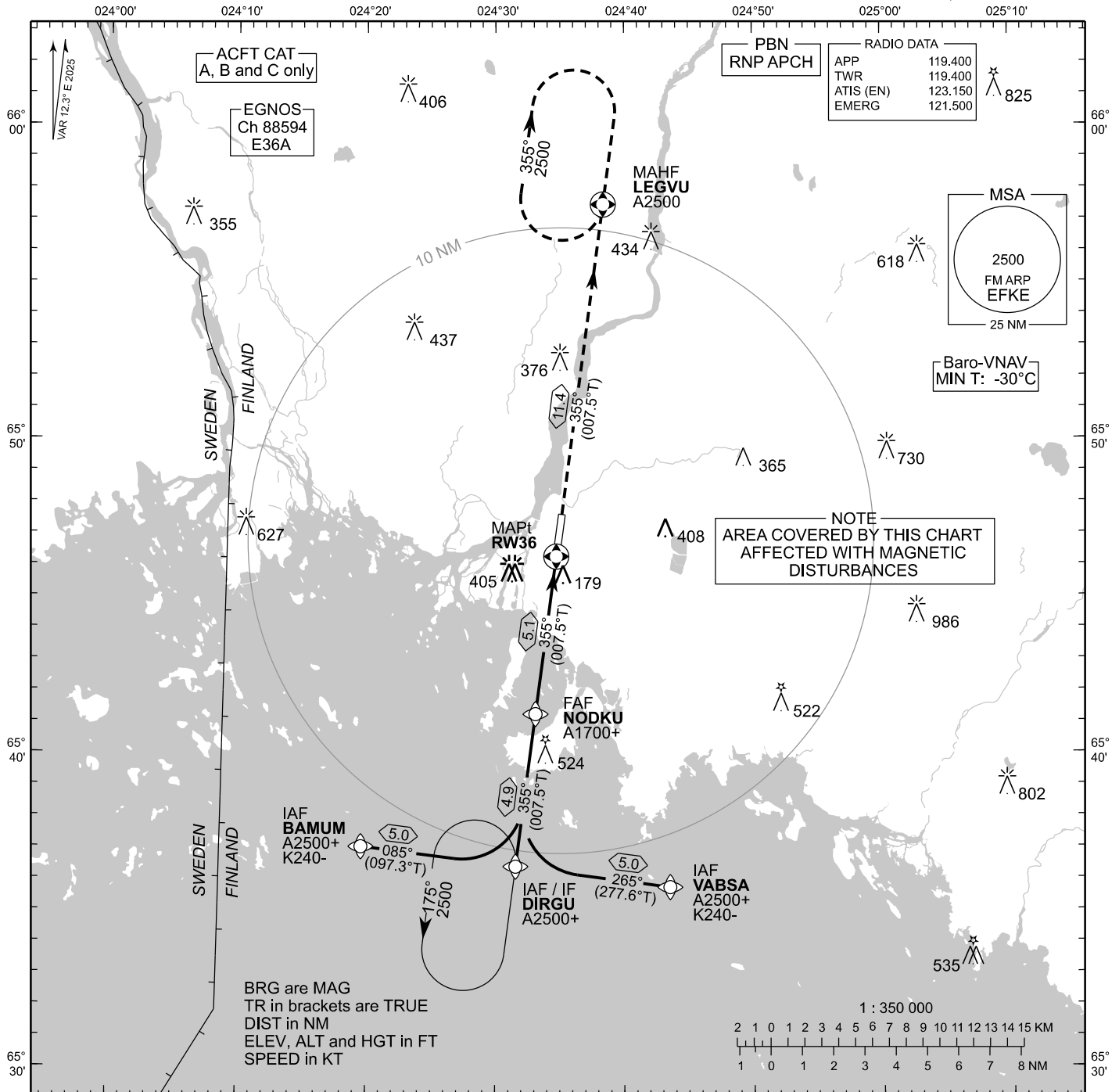


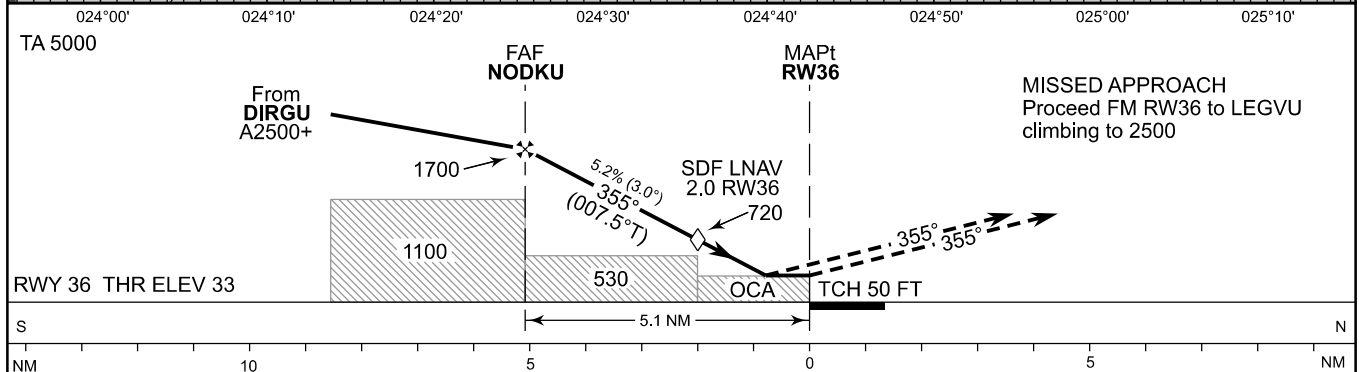
**INSTRUMENT  
APPROACH CHART - ICAO**

ELEV 62 FT  
HEIGHTS RELATED TO  
THR RWY 36 ELEV 33 FT

**RNP RWY 36  
KEMI-TORNIO AERODROME  
KEMI, FINLAND**



CHG: radio data



OCA (H)	A	B	C
LPV	276 (244)	288 (256)	296 (264)
LNAV/VNAV	306 (274)	319 (287)	327 (295)
LNAV	430 (400)		
Circling	710 (640)	710 (640)	810 (740)

DIST FM THR	5.0 NM	4.0 NM	3.0 NM	2.0 NM		
Altitude (Height)	1670 (1640)	1360 (1320)	1040 (1010)	720 (690)		
	kt	90	100	120	140	160
FAF - MAPt 5.1 NM	min:sec	3:23	3:03	2:32	2:11	1:54
Rate of descent	ft/min	480	530	640	740	850

Timing not authorized for defining the MAPt

EFKE RNP RWY 36										
PROC ID NAV SPEC	SEQ NR	P/T	WPT			MAG	GEO TR	DIST NM	Constraints	
			ID	Type	Flyover				LVL	Speed
H36 BAMUM RNP APCH	005	IF	BAMUM	IAF	-	085°	097.3°T	5.0	A2500+	K240-
	010	TF	DIRGU	IF	-				A2500+	
	020	TF	NODKU	FAF	-	355°	007.5°T	4.9	A1700+	
	030	TF	RW36	MAPt	Y	355°	007.5°T	5.1		
	040	TF	LEGVU	MAHF	Y	355°	007.5°T	11.4	A2500	

EFKE RNP RWY 36										
PROC ID NAV SPEC	SEQ NR	P/T	WPT			MAG	GEO TR	DIST NM	Constraints	
			ID	Type	Flyover				LVL	Speed
H36 DIRGU RNP APCH	010	IF	DIRGU	IAF/IF	-	355°	007.5°T	4.9	A2500+	
	020	TF	NODKU	FAF	-				A1700+	
	030	TF	RW36	MAPt	Y	355°	007.5°T	5.1		
	040	TF	LEGVU	MAHF	Y	355°	007.5°T	11.4	A2500	

EFKE RNP RWY 36										
PROC ID NAV SPEC	SEQ NR	P/T	WPT			MAG	GEO TR	DIST NM	Constraints	
			ID	Type	Flyover				LVL	Speed
H36 VABSA RNP APCH	005	IF	VABSA	IAF	-	265°	277.6°T	5.0	A2500+	K240-
	010	TF	DIRGU	IF	-				A2500+	
	020	TF	NODKU	FAF	-	355°	007.5°T	4.9	A1700+	
	030	TF	RW36	MAPt	Y	355°	007.5°T	5.1		
	040	TF	LEGVU	MAHF	Y	355°	007.5°T	11.4	A2500	

RNAV Holdings							
ID	INBD TR	INBD MAG	Turn Direction	Speed	MNM HLDG LVL	TIME	DIST NM
DIRGU	007.5°T	355°	Left	K230-	A2500	1 MIN	-
LEGVU	187.5°T	175°	Right	K230-	A2500	1 MIN	-

WPT COORD
SEE PAGE EFKE AD 2.15 - 1

FINAL APPROACH PARAMETERS			
LNAV Gradient	Baro-VNAV		TCH
	VPA	MNM T	
5.24 % (3.00°)	3.00°	-30°C	50 FT

SBAS DATA	
Approach ID	E36A
Service Provider	EGNOS
CRC remainder	79 F8 96 D3
Channel number	88594
Data Block	SEE EFKE AD 2.15 - 3