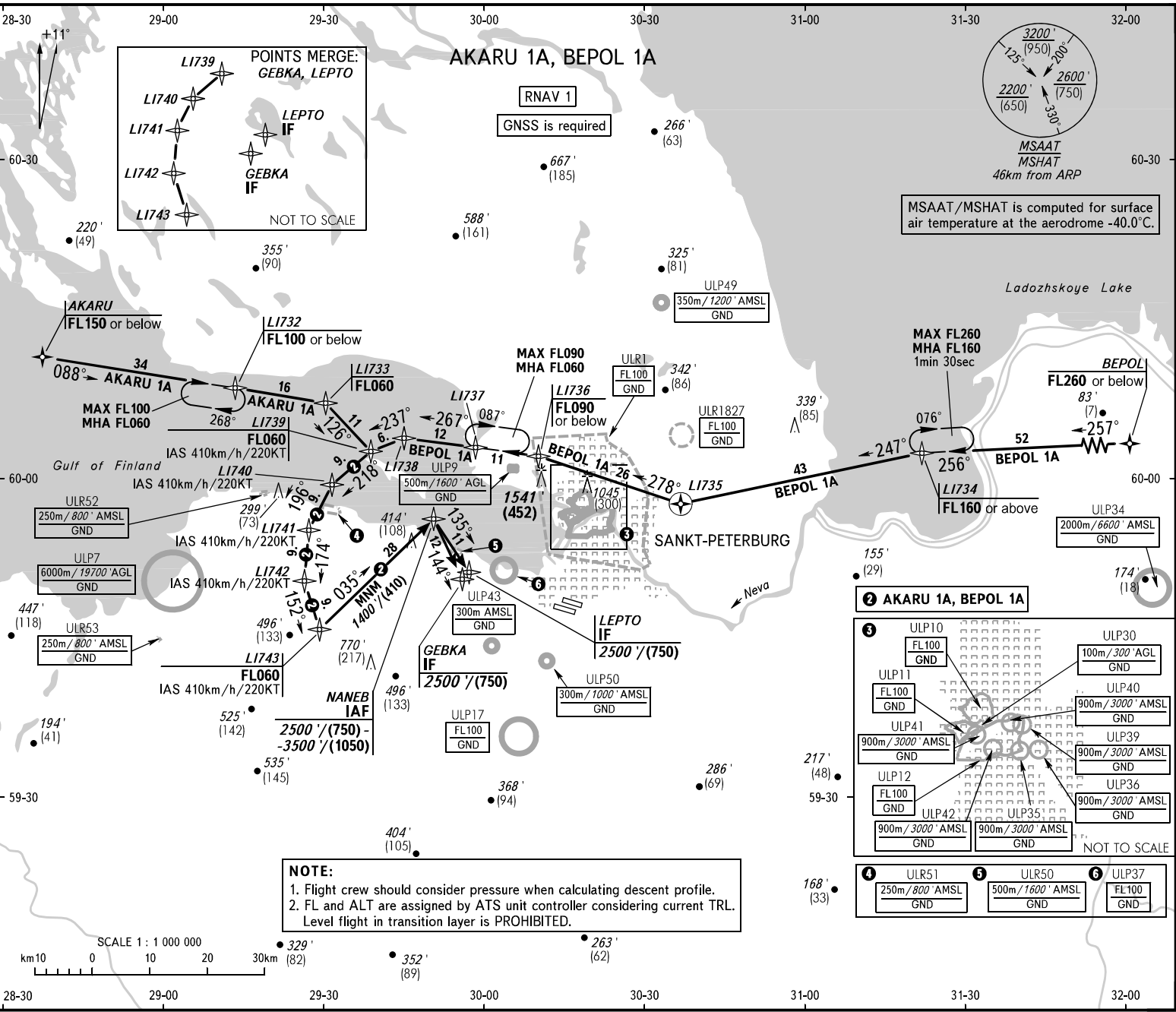


STANDARD ARRIVAL CHART
INSTRUMENT (STAR) - ICAO

TRANSITION
LEVEL: 1

SANKT-PETERBURG, RUSSIA
PULKOVO
RNAV RWY 10R, 10L



CHANGE: ULP49, ULP50

Federal Air Transport Agency

AIRAC AMDT 13/23

APPROACH Sector 1 (EAST) H24
Sector 2 (WEST) 0600-1600
Sector 2 (WEST) 1600-0600

RADAR H24
TOWER H24
RMY 10L/28R H24
RMY 10R/28L H24

BEARINGS AND TRACKS ARE MAGNETIC
ALTITUDES IN FEET
HEIGHTS IN METRES
ELEVATIONS IN FEET
DISTANCES IN KILOMETRES

Alt set: QNH/QFE on req.)
-hPa(mm on req.)

NOTE:
1. Descent shall be carried out only by ATS unit instruction.
2. The flight crews shall advise ATS unit if unable to adhere to altitude (flight level) or speed restrictions.

TRANSITION LEVEL:
- FLO50 when ONH is 996 hPa (747mm mercury column) or above;
- FLO60 when ONH is 960 hPa (720mm mercury column) or above, but less than 996 hPa (747mm mercury column);
- FLO70 when ONH is less than 960 hPa (720mm mercury column).