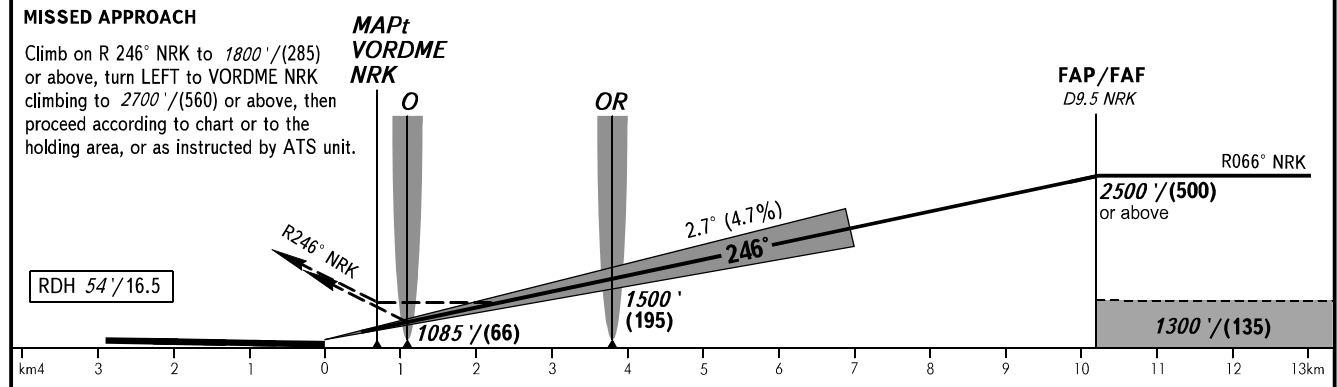
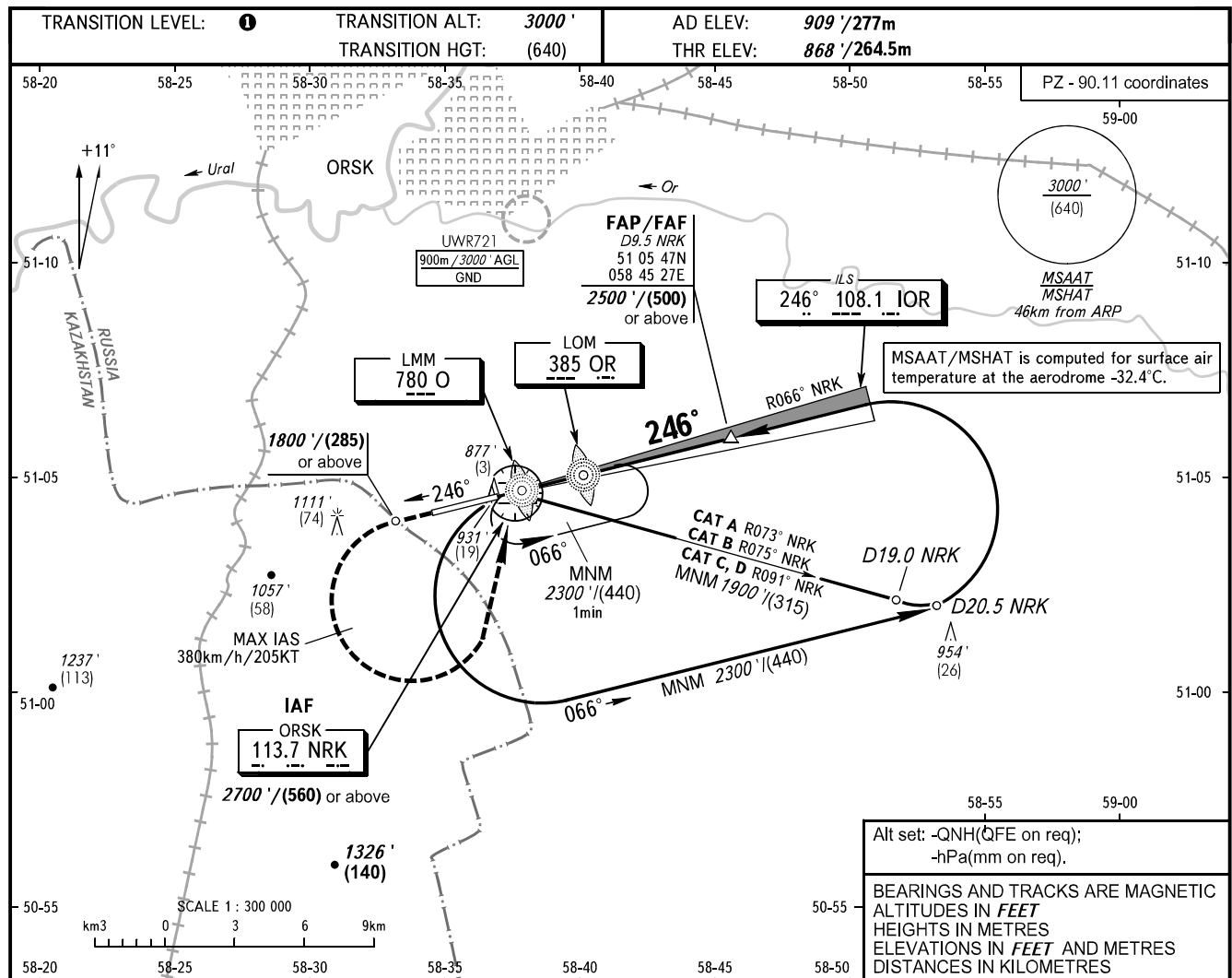


**INSTRUMENT
APPROACH
CHART - ICAO**

ORSK, RUSSIA
ORSK
ILS Y, LOC Y RWY 25

TOWER 122.700



OCA(H)		A	B	C	D	① TRANSITION LEVEL: - FL040 when QNH is 1013 hPa (760mm mercury column) or above; - FL050 when QNH is 977 hPa (733mm mercury column) or above, but less than 1013 hPa (760mm mercury column); - FL060 when QNH is less than 977 hPa (733mm mercury column).									
Straight-in Approach	CAT I	1061' (193') (59)	1073' (205') (62)	1081' (213') (65)	1091' (223') (68)	NOTE: 1. MAPt at VORDME NRK. Timing not authorized for defining MAPt. 2. Turn before passing MAPt is PROHIBITED.									
	LOC	1130' (260') (80)	1130' (260') (80)	1130' (260') (80)	1130' (260') (80)										
Circling		1310' (400') (125)	1410' (500') (155)	1630' (720') (220)	1660' (750') (230)										
GROUND SPEED		km/h	150	180	210	240	270	300	330	360	390	420	450		
RATE OF DESCENT		m/s	2.0	2.4	2.7	3.1	3.5	3.9	4.3	4.7	5.1	5.5	5.9		
		ft/min	385	463	540	617	694	771	848	925	1002	1079	1156		