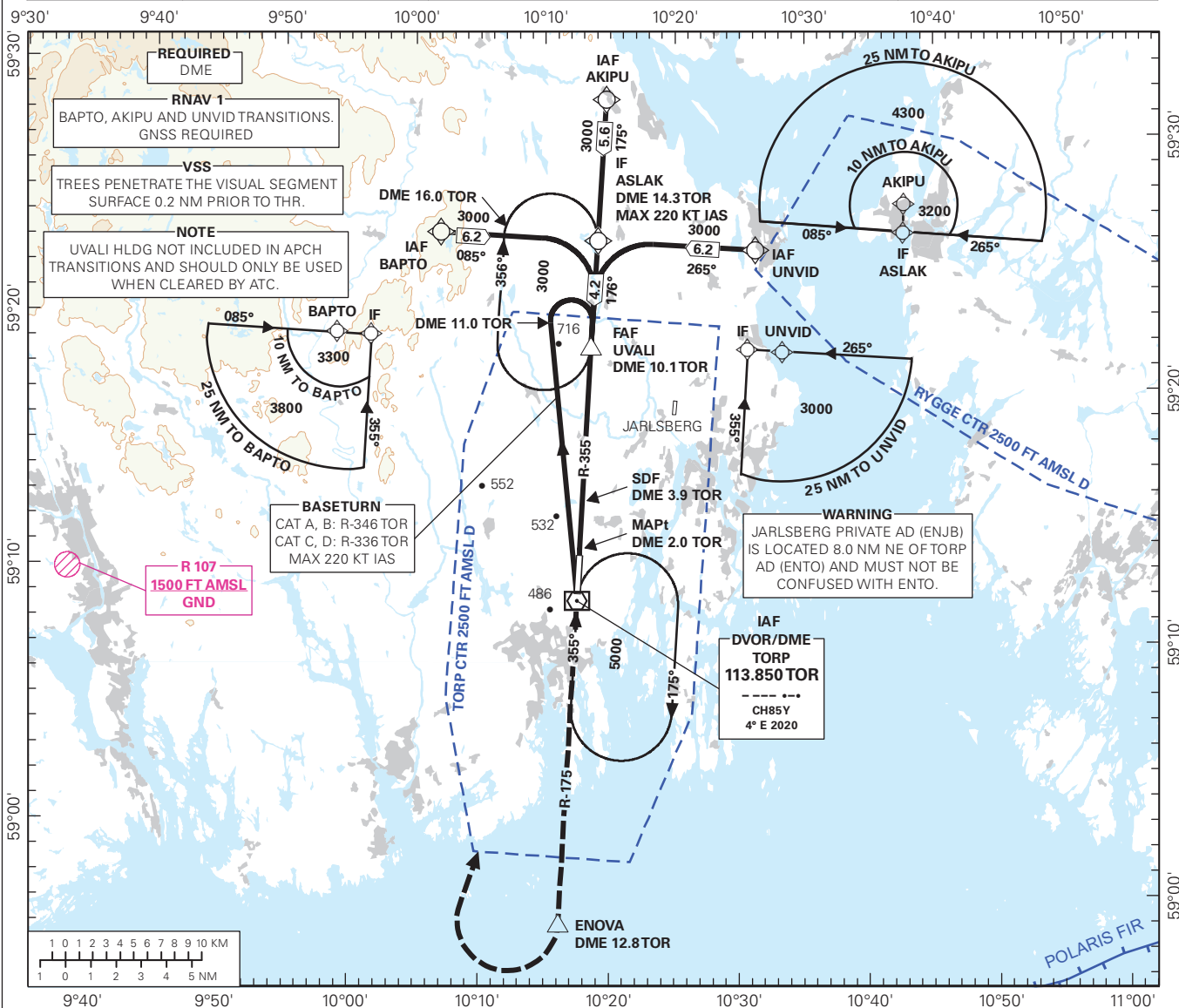
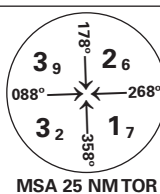


**INSTRUMENT APPROACH CHART - ICAO PLAN VIEW SCALE: 1:500 000**

**SANDEFJORD  
TORP  
VOR RWY 18  
TRANSITION ALTITUDE  
7000**

<b>ATIS:</b> 119.080	<b>AD ELEV:</b> 286	
<b>APP FARRIS:</b> 134.055 124.355	<b>THR ELEV:</b> 282	<b>DIST IN NM</b>
<b>TWR:</b> 118.655	<b>HGT RELATED TO THR RWY 18</b>	<b>ELEV, ALT AND HGT IN FT</b>
<b>GND:</b> 126.180	<b>CIRCLING HGT RELATED TO AD ELEV</b>	
<b>BEARINGS ARE MAGNETIC - VAR 4° E (2020)</b>		



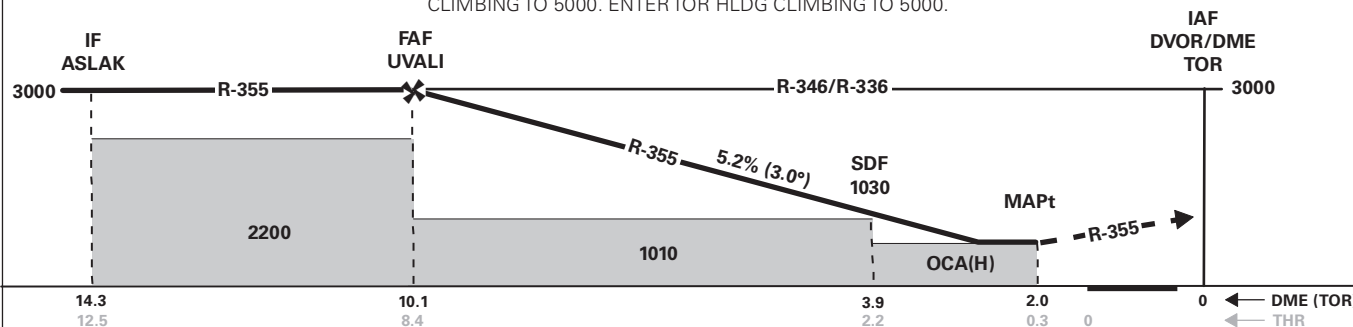
DIST TO TOR	11	10	9	8	7	6	5	4
ALT (HGT)	-	2970 (2688)	2650 (2368)	2340 (2058)	2020 (1738)	1700 (1418)	1380 (1088)	1060 (778)

**MISSED APCH:**

CLIMB ON R-355 TO TOR. FM TOR PROCEED ON R-175 TO ENOVA CLIMBING TO 3000. AFTER ENOVA, TURN RIGHT DCT TOR CLIMBING TO 5000. ENTER TOR HLDG CLIMBING TO 5000.

**NOTE:**

MAX 210 KT IAS. EXPECT VECTORING.



<b>CAT OF ACFT</b>	A	B	C	D
<b>OCA(H) STRAIGHT - IN</b>	-	-	-	-
<b>CIRCLING</b>	840 (554)	880 (594)	980 (694)	1000 (714)

**NOTE:**

CHANGES: FREQUENCIES.