

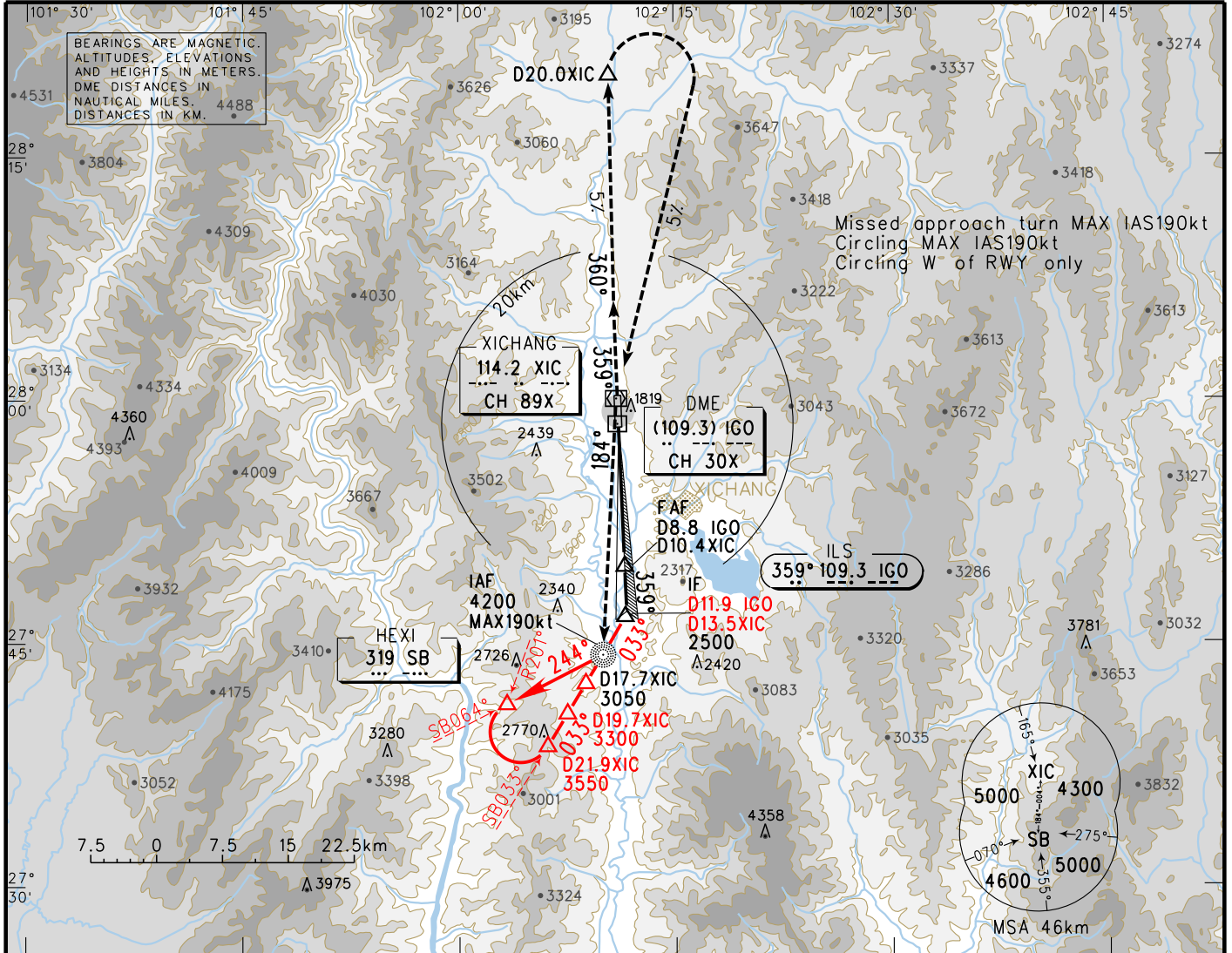
INSTRUMENT APPROACH CHART-ICAO

VAR 1.2° W
 AERODROME ELEV 1559.2
 THR RWY 36 ELEV 1546.5

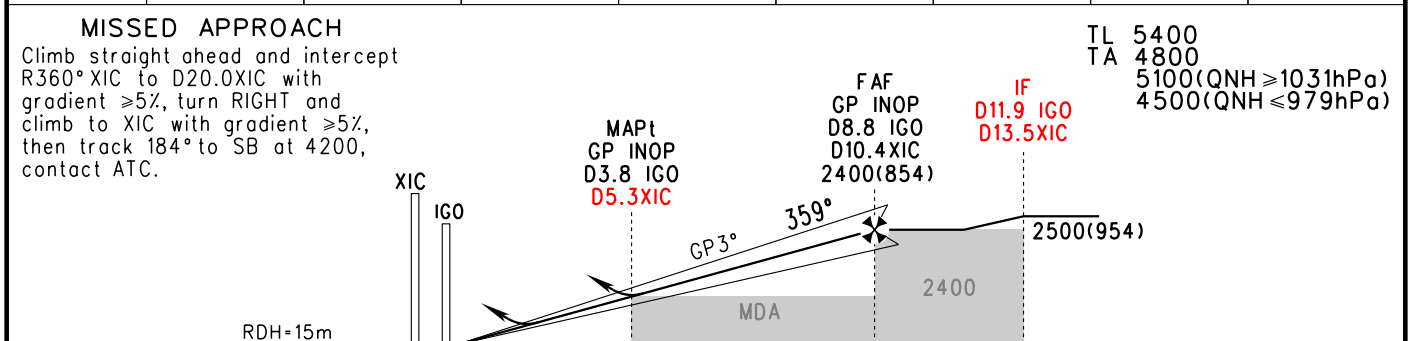
ATIS 127.4
 TWR 118.2 (130.0)

ZUXC XICHANG/Qingshan

ILS/DME RWY 36



GP INOP	DME (IGO) (NM)	4	5	6	7	8	9	10
	ALT (m)	1930	2028	2125	2222	2319		



ILS/DME	DA(H)	1687(140)		1697(150)	
	RVR/VIS	1800/1800		2000/2000	
GP INOP	MDA(H)	1910(364)			
	VIS	5000			
CIRCLING	MDA(H)	2120(561)	2295(736)	2630(1071)	
	VIS	5000	5000	5000	

FAF-MAPt(GP INOP) 9.3km						
GS in kt	80	100	120	140	160	180
km/h	150	185	220	260	295	335
Time min:sec	3:43	3:01	2:32	2:09	1:53	1:40
Rate of descent m/s	2.2	2.7	3.2	3.8	4.3	4.9

Changes: Procedure.