

CLOVIS, NEW MEXICO

ILS or LOC RWY 22

LOC I-CVS 109.7	APCH CRS 218°	Rwy Idg 10,003 TDZE 4295 Arprt Elev 4295	AL-512 [USAF]	CANNON AFB (KCVS)
---------------------------	-------------------------	---	---------------	-------------------

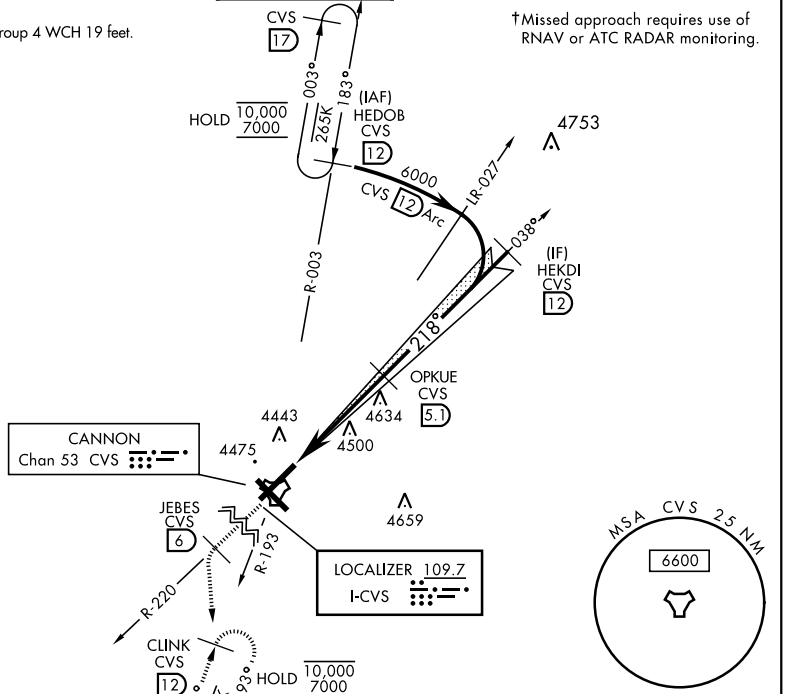
* When ALS inop, increase RVR to 40 and vis to 3/4 miles.
 ** When ALS inop, increase CAT AB RVR to 55 and vis to 1 mile, CAT CDE vis to 1 1/4 miles.

† MISSED APPROACH: Climb to 6000 out CVS TACAN R-220 to 6 DME (JEBES) then turn left climbing to 7000 intercept CVS R-193 to 12 DME (CLINK) and hold.

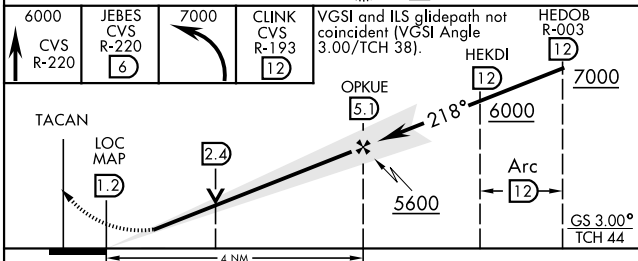
ATIS 119.1 269.9	CANNON APP CON 118.425 352.1	CANNON TOWER 120.4 270.25	GND CON 121.9 275.8	CLNC DEL 120.2 293.225
----------------------------	--	-------------------------------------	-------------------------------	----------------------------------

CAUTION: 1. ILS Rwy 22 Height Group 4 WCH 19 feet.

† Missed approach requires use of RNAV or ATC RADAR monitoring.



EMERG SAFE ALT 100 NM 8000



ELEV 4295	TDZE 4295
HIRL all rwys	
FAF to MAP 4 NM	
Knots	60 90 120 150 180
Min:Sec	4:00 2:40 2:00 1:36 1:20

CLOVIS, NEW MEXICO 34°23'N-103°19'W CANNON AFB (KCVS)

Amdt 4 13AUG20

ILS or LOC RWY 22

SW-1, 20 MAR 2025 to 17 APR 2025

SW-1, 20 MAR 2025 to 17 APR 2025